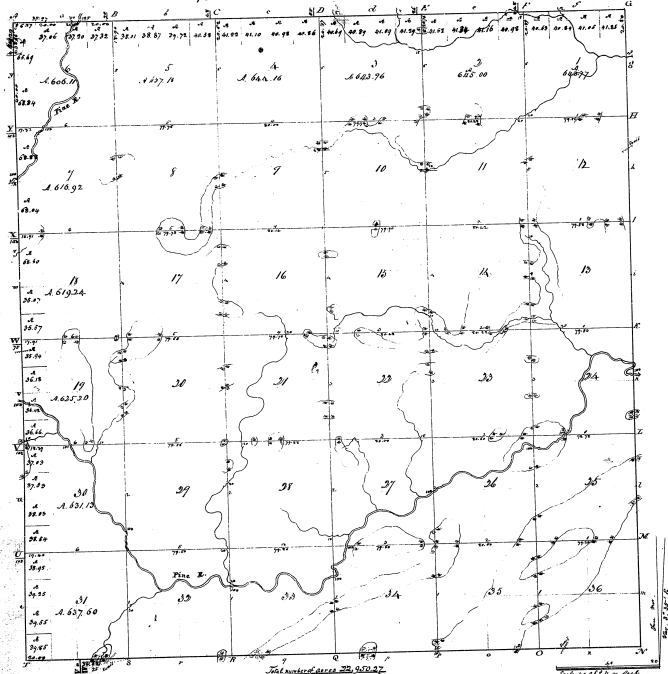


Township N^o XLV. Range N^o IV. Mer. (McC. Ter.)

13-37

13-37



Long Run	by old survey of land	Sec. 1, 2, 3, 4, 5, 6, 7, 8, 9, 10, 11, 12, 13, 14, 15, 16, 17, 18, 19, 20, 21, 22, 23, 24, 25, 26, 27, 28, 29, 30, 31, 32, 33, 34, 35, 36	to the S. E. corner of Sec. 1	to the S. E. corner of Sec. 1
James Davidson	to the S. E. corner of Sec. 1	to the S. E. corner of Sec. 1	to the S. E. corner of Sec. 1	to the S. E. corner of Sec. 1
James Davidson	to the S. E. corner of Sec. 1	to the S. E. corner of Sec. 1	to the S. E. corner of Sec. 1	to the S. E. corner of Sec. 1
James Davidson	to the S. E. corner of Sec. 1	to the S. E. corner of Sec. 1	to the S. E. corner of Sec. 1	to the S. E. corner of Sec. 1

The above Map of Township N^o XLV North, in Range N^o IV West of the Principal Meridian, in the Territory of Michigan, is a true and correct copy of the original map, which has been examined and approved by the Survey General of Michigan, J. H. Williams, on the 17th day of June, 1838.

J. H. Williams
Survey General