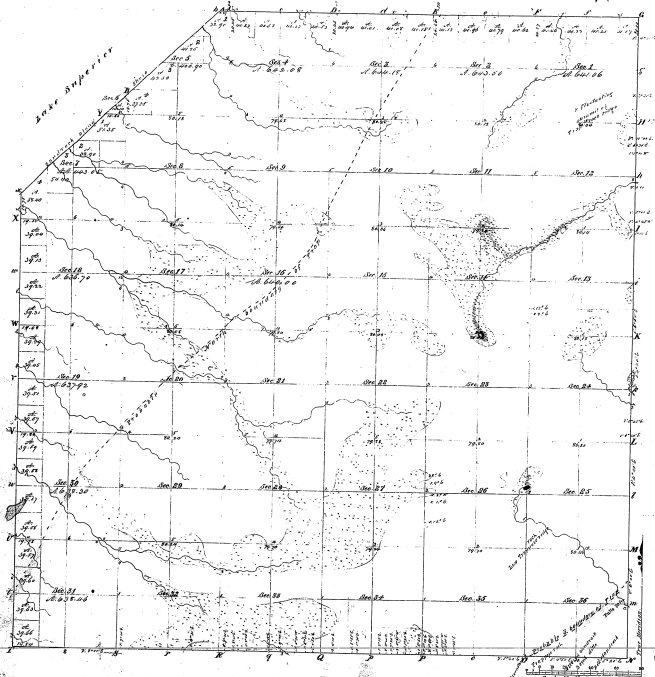


Township N^o 56 N. Range N^o 53 W. Mer. Mich.

140 38

40-38



Detailed of Same as before					
Part	Section	Area	Value	Price	Amount
W ^o	128	1.74			
Y	129	1.74			
Z	130	1.74			
AA	131	1.74			
BB	132	1.74			
CC	133	1.74			
DD	134	1.74			
EE	135	1.74			
FF	136	1.74			
GG	137	1.74			
HH	138	1.74			
II	139	1.74			
JJ	140	1.74			
KK	141	1.74			
LL	142	1.74			
MM	143	1.74			
NN	144	1.74			
OO	145	1.74			
PP	146	1.74			
QQ	147	1.74			
RR	148	1.74			
SS	149	1.74			
TT	150	1.74			
UU	151	1.74			
VV	152	1.74			
WW	153	1.74			
XX	154	1.74			
YY	155	1.74			
ZZ	156	1.74			
AAA	157	1.74			
BBB	158	1.74			
CCC	159	1.74			
DDD	160	1.74			
EEE	161	1.74			
FFF	162	1.74			
GGG	163	1.74			
HHH	164	1.74			
III	165	1.74			
JJJ	166	1.74			
KKK	167	1.74			
LLL	168	1.74			
MMM	169	1.74			
NNN	170	1.74			
OOO	171	1.74			
PPP	172	1.74			
QQQ	173	1.74			
RRR	174	1.74			
SSS	175	1.74			
TTT	176	1.74			
UUU	177	1.74			
VVV	178	1.74			
WWW	179	1.74			
XXX	180	1.74			
YYY	181	1.74			
ZZZ	182	1.74			
AAA	183	1.74			
BBB	184	1.74			
CCC	185	1.74			
DDD	186	1.74			
EEE	187	1.74			
FFF	188	1.74			
GGG	189	1.74			
HHH	190	1.74			
III	191	1.74			
JJJ	192	1.74			
KKK	193	1.74			
LLL	194	1.74			
MMM	195	1.74			
NNN	196	1.74			
OOO	197	1.74			
PPP	198	1.74			
QQQ	199	1.74			
RRR	200	1.74			

Survey Disposed	When Surveyed	Date of Contract	Total number of Acres 21076.55			
			Original of Township	When Surveyed	When Disposed of	Not Surveyed
Township Cont.	W. A. Wood	June 5, 1866	21,076.55	5,000.00	16,076.55	
Subdivisions	W. A. Wood	June 5, 1866	21,076.55	5,000.00	16,076.55	

The above, Map of Township N^o 56, south of Range N^o 53 east of the Principal Meridian, Michigan, is a copy of the survey filed on file in this office, which has been examined and approved by the Survey General's Office.

Witness my hand and seal, this 8th day of May, 1866.

Lucius Lyon, Sur^g Genl