

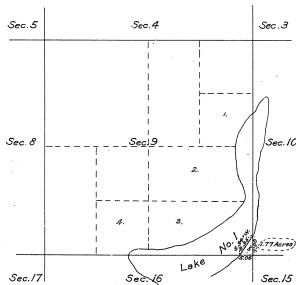


SUPPLEMENTAL PLAT  
of section 9, T. 24 N., R. 5 E., P.M.,  
MICHIGAN.

Scale: 20 chains to an inch.

22-95

22-25-2



Department of the Interior,  
General Land Office,  
Washington, D.C., July 1, 1945.  
This supplemental plat of sec. 9, T. 24 N., R. 5 E., P.M., Michigan,  
is made for the purpose of designating in legal terms the fractional  
SE $\frac{1}{4}$  SE $\frac{1}{4}$  SE $\frac{1}{4}$  of said section, shown on plat approved February  
16, 1945, without legal description, and is hereby approved.

  
Commissioner and ex officio  
U.S. Surveyor General for Michigan.

Supplemental Plat

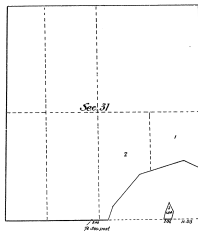
of

Lot 3, Sec. 31, T. 24 N., R. 5 E., Michigan Mer.

MICHIGAN

Scale 20 chs. to an inch.

22-25  
2013



Note - see field notes for position of N. or  
put and for distance 200

00000

Department of the Interior,  
General Land Office,  
Washington, D.C., Dec. 31, 1907.

I hereby certify that the above is a plat of the subdivisions made in accordance with Section 2219 U.S. Revised Statutes, viz.: Lot 3, Sec. 31, T. 24 N., R. 5 E., Michigan Mer., Michigan, and is strictly conformable to the field notes of survey on file in this office.

R. A. Beecher  
Commissioner of Ex. Office  
U.S. Surveyor General for Michigan