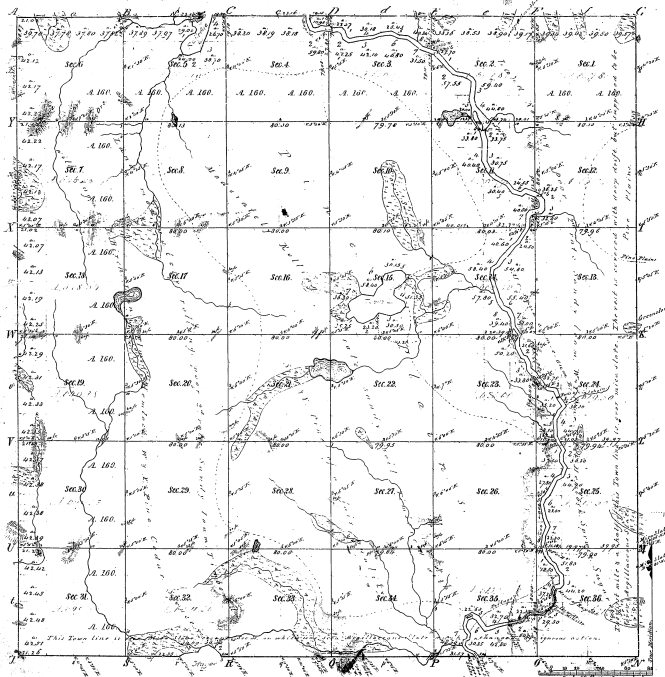


Township N^o 42 N. Range N^o 32 W. Mer. Mich.



Boundaries of			
Publ. Course 1816	Publ. Course 1818	Publ. Course 1820	Publ. Course 1822
44-31			
22 30 32			

44-31

Sections Designated	By Whom Surveyed	Date of Survey	Total number of Acres		When Surveyed	When Sec. and 1/4 Sec. Cont. 1/4 Sec.
			Acres	1/4 Sec.		
Township 42 N.	J. & C. B. Smith	1841 - 1842	36	36	1841 - 1842	36
Subdivisions	J. & C. B. Smith	1841 - 1842	36	36	1841 - 1842	36

The above copy of Township N^o 42 N. of Range N^o 32 West of the Principal Meridian, Mich. is hereby confirmed to the full value of the survey thereof from the register office which has been examined and approved.

Surveyor General's Office
March 14 1852

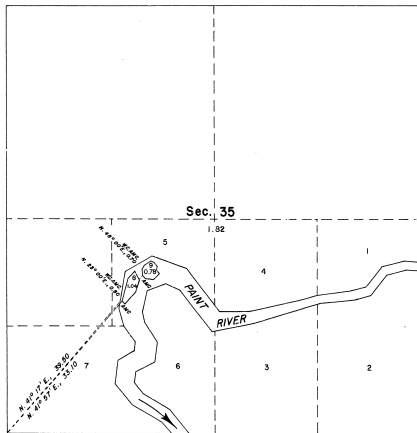
Charles F. Wells
Supt. Genl.

Com. 1852

TOWNSHIP 42 NORTH, RANGE 32 WEST, OF THE MICHIGAN MERIDIAN, MICHIGAN

SURVEY OF ISLANDS IN SECTION 35

44-57



This plat represents the survey of an island in the Paint River not previously reported on the plat of the original survey approved April 13, 1890.

This survey was executed by DeWitt A. Crain, Cadastral Surveyor, beginning October 15, 1965, and completed October 18, 1965, pursuant to the Special Instructions for Group No. 71, Michigan, dated September 23, 1965.

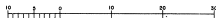
UNITED STATES DEPARTMENT OF THE INTERIOR
BUREAU OF LAND MANAGEMENT
Washington, D. C. March 31, 1966

This plat is strictly conformable to the approved field notes, and the survey, having been correctly executed in accordance with the requirements of law and the regulations of this Bureau, is hereby accepted.

For the Director

E. E. Livingston

Chief, Division of Engineering

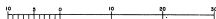
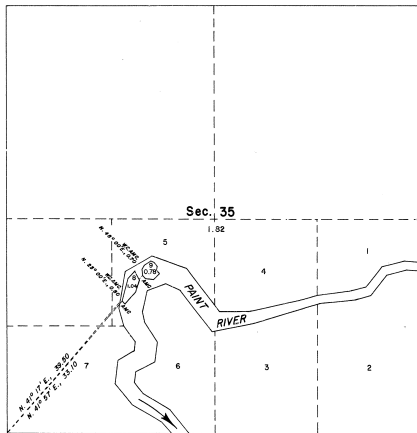


Area Surveyed: 182 Acres.

TOWNSHIP 42 NORTH, RANGE 32 WEST, OF THE MICHIGAN MERIDIAN, MICHIGAN

SURVEY OF ISLANDS IN SECTION 35

44-57



Scale in Chords

Area Surveyed: 182 Acres.

This plat represents the survey of an island in the Paint River not previously reported on the plat of the original survey approved April 13, 1890.

This survey was executed by DeWitt A. Crain, Cadastral Surveyor, beginning October 15, 1965, and completed October 18, 1965, pursuant to the Special Instructions for Group No. 71, Michigan, dated September 23, 1965.

UNITED STATES DEPARTMENT OF THE INTERIOR
BUREAU OF LAND MANAGEMENT
Washington, D. C. March 31, 1966

This plat is strictly conformable to the approved field notes, and the survey, having been correctly executed in accordance with the requirements of law and the regulations of this Bureau, is hereby accepted.

For the Director

Chief, Division of Engineering