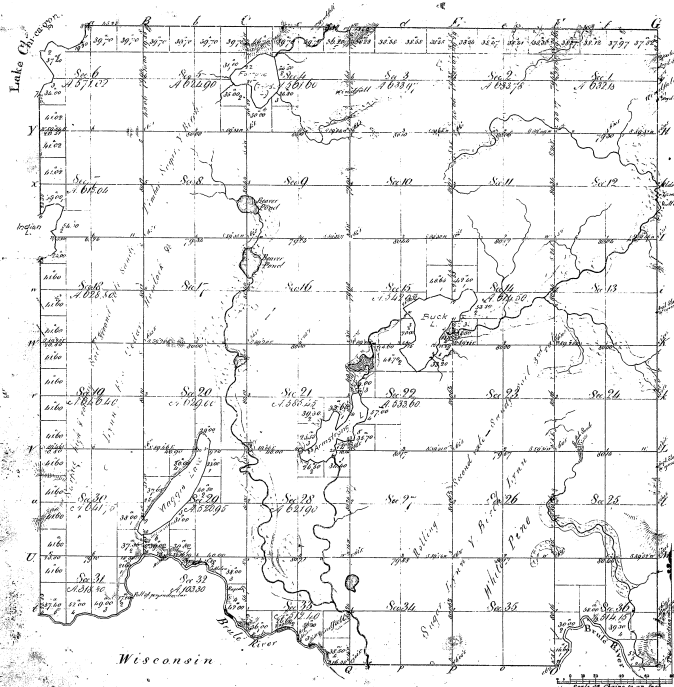


Township N^o 12 N. Range N^o 33 W.

Mer. Mich.



Master's

44-36

appearing to 10-12-60

44-36

Total number of acres 71,286.54

Original Plat	By Whom Surveyed	Date of Plat	Area of Original Plat	When Surveyed	Area of Original Plat
Trinity Hill	John S. Gales	Sept 7 1852	6 18 00	1852	1852
Trinity Hill	John S. Gales	Sept 7 1852	73 52 00	1852	1852

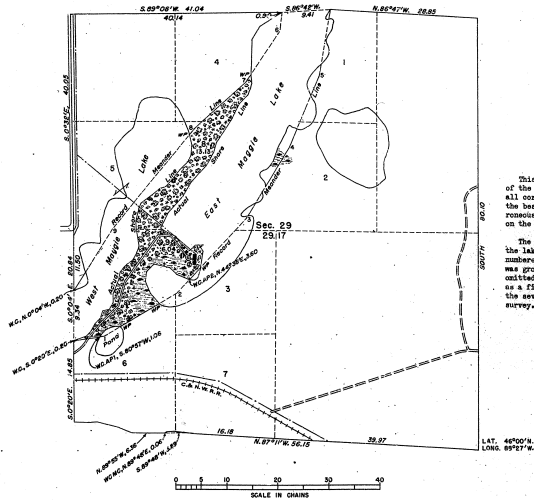
The above map of Township N^o 12 N. Range N^o 33 W. Mer. Mich. (Shaded) is a true and correct copy of the original survey as shown in the office, which has been examined and approved by the County Clerk.

County Clerk's Office, Cheboygan, Mich. Jan 18 1882

TOWNSHIP 42 NORTH, RANGE 33 WEST, OF THE MICHIGAN MERIDIAN, MICHIGAN
 SURVEY OF OMITTED LAND, SECTION 29

Rep.

44-36



Area Surveyed 29.17 Acres

Memorandum

This plat represents a retracement and reestablishment of the original boundaries of sec. 29, designed to restore all corners in their true original locations according to the best available evidence, and the survey of lands erroneously omitted from the original survey and set down on the plat approved July 2, 1852.

The position of the original record-meander courses of the lake in sec. 29 is shown by an irregular line with numbered angle points. This line, as originally reported, was greatly in error and the portions thereof bounding the omitted public land area have therefore been established as a fixed boundary, with the directions and lengths of the several courses adjusted to the record of the original survey.

Survey executed by Hugh B. Crawford from September 7 to October 7, 1956, pursuant to special instructions for Group 59, Michigan, dated September 18, 1957.

UNITED STATES DEPARTMENT OF THE INTERIOR
 BUREAU OF LAND MANAGEMENT

Washington, D. C., January 10, 1959
 This plat is strictly conformable to the approved field notes, and the survey, having been correctly executed in accordance with the requirements of law and the regulations of this Bureau, is hereby accepted.
 For the Director

Earl P. Hartung, Jr.
 Chief, Division of Cadastral Engineering