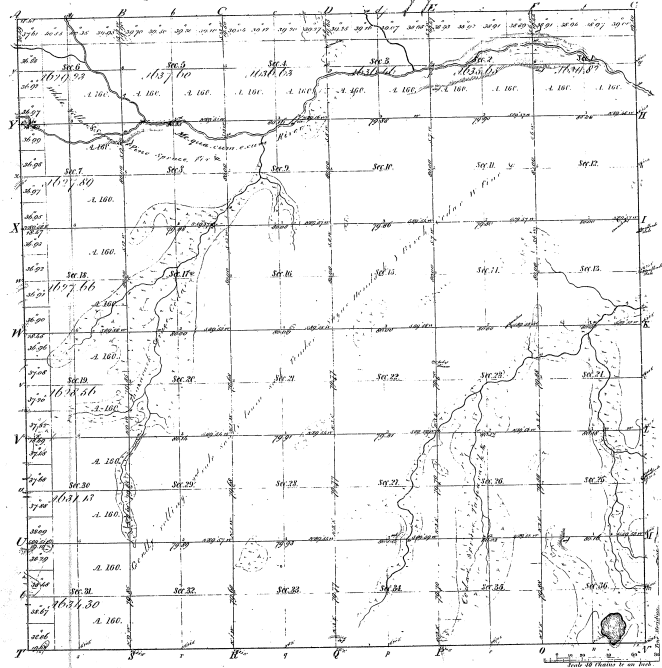


Township 1^o 44 N. Range 1^o 35 W. Mer. Mich.



Meandered by

Field Courses 1842; Field Courses 1842; Post Courses 1842

14-26

44-26

Total number of Acres 22066.03

Survey Designated	By Whom Surveyed	Date of Conduct	Amount of Survey	Area Surveyed	Plan of the Survey	Plan of the Survey as it is on the Record
Township 1 ^o 44 N. Range 1 ^o 35 W.	William A. B. Cook, Sept 7, 1847	1847	22,066.03	22,066.03	1847	1847
Subdivisions	Surveyed by John A. Cook	1847	22,066.03	22,066.03	1847	1847

The above copy of Township 1^o 44 N. Range 1^o 35 W. Mer. Mich. of the Principal Meridian Michigan is a true copy of the original & the field notes of the survey thereof on file in this Office, which have been examined and approved.

Surveyor General's Office
 Detroit, Jan. 24, 1852.
 Mark A. Allen, Surveyor General.