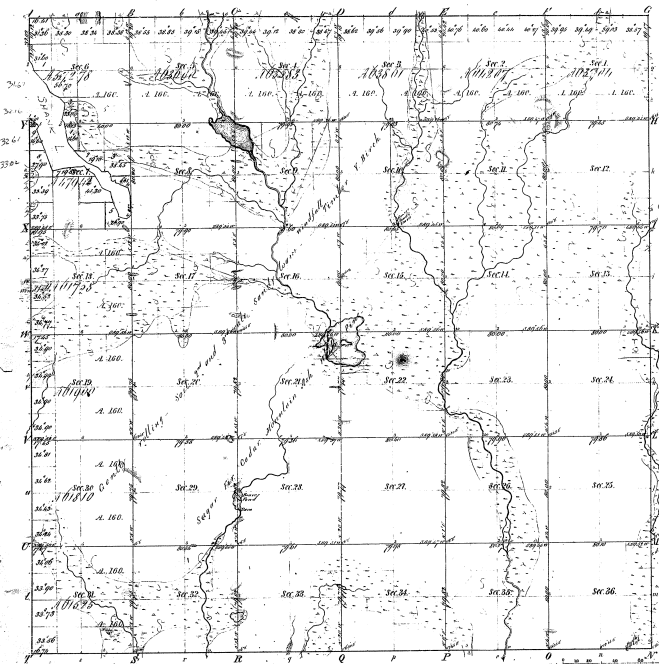


Township 1° 40' N. Range 1° 32' W. Mer. Mich.



Boundaries of
 Pre-1818 Townships 1818-1820 Townships 1820-1830

45-17

45-17

Number of Acres 32,612.28

Survey designated	By whom surveyed	Date of Contract	Amount of Survey	When Surveyed	Amount for each Acre
Township, Area	Wm. A. B. & Co. Surveyors	Sept 7 1816	32,612.28	1816	17¢
Subdivisions	Eleazer S. Stone & John Anthony	1813	12,171.28	1813-1815	50¢

The above copy of Township 1° 40' North of Range 1° 32' West of the Principal Meridian of Michigan is strictly conformable to the field notes of the survey thereon, and the plan thereon, which have been examined and approved by the Survey General's Office.
 Detroit June 1, 1853
 Sander Chapman
 Survey Genl.

3 11 02