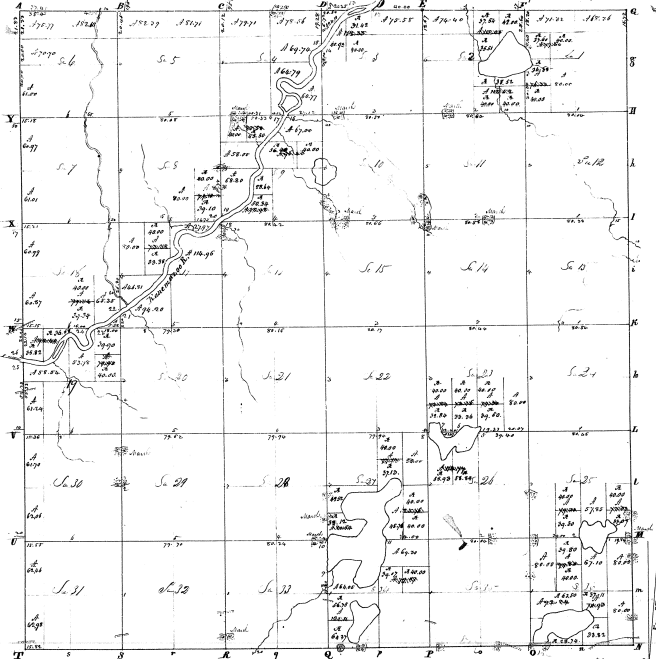


Township N 11 South, Range N 11 West 3rd (Mc Per.)



Contd.

Surveyed in November 1834 by John Mallett S.S.

1/4 in. = 60 feet = 1 mile.

Acres	Original		Acreage	
	Contd.	Contd.	Contd.	Contd.
37 1/2	PL NW 1	41 51	PL NW 1	140
50	PL NW 1	50	PL NW 1	50
71 3/2	PL NW 1	71 3/2	PL NW 1	60 22
77 1/2	PL NW 1	77 1/2	PL NW 1	65 59
140	PL NW 1	140	PL NW 1	70 54
80	PL NW 1	80	PL NW 1	59
71 3/2	PL NW 1	71 3/2	PL NW 1	60 27
117 1/2	PL NW 1	117 1/2	PL NW 1	77 20
80	PL NW 1	80	PL NW 1	53 78
118 3/2	PL NW 1	118 3/2	PL NW 1	81 79
70 5/8	PL NW 1	70 5/8	PL NW 1	160
80	PL NW 1	80	PL NW 1	50
112 1/2	PL NW 1	112 1/2	PL NW 1	41 50
24 1/2	PL NW 1	24 1/2	PL NW 1	70 00
22 1/2	PL NW 1	22 1/2	PL NW 1	60 00
70 5/8	PL NW 1	70 5/8	PL NW 1	60 00
79 1/2	PL NW 1	79 1/2	PL NW 1	23 1/2
79 1/2	PL NW 1	79 1/2	PL NW 1	80
80	PL NW 1	80	PL NW 1	77 1/2
60 27	PL NW 1	60 27	PL NW 1	53 36
160	PL NW 1	160	PL NW 1	60
81 1/2	PL NW 1	81 1/2	PL NW 1	30 1/2
80 3/2	PL NW 1	80 3/2	PL NW 1	75 1/2
80	PL NW 1	80	PL NW 1	79 30
80	PL NW 1	80	PL NW 1	80
81 1/2	PL NW 1	81 1/2	PL NW 1	23 1/2
80	PL NW 1	80	PL NW 1	114 77
77 1/2	PL NW 1	77 1/2	PL NW 1	79 77
70 5/8	PL NW 1	70 5/8	PL NW 1	140
80	PL NW 1	80	PL NW 1	80
80	PL NW 1	80	PL NW 1	71 1/2
61	PL NW 1	61	PL NW 1	140
123 1/2	PL NW 1	123 1/2	PL NW 1	80 56
80	PL NW 1	80	PL NW 1	60 00
80	PL NW 1	80	PL NW 1	22 1/2
80 2/2	PL NW 1	80 2/2	PL NW 1	61 70
77 1/2	PL NW 1	77 1/2	PL NW 1	80 1/2
50	PL NW 1	50	PL NW 1	80 1/2
102 1/2	PL NW 1	102 1/2	PL NW 1	80 1/2
80	PL NW 1	80	PL NW 1	80
92 1/2	PL NW 1	92 1/2	PL NW 1	82 1/2
85 1/2	PL NW 1	85 1/2	PL NW 1	80
38	PL NW 1	38	PL NW 1	62 98
160	PL NW 1	160	PL NW 1	60 00
28 9/8	PL NW 1	28 9/8	PL NW 1	60 00
88 80	PL NW 1	88 80	PL NW 1	60 00
11	PL NW 1	11	PL NW 1	79 1/2
12	PL NW 1	12	PL NW 1	160 00
10	PL NW 1	10	PL NW 1	80 00
80 1/2	PL NW 1	80 1/2	PL NW 1	21 1/2
16	PL NW 1	16	PL NW 1	60 00
15	PL NW 1	15	PL NW 1	35 00
18	PL NW 1	18	PL NW 1	60 00
114 9/8	PL NW 1	114 9/8	PL NW 1	89 1/2
83 1/2	PL NW 1	83 1/2	PL NW 1	79 80
75 1/2	PL NW 1	75 1/2	PL NW 1	80
50	PL NW 1	50	PL NW 1	80
160	PL NW 1	160	PL NW 1	70 23
94 20	PL NW 1	94 20	PL NW 1	42 1/2
48 8	PL NW 1	48 8	PL NW 1	118 4 3/4
48 8	PL NW 1	48 8	PL NW 1	82 1 1/2

3-11