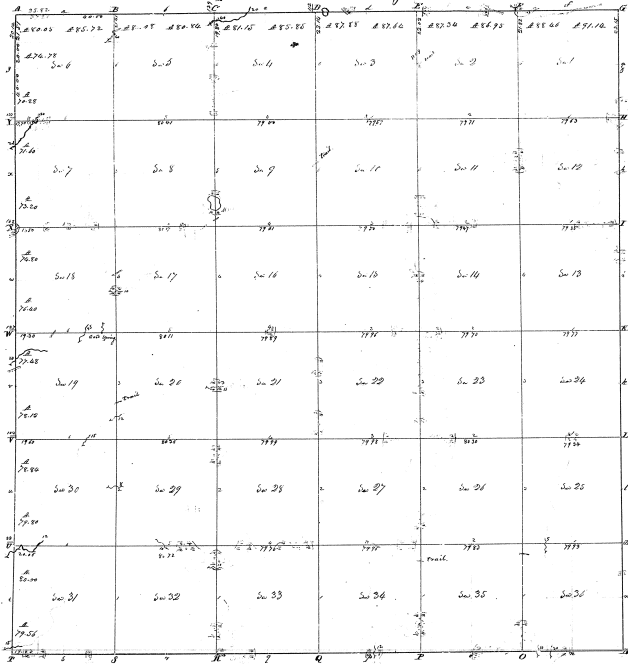


Township *N 18* south, Range *N 19* west (1st Sec.)



3-22

N 1/4 B 1	98	76	80	19	320
Sw	88	84	80	80	
N 1/4 B 2	88	84	80	77	48
Sw	88	84	80	80	
N 1/4 B 3	88	84	80	80	10
Sw	88	84	80	80	10
N 1/4 B 4	88	84	80	80	10
Sw	88	84	80	80	10
N 1/4 B 5	88	84	80	80	10
Sw	88	84	80	80	10
N 1/4 B 6	88	84	80	80	10
Sw	88	84	80	80	10
N 1/4 B 7	88	84	80	80	10
Sw	88	84	80	80	10
N 1/4 B 8	88	84	80	80	10
Sw	88	84	80	80	10
N 1/4 B 9	88	84	80	80	10
Sw	88	84	80	80	10
N 1/4 B 10	88	84	80	80	10
Sw	88	84	80	80	10
N 1/4 B 11	88	84	80	80	10
Sw	88	84	80	80	10
N 1/4 B 12	88	84	80	80	10
Sw	88	84	80	80	10
N 1/4 B 13	88	84	80	80	10
Sw	88	84	80	80	10
N 1/4 B 14	88	84	80	80	10
Sw	88	84	80	80	10
N 1/4 B 15	88	84	80	80	10
Sw	88	84	80	80	10
N 1/4 B 16	88	84	80	80	10
Sw	88	84	80	80	10
N 1/4 B 17	88	84	80	80	10
Sw	88	84	80	80	10
N 1/4 B 18	88	84	80	80	10
Sw	88	84	80	80	10
N 1/4 B 19	88	84	80	80	10
Sw	88	84	80	80	10
N 1/4 B 20	88	84	80	80	10
Sw	88	84	80	80	10
N 1/4 B 21	88	84	80	80	10
Sw	88	84	80	80	10
N 1/4 B 22	88	84	80	80	10
Sw	88	84	80	80	10
N 1/4 B 23	88	84	80	80	10
Sw	88	84	80	80	10
N 1/4 B 24	88	84	80	80	10
Sw	88	84	80	80	10
N 1/4 B 25	88	84	80	80	10
Sw	88	84	80	80	10
N 1/4 B 26	88	84	80	80	10
Sw	88	84	80	80	10
N 1/4 B 27	88	84	80	80	10
Sw	88	84	80	80	10
N 1/4 B 28	88	84	80	80	10
Sw	88	84	80	80	10
N 1/4 B 29	88	84	80	80	10
Sw	88	84	80	80	10
N 1/4 B 30	88	84	80	80	10
Sw	88	84	80	80	10
N 1/4 B 31	88	84	80	80	10
Sw	88	84	80	80	10
N 1/4 B 32	88	84	80	80	10
Sw	88	84	80	80	10
N 1/4 B 33	88	84	80	80	10
Sw	88	84	80	80	10
N 1/4 B 34	88	84	80	80	10
Sw	88	84	80	80	10
N 1/4 B 35	88	84	80	80	10
Sw	88	84	80	80	10
N 1/4 B 36	88	84	80	80	10
Sw	88	84	80	80	10
Total	11548	77			

3-22

Surveyed in June 1836 by Nathaniel Clark & Co.

Completed

Surveyed by J. C. Gen