

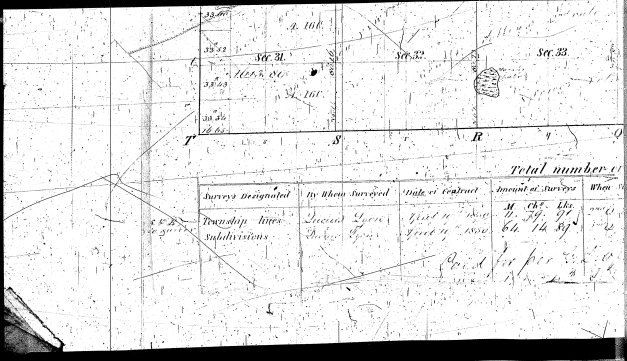
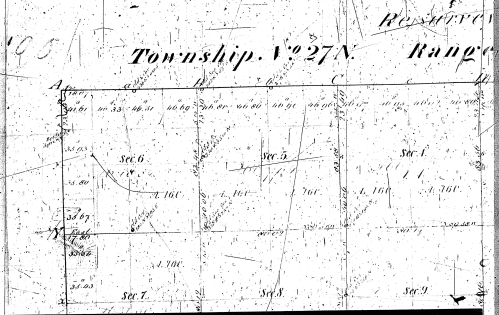


UNITED STATES  
 DEPARTMENT OF THE INTERIOR  
 BUREAU OF LAND MANAGEMENT  
 Eastern States Land Office  
 Silver Spring, Maryland 20910  
 February 6, 1968

I HEREBY CERTIFY That the paper hereto attached is a photostatic copy of the plat of survey of the lands to which it relates, which is in my custody in this Office; namely: Township 27 North of Range 8 West of the Principal Meridian, Michigan.

In TESTIMONY WHEREOF I have hereunto subscribed my name and caused the seal of this Office to be affixed, at Silver Spring, Maryland, on the day and year above written.

*William J. Rosecrance*  
 (Conflicting Office) 400 11120



47-8

UNITED STATES DEPARTMENT OF THE INTERIOR  
BUREAU OF LAND MANAGEMENT  
Washington, D. C. 20250  
1898

This survey was made under authority of the act of the 27th March 1877, approved May 22nd 1878, and the act of the 27th March 1877, approved May 22nd 1878, and the act of the 27th March 1877, approved May 22nd 1878.

A. T. TOWNSEND Surveyor General  
of the Territory of Michigan  
at [ ]  
on the [ ] day of [ ] 1850

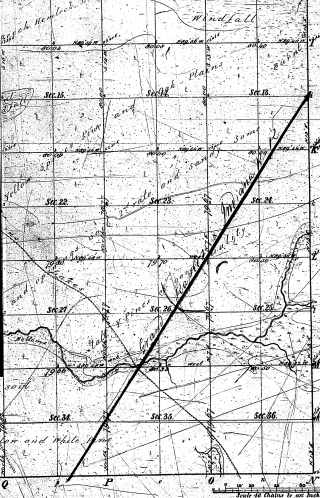
John A. [ ]  
[ ]

Total number of Acres 29,010.65

Survey organized by whom surveyed	John A. Townsend	Date of contract	March 27 1850	Amount of survey	29,010.65	When surveyed	May 1850	Where surveyed	Michigan
Township	27 N	Range	8 W	Mer.	Mich.				
Subdivisions	Section 1 to 36								
Paid for per [ ] Office Report									

This plan, map, or township, 27 N, 8 W, of Range 19 S West of the Principal Meridian, Michigan, is hereby approved by the field notes of the survey being on file in this Office, which have been examined and approved.  
Surveyor General's Office  
Detroit, Aug. 1, 1850  
Charles A. [ ]  
Superintendent

# Resurvey Township N° 27 N Range N° 8 W Mer. Mich.



Boundaries of several sections	
Section 1	2,894 2,894
Section 2	2,894 2,894
Section 3	2,894 2,894
Section 4	2,894 2,894
Section 5	2,894 2,894
Section 6	2,894 2,894
Section 7	2,894 2,894
Section 8	2,894 2,894
Section 9	2,894 2,894
Section 10	2,894 2,894
Section 11	2,894 2,894
Section 12	2,894 2,894
Section 13	2,894 2,894
Section 14	2,894 2,894
Section 15	2,894 2,894
Section 16	2,894 2,894
Section 17	2,894 2,894
Section 18	2,894 2,894
Section 19	2,894 2,894
Section 20	2,894 2,894
Section 21	2,894 2,894
Section 22	2,894 2,894
Section 23	2,894 2,894
Section 24	2,894 2,894
Section 25	2,894 2,894
Section 26	2,894 2,894
Section 27	2,894 2,894
Section 28	2,894 2,894
Section 29	2,894 2,894
Section 30	2,894 2,894
Section 31	2,894 2,894
Section 32	2,894 2,894
Section 33	2,894 2,894
Section 34	2,894 2,894
Section 35	2,894 2,894
Section 36	2,894 2,894

29,010.65