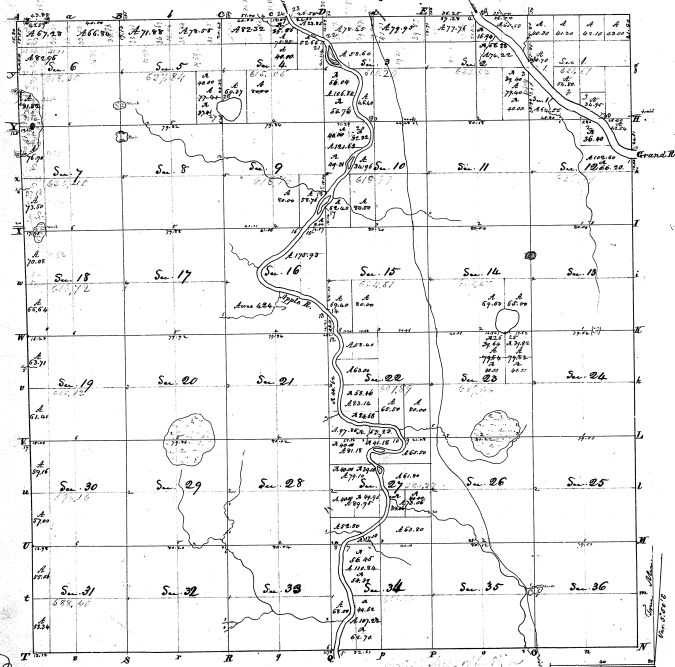


Township N. 7 North, Range N. 1 West Mer. (Mch. Ter.)

7-19

7-19



1000 ft.

Surveyed in January 1831, by John Hallist, S.S.
 and Surveyor of the
 Co. of the State
 20th

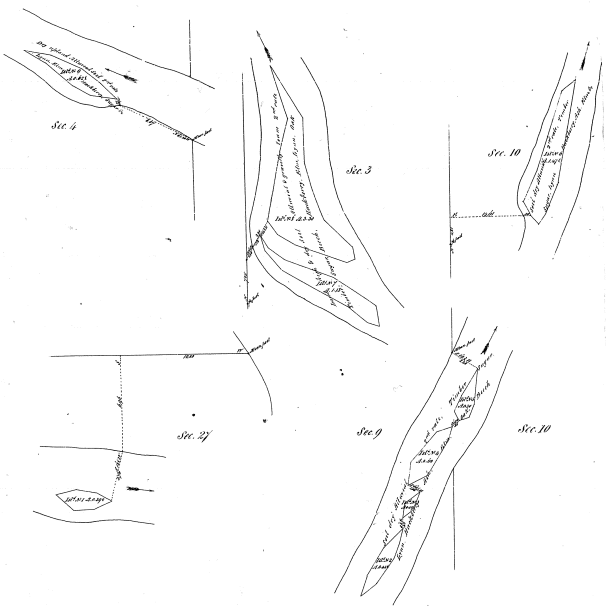
The above plat of Township N. 7 North, Range N. 1 West Mer. (Mch. Ter.) is truly conformable to the field notes of the survey thereof, as filed in this Office, which have been examined & approved. Surveyor General's Office
 Cincinnati, Dec. 5th 1831
 M. J. Williams
 Sec. Genl.

117A

Islands in Thorn Apple River
Township N. 6 N. Range N. 10 W. Mer. Mich.

7-19

7-19



Surveyed by Thos. Whipple under instructions May 25, 1859, in 1858

Scale: 4 Chains to an Inch; var. 3.368

The above Maps of Township N. 6 North of Range N. 10 West of the
 Principal Meridian of Michigan is strictly conformable to the field notes
 of the Survey thereof on file in this Office which have been examined and approved

Surveyor General's Office
 Detroit April 15th 1857

A. S. Coninson
 Secy. Genl.