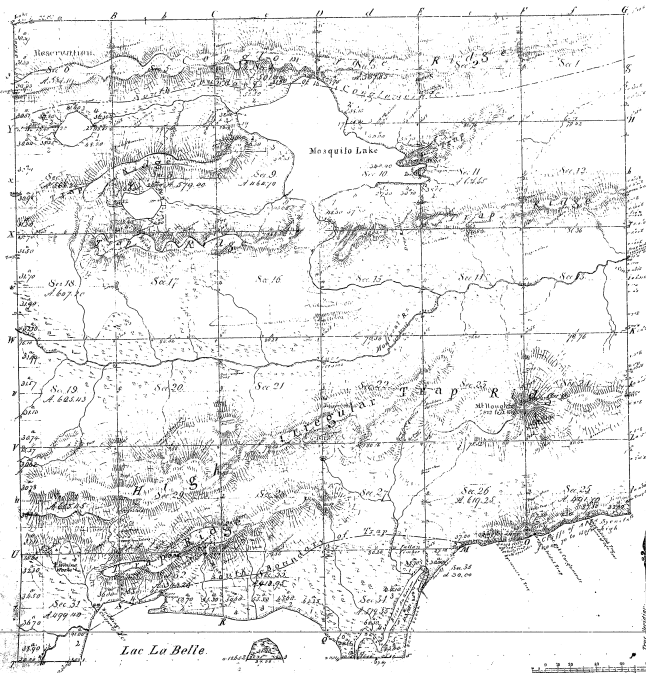


Township N^o 58 N Range N^o 29 W.

Mer. Mich^s



40-280

Section	Acres	Owner	Remarks
1			
2			
3			
4			
5			
6			
7			
8			
9			
10			
11			
12			
13			
14			
15			
16			
17			
18			
19			
20			
21			
22			
23			
24			
25			
26			
27			
28			
29			
30			
31			
32			
33			
34			
35			
36			

Note:

Section 6 of this Township is reserved for Public purposes by the Executive Order of the State of Michigan, dated July 27, 1837, and is under the control of the State of Michigan.

The Commissioner of the General Land Office is authorized to sell or lease any portion of this section or any portion thereof without special instructions when called for by the General Land Office.

Total number of acres 19,873.96

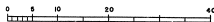
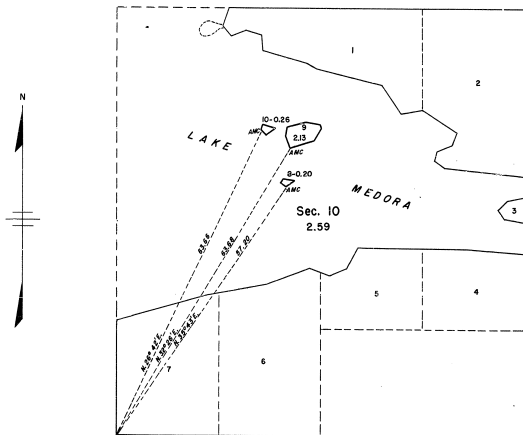
Survey	By Whom Surveyed	Date of Survey	Amount of Survey	When Surveyed	When Closed up
Township lines	Wm. & Elmer	June 25, 1840	8, 19, 23	3 ^d of 1842	1846
Section lines	James S. & R. B. G. & Co.	June 25, 1840	24 ac. 56	4 th of 1846	1846

The above map of Township N^o 58 N Range N^o 29 West of the Mer. Mich. is a true and correct copy of the original map on file in the Office of the Surveyor General, Mich. and is approved by the Surveyor General, Mich. and is approved by the Surveyor General, Mich.

Surveyor General, Mich.
 General Office, Mich.

40-28 (2)

TOWNSHIP 58 NORTH, RANGE 29 WEST OF THE MICHIGAN MERIDIAN, MICHIGAN
SURVEY OF THREE ISLANDS IN LAKE MEDORA, SECTION 10



Scale in Chains

Area Surveyed: 2.59 Acres

This plat represents the survey of three islands in Lake Medora which were not included in the original survey of the township which is represented on the plat approved September 1, 1847.

Surveyed by Norville E. Shearer, Cartographer (Cadastral), on August 22, 1955, under Special Instructions dated April 26, 1955 and Supplemental Special Instructions dated August 5, 1955, for Group 68, Michigan.

UNITED STATES DEPARTMENT OF THE INTERIOR
BUREAU OF LAND MANAGEMENT
Washington, D. C. February 17, 1956

This plat is strictly conformable to the approved field notes, and the survey, having been correctly executed in accordance with the requirements of law and the regulations of this Bureau, is hereby accepted.

For the Director

Cadastral Engineering Staff Officer