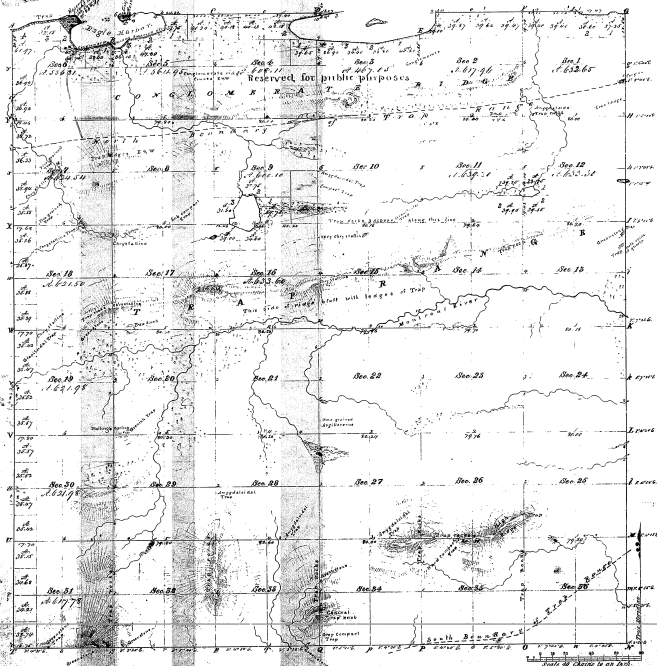


Township N. 56 N. Range N. 50 W.

Her. Mich.



4021

Note

Sections 1, 2, 3 & 36 of this Township were "Returned to Public" pursuant to the Proclamation of the U.S. on the 27th of April 1851, as appears by a Letter of the Comdr. of the General Land Office, dated 15th July 1851 on file in this office. The Land Office has not to permit any sale or entry of any portion of the lands thus reserved, without specific instructions in that effect from the Comdr. of the General Land Office.

The copy is made

Total number of acres 32452.01

Survey	Number of Acres	Date of Survey	Number of Acres	Date of Survey
Survey	11712.5	1851	11712.5	1851
Partially	11712.5	1851	11712.5	1851
Subsequent	11712.5	1851	11712.5	1851

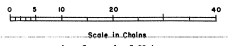
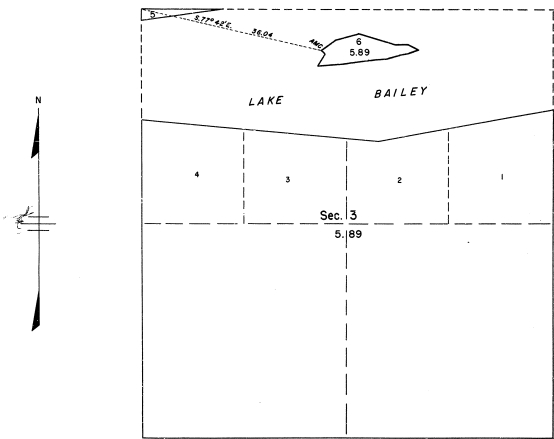
The above Map of Township N. 56 N. Range N. 50 W. was prepared by the Sheriff of Michigan, and is hereby certified to be a true and correct copy of the original survey map on file in the office, and has been examined and approved.

Surveyor General's Office
 Detroit, Mich. 1851

James L. Lyon, Secy. Genl.

410-270

TOWNSHIP 58 NORTH, RANGE 30 WEST OF THE MICHIGAN MERIDIAN, MICHIGAN
 SURVEY OF ISLAND IN LAKE BAILEY, SECTION 3



Area Surveyed: 5.89 Acres

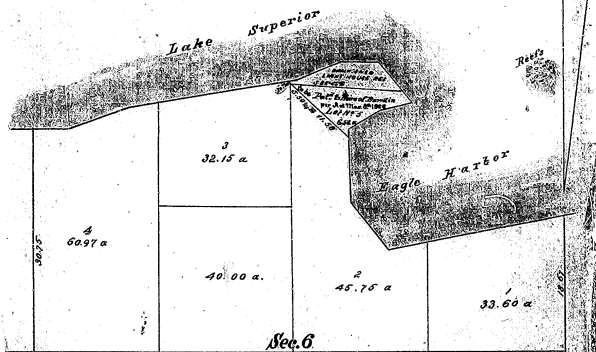
This plat represents the survey of an island in Lake Bailey which was not included in the original survey of the Township which is represented on the plat approved May 8, 1846.

Surveyed by Norville E. Shearer, Cartographer (Cadastral), on Aug. 24, 1905, under Special Instructions dated April 26, 1905 and Supplemental Special Instructions dated August 5, 1905, for Group 63, Michigan.

UNITED STATES DEPARTMENT OF THE INTERIOR
 BUREAU OF LAND MANAGEMENT
 Washington, D. C. February 27, 1956

This plat is strictly conformable to the approved field notes, and the survey, having been correctly executed in accordance with the requirements of law and the regulations of this Bureau, is hereby accepted.

For the Director
Carl G. Harrington
 Cadastral Engineering Staff Officer



Sec. 6
Tp. No. 58 N. R. 30 W. Mich.

General Land Office
May 12th 1866

I hereby certify that the above is a plat of the
Subdivision made under the Acts of 5th April
1832 & 22nd January 1853, (and in accordance with the
Act of March 8th 1866) of a part of the 6, being the Light
House Reservation at Eagle Harbor, Michigan, in the
District of Lands subject to sale at Marquette Mich.

Commissioner of the General Land Office