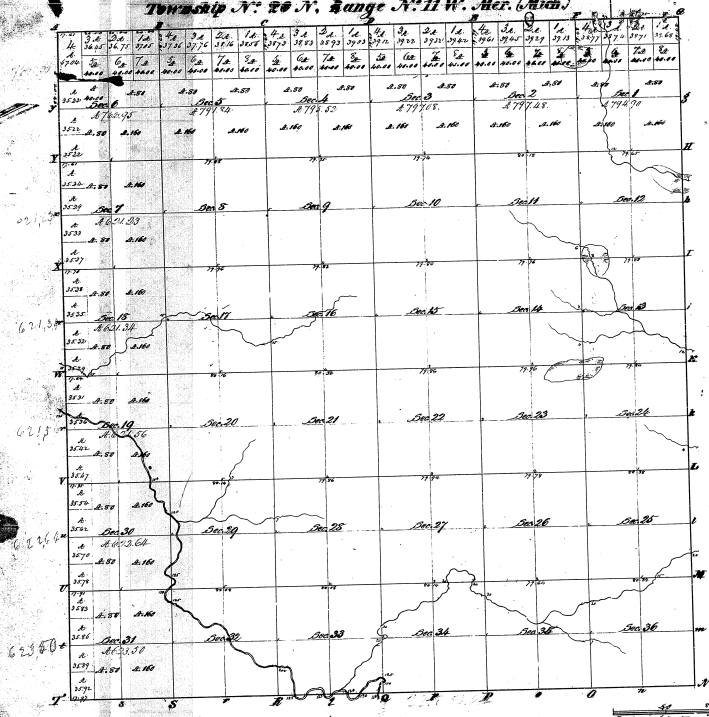


Township N. 20 N., Range N. 11 W., Mer. (Mich.)



11-2

11-2

Section of Range 11 W. 20 N.

Section	Owner	Acres	Year
1	John Smith	36.00	1830
2	John Smith	36.00	1830
3	John Smith	36.00	1830
4	John Smith	36.00	1830
5	John Smith	36.00	1830
6	John Smith	36.00	1830
7	John Smith	36.00	1830
8	John Smith	36.00	1830
9	John Smith	36.00	1830
10	John Smith	36.00	1830
11	John Smith	36.00	1830
12	John Smith	36.00	1830
13	John Smith	36.00	1830
14	John Smith	36.00	1830
15	John Smith	36.00	1830
16	John Smith	36.00	1830
17	John Smith	36.00	1830
18	John Smith	36.00	1830
19	John Smith	36.00	1830
20	John Smith	36.00	1830
21	John Smith	36.00	1830
22	John Smith	36.00	1830
23	John Smith	36.00	1830
24	John Smith	36.00	1830
25	John Smith	36.00	1830
26	John Smith	36.00	1830
27	John Smith	36.00	1830
28	John Smith	36.00	1830
29	John Smith	36.00	1830
30	John Smith	36.00	1830
31	John Smith	36.00	1830
32	John Smith	36.00	1830
33	John Smith	36.00	1830
34	John Smith	36.00	1830
35	John Smith	36.00	1830
36	John Smith	36.00	1830

See above Map of Township N. 20 N., Range N. 11 W. of the Principal Meridian, Michigan, a County of the State of Michigan, as the same appears on file in the Office of the Surveyor General's Office, Detroit, Mich. 20th 1839.

3

Geo. W. Jones

Surveyor General