

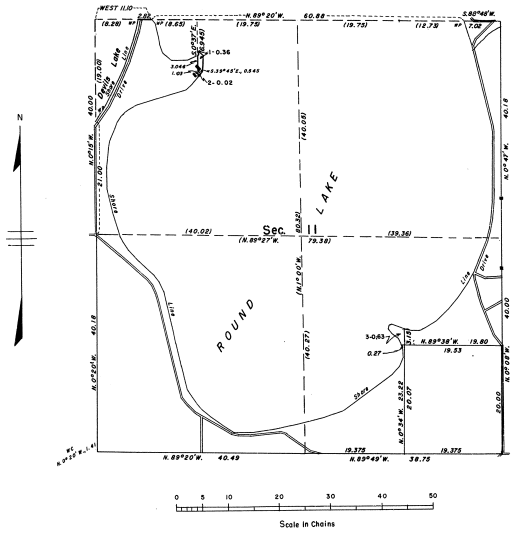
Permanently a contract was entered into from Edward J. Spivey, former General of the United States Army, to the land of 1815. I have administered land out and surveyed the above described township, and do hereby certify that it has been marked and bounded both natural & artificial in an appropriate and good plat and a sufficient number of field notes, made thereof and returned with this plat into the Surveyor General's Office.

Thomas Cowley, D. Surveyor

1875

TOWNSHIP 6 SOUTH, RANGE 1 EAST, MICHIGAN MERIDIAN, MICHIGAN  
DEPENDENT RESURVEY AND PARTIAL SUBDIVISION, SECTION 11

30-21 (2)



This plat represents a retracement and reestablishment of the boundaries of Section 11 designed to restore all corners to their true original locations as shown upon the updated plat of the original survey. The section has been subdivided as required to determine the extent of the public lands remaining within the E3/4 and W3/4, which lands have been redesignated as Lots 1 and 2 and Lot 3, respectively. The shore line of Round Lake has been accurately measured in front of those subdivisions.

Surveyed by Hugh B. Crawford, Cadastral Engineer, from October 21 to November 10, 1954, pursuant to Special Instructions for Group 62, Michigan, dated August 12, 1954.

UNITED STATES DEPARTMENT OF THE INTERIOR  
BUREAU OF LAND MANAGEMENT  
Washington, D. C. August 19, 1955

This plat is strictly conformable to the approved field notes, and the survey, having been correctly executed in accordance with the requirements of law and the regulations of this Bureau, is hereby accepted.

For the Director  
*Carl S. Harrington*  
Cadastral Engineering Staff Officer