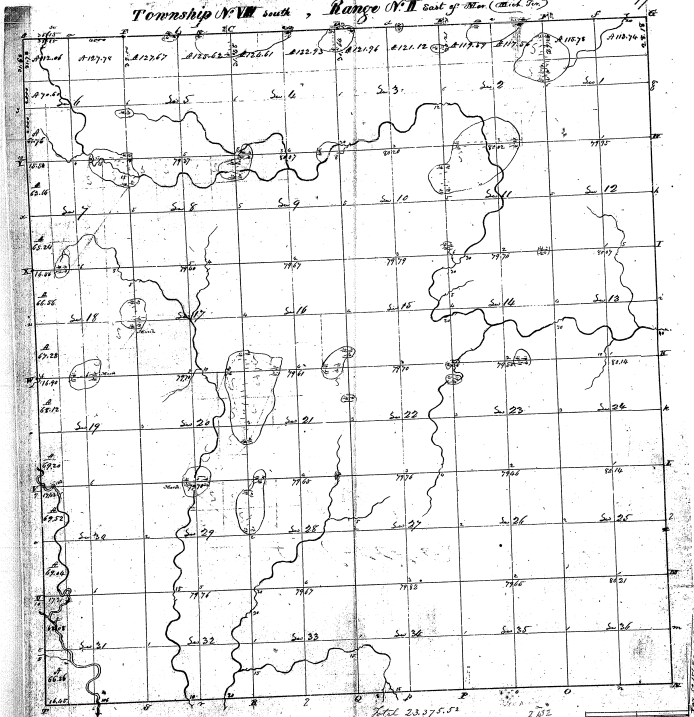


Township 17th South, Range 17th East of Mer. (cont. Sec.)



30-32

30-32

Plat 23, 27, 5, 52
 Pursuant to a contract with said restrictions from Edward J. Fox, Surveyor General of the United States, bearing date the 10th day of May 1854, and approved by the said Surveyor General, and by the said Secretary of the Interior, that it is the duty of the said Surveyor General to cause to be surveyed and returned as an approved map and plat a duplicate of the said Township 17th South, Range 17th East of Mer. (cont. Sec.) as shown on the attached map and plat, and to cause the same to be filed in the office of the Surveyor General - Witness this 15th day of May 1854
 John Mullins, c.