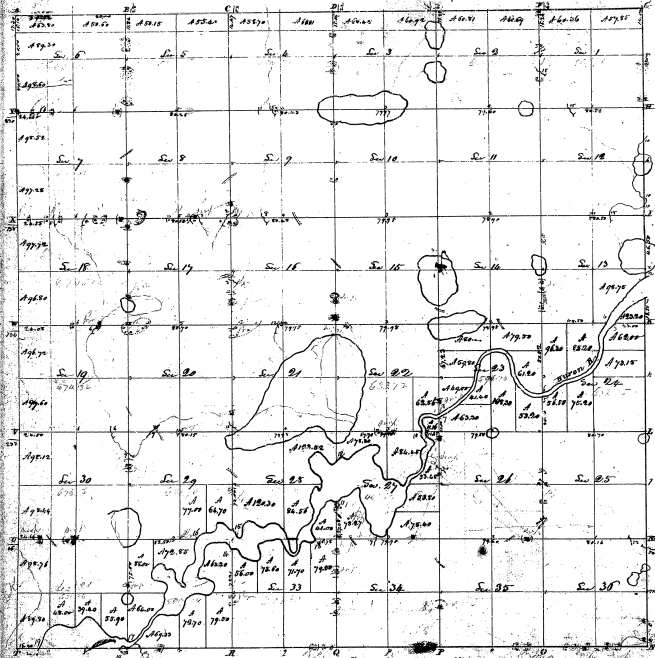


Township N. 1 north, Range N. 7 East Nev. (Mack-Tow.)

18



28-4

28-40

26

Pursuant to a contract with and instructions from Charles E. Hooper General of the United States Survey, over the map
 I have determined the set and bearing the same Township, and so hereby that it has been made
 to conform both National and Official, as an additional representation on said plan and same to be the same as
 said set and bearing with the like of the Hooper General Office. Dated at the City of New York, 1853

Shamples, Sr.