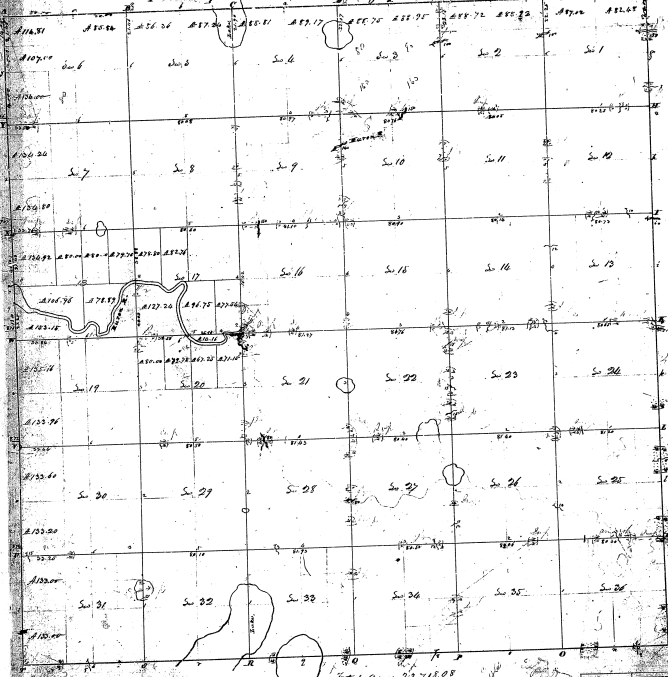


Township 071 N. Range N. 12. East of 100 (22 1/2 S-1)



Total Area 23,718.08

Consistent to a backcast and instructions from Deputy after survey of the United States Survey and the
 day of
 I have measured and set out and surveyed the above described land as set out in the field notes and
 made and have the original and returned on the first and second in the field notes and
 returned with this plat into the Surveyor General's office at St. Louis, Mo. the 10th day of June 1857

Samuel J. [Signature]

31
 27-39