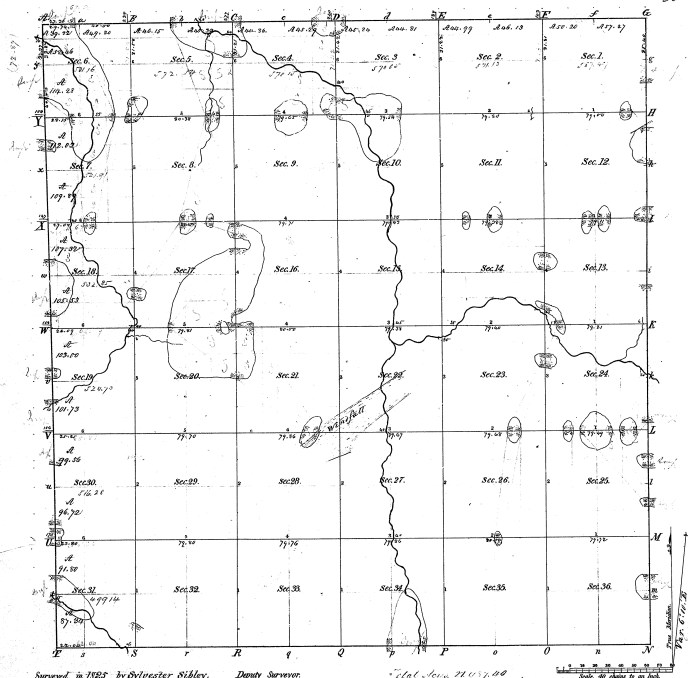


Township N^o 5 N. Range N^o 3 East Mer. (Mich.)

23

29-30

29-30



Surveyed in 1885 by Sylvester Nibley, Deputy Surveyor.

Sub. Sec. 24 1/2 00
 I certify that the above is a true copy of the
 plat in this office.
 Surveyor General's Office,
 Cincinnati.

Sur. Genl.