

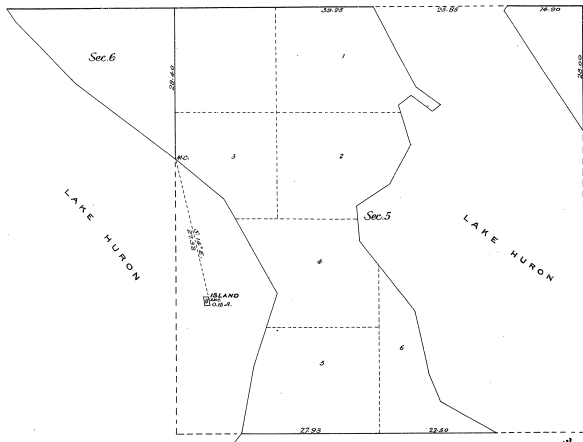
PLAT OF AN ISLAND

in Lake Huron
in Sec. 5, T₃. 41 N., R. 1 E., Mich. Mer.,
MICHIGAN.

Surveyed by C.M. Whiteside, U.S. Deputy Surveyor, February 3, 1900,
under special instructions from the Commissioner G.L.O., bearing date Dec 28, 1900.

Scale, 10 chs. to an inch.

33-35
33-35

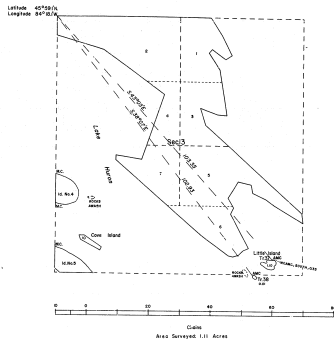


Department of the Interior,
General Land Office,
Washington, D.C., Aug. 24, 1910.

The above plat of an island in Lake Huron, in Sec. 5, T₃. 41 N., R. 1 E., Mich. Mer., Michigan, is a correct plat of a survey executed by C.M. Whiteside, U.S. Dep. Surveyor, in pursuance of special instructions from the Commissioner of the General Land Office, bearing date Dec. 28, 1900, and is strictly conformable to the field notes of survey thereof on file in this office, which have been examined and approved.

John D. ...
Commissioner and ex-officio
U.S. Surveyor General for Michigan.

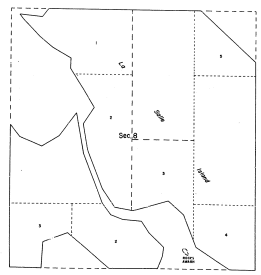
TOWNSHIP 41 NORTH, RANGE 1 EAST, OF THE MICHIGAN MERIDIAN, MICHIGAN. SURVEY OF ISLANDS



A history of surveys is contained in the field notes.
This plat represents the survey of two islands in Lake Huron, within the State of Lee (Thomas) Islands, T. 41 N., R. 1 E., Michigan Meridian, Michigan.

Plans for the new tracts as shown herein, the lotting and areas are as shown on the plans approved January 21, 1860 and April 20, 1861.

Survey conducted by Stephen G. Beach, Cadastral Surveyor, on August 22, 1973, pursuant to Special Instructions dated July 17, 1973, for Group No. 77, Michigan.



UNITED STATES DEPARTMENT OF THE INTERIOR
BUREAU OF LAND MANAGEMENT
Denver, Colorado July 8, 1980

This plat is strictly conformable to the approved field notes, and the survey, having been correctly executed in accordance with the requirements of law and the regulations of this Bureau, is hereby accepted.

For the Director

Chief, Cadastral Survey
Examination and Approval Staff

PLAT OF COVE ISLAND

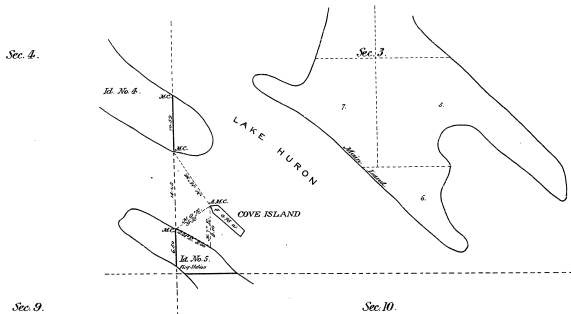
in Sec. 3, T. 41 N., R. 1 E., Mich. Meridian,
(in Lake Huron)
MICHIGAN.

Surveyed by Byron E. Cubley, U.S. Dep. Surveyor, May 25 to 28th 1900,
under special instructions from the Com. of The Genl. Land Office, dated May 14, 1900.

Scale 30 chs = 1 inch.

33-35

33-301



DEPARTMENT OF THE INTERIOR,
General Land Office,
Washington, D.C. April 30, 1901.

The above plat of Cove Island, in Sec. 3, T. 41 N., R. 1 E., Mich. Meridian, Michigan, in Lake Huron, is a correct plat of a survey executed by Byron E. Cubley, U.S. Dep. Surveyor, in pursuance of special instructions from the Commissioner of the General Land Office, bearing date May 14th 1900, and is strictly conformable to the field notes thereof, on file in this office, which have been examined and approved.

Ring
Commissioner General for Michigan