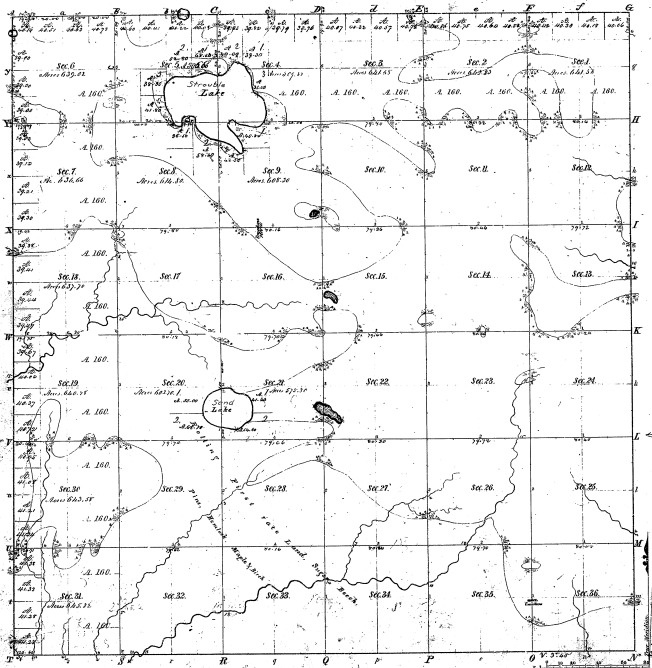


Township 1° 45' N. Range 3° 2' W. Mer. Mich.



| Number of | Acres | Value | Assessed | Value |
|-----------|-------|-------|----------|-------|
| 36        | 12960 |       |          |       |
| 4         | 144   |       |          |       |
| 6         | 216   |       |          |       |
| 10        | 360   |       |          |       |
| 22        | 792   |       |          |       |

24-35

Total number of Acres 22 622.51

| Survey     | By Whom Surveyed | Date of Survey | Amount of Acres | When Surveyed | Amount for and set in the Sec. 100 |
|------------|------------------|----------------|-----------------|---------------|------------------------------------|
| Township   | A. D. Smith      | April 11, 1880 | 62 05 36        | 1880          | 1122                               |
| Subdivided | W. H. Brown      | April 2, 1882  | 62 72 32        | 1882          | 1122                               |

The above map of Township 1° 45' North of Range 3° 2' West of the Principal Meridian Michigan is hereby certified to be the full and correct copy of the original filed in the office and has been examined and approved  
 George G. Smith, C. L.  
 Sheriff  
 August 10, 1885  
 Lewis J. Brown, Secy.

Not in