

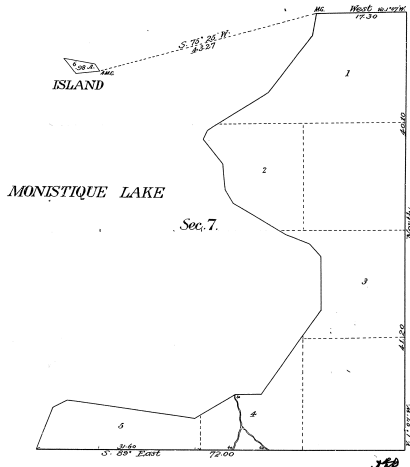


PLAT OF AN ISLAND

in Monistique Lake, in Sec. 7, Tp. 44 N., R. 11 W., Mich. Mer.  
MICHIGAN.

Surveyed by Charles M. Whiteside, U.S. Deputy Surveyor, Sept. 18 to 21, 1908,  
under special instructions from the Com<sup>r</sup> G. L. O., bearing date July 14, 1908.

Scale, 10 chs = 1 inch.



Department of the Interior,  
General Land Office,  
Washington, D.C., Nov. 27, 1908.

The above plat of an Island in Monistique Lake, in Sec. 7, Tp. 44 N., R. 11 W., Mich. Mer., Michigan, is a correct plat of a survey executed by Charles M. Whiteside, U.S. Deputy Surveyor, in pursuance of special instructions from the Commissioner of the General Land Office, bearing date July 14, 1908, and is strictly conformable to the field notes of the survey hereof on file in this office, which have been examined and approved.

*Paul Bennett*

Commissioner of the office  
U.S. Surveyor General of Michigan.

35-29  
35-29-2