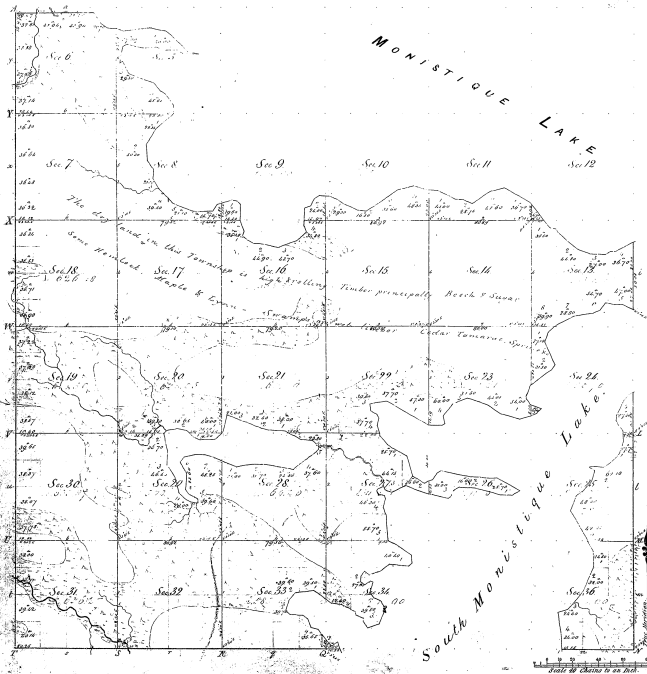


Township N. 44 N. Range N. 12 W.

Mer. Mich.

E
36-28



No.	Acres	Owner	Course	Dist	Course	Dist	Course	Dist	Course	Dist

Survey Disputed	By Whom Disputed	Date of Contest	Verdict of Jury	When Disputed	When Contested in the Superior Court
Township Cont.	Wm. H. Beck	March 28 1851	\$ 675 75	20th June 1851	
Subscribers	Comp. W. Carlson	July 14 1851	\$3 28 22	22nd June 1851	

Total number of Acres 11,500 ±

The above Map of Township N. 44 N. Range N. 12 W. Part of the Original Township of Berne is hereby confirmed this 6th day of July 1851 in pursuance of the provisions of the Act in that behalf made.

John W. Cowley, Clerk of the Court.
 Detroit, April 6, 1851.

Witness my hand and Seal of Office this 6th day of July 1851.
 J. W. Cowley, Clerk of the Court.

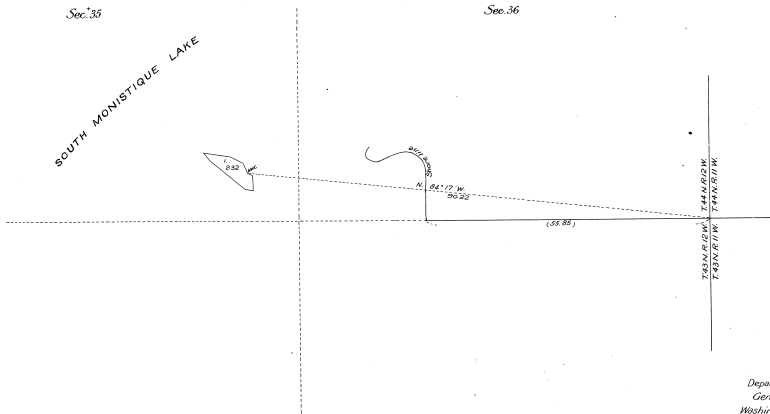
PLAT OF AN ISLAND
IN SOUTH MONISTIQUE LAKE
IN SEC. 35, T. 44 N., R. 12 W., MICH. MER.,
MICHIGAN.

Executed by Chas. M. Pidgeon, U.S. Surveyor, July 8, 1911, under
special instructions from the Com' G.L.O., bearing date June 19, 1911.

Scale: 10 Chs. to an inch.

36-28
36-28

36-28
3



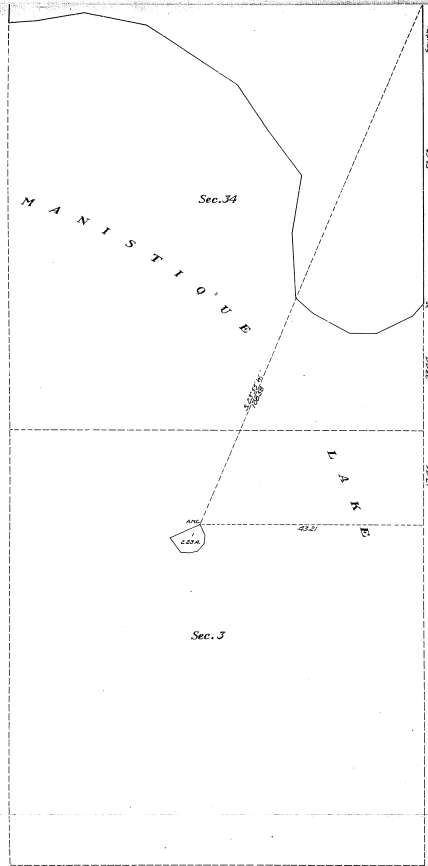
Department of the Interior,
General Land Office,
Washington, D.C., Dec. 4, 1912.

Sec. 1.

The above is a correct plat of survey of an island in South Monistique Lake, in Sec. 35, T. 44 N., R. 12 W., Michigan Meridian, Michigan, executed by Chas. M. Pidgeon, U.S. Surveyor, in pursuance of special instructions from the Commissioner of the General Land Office, bearing date June 19, 1911, and is strictly conformable to the field notes of survey thereof on file in this office, which have been examined and approved.

Paul Bennett
Commissioner and ex officio
U.S. Surveyor General for Michigan

36
36-28



*PLAT OF AN ISLAND
IN MANISTIQUE LAKE,
in Sec. 3, Tp. 4-4 N., R. 12 W., Mich. Mer.,
MICHIGAN.*

*Surveyed by Francis W. DuBois and Francis F. McKinney, U.S. Transf. Mens. July 6-8,
1914, under special instructions from the Com^r of the G.L.O., bearing date May 27, 1914.*

Scale, 10 chs. to an inch.

*Area of lands surveyed - 2.23 acres, not shown upon the plat
approved April 15, 1915.
Areas of previously surveyed lands not shown.*

*Department of the Interior
General Land Office
Washington, D.C., May 24, 1915.*

*The above plat of an island in Manistique Lake, in Sec. 3, Tp. 4-4 N.,
R. 12 W., Mich. Mer., Michigan, is strictly conformable to the field
notes of the survey thereof, on file in this office, which have
been examined and approved.*

[Signature]
Commissioner and ex officio
U.S. Surveyor General for Michigan