

Bois Blancs Island



Plat of the Island of BOIS BLANC, in the Straights of Michillimackinac.

Rev. & with Sen. Gombel's letter Oct 5. 1827 and file
7/22 v. 10. 10/10/1827

Surveyed in June July & August 1827.

by Lucius Lyon Esq.

Note.

Section No. 5 reserved by the U.S. for a Light House
Sections Nos 10, 11, 12, 13, 14, 15, 16, 17, 18, 19, 20, 21, 31, 32, 33, 34, are reserved to supply fuel for the garrison at Michilimackinac!

These reservations were approved by the President Nov. 8. 1827 as per plat filed with letter from War Dept of Sept. 11. 1827. See file of Reservations for Milit. & Light House purposes Michigan.



June 13 1829 Secy War to L. Lyon says no longer required for Mich. cases. Instruction of the Comm. G.L.O. to Sur. Genl. June 29. 1829.

57-3-3

Contents.		Sec.	Acres	Sec.	Acres	Sec.	Acres	Sec.	Acres
1	120.94	9	27.24	17	80.00	25	77.75		
2	106.87	10	27.24	18	80.00	26	77.75		
3	104.02	11	27.24	19	80.00	27	77.75		
4	101.77	12	27.24	20	80.00	28	77.75		
5	99.63	13	27.24	21	80.00	29	77.75		
6	102.10	14	27.24	22	80.00	30	77.75		
7	100.10	15	27.24	23	80.00	31	77.75		
8	88.15	16	27.24	24	80.00	32	77.75		
9	87.51	17	27.24	25	80.00	33	77.75		
10	87.51	18	27.24	26	80.00	34	77.75		
11	87.51	19	27.24	27	80.00				
12	87.51	20	27.24	28	80.00				
13	87.51	21	27.24	29	80.00				
14	87.51	22	27.24	30	80.00				
15	87.51	23	27.24	31	80.00				
16	87.51	24	27.24	32	80.00				
17	87.51	25	27.24	33	80.00				
18	87.51	26	27.24	34	80.00				
19	87.51	27	27.24						
20	87.51	28	27.24						
21	87.51	29	27.24						
22	87.51	30	27.24						
23	87.51	31	27.24						
24	87.51	32	27.24						
25	87.51	33	27.24						
26	87.51	34	27.24						
27	87.51								
28	87.51								
29	87.51								
30	87.51								
31	87.51								
32	87.51								
33	87.51								
34	87.51								

Genl Land Office Oct. 18th 1827
This Island Survey is changed
in acct for 3rd of 1824 roughly part.
at \$3. per mile \$410.75
Report 76:52.780

Note by a plat of the Private Claims on this Island
certified by Edmund Piffin Sur. Genl. January 9. 1829
it appears that Section 31. has been surveyed
for the heirs of Charles Gauthier, Claim No. 2. 619⁰⁰/₁₀₀ Acers

A true copy of the Original filed in this Office.
Surveyor General's Office
Chillicothe, Oct. 5th 1827

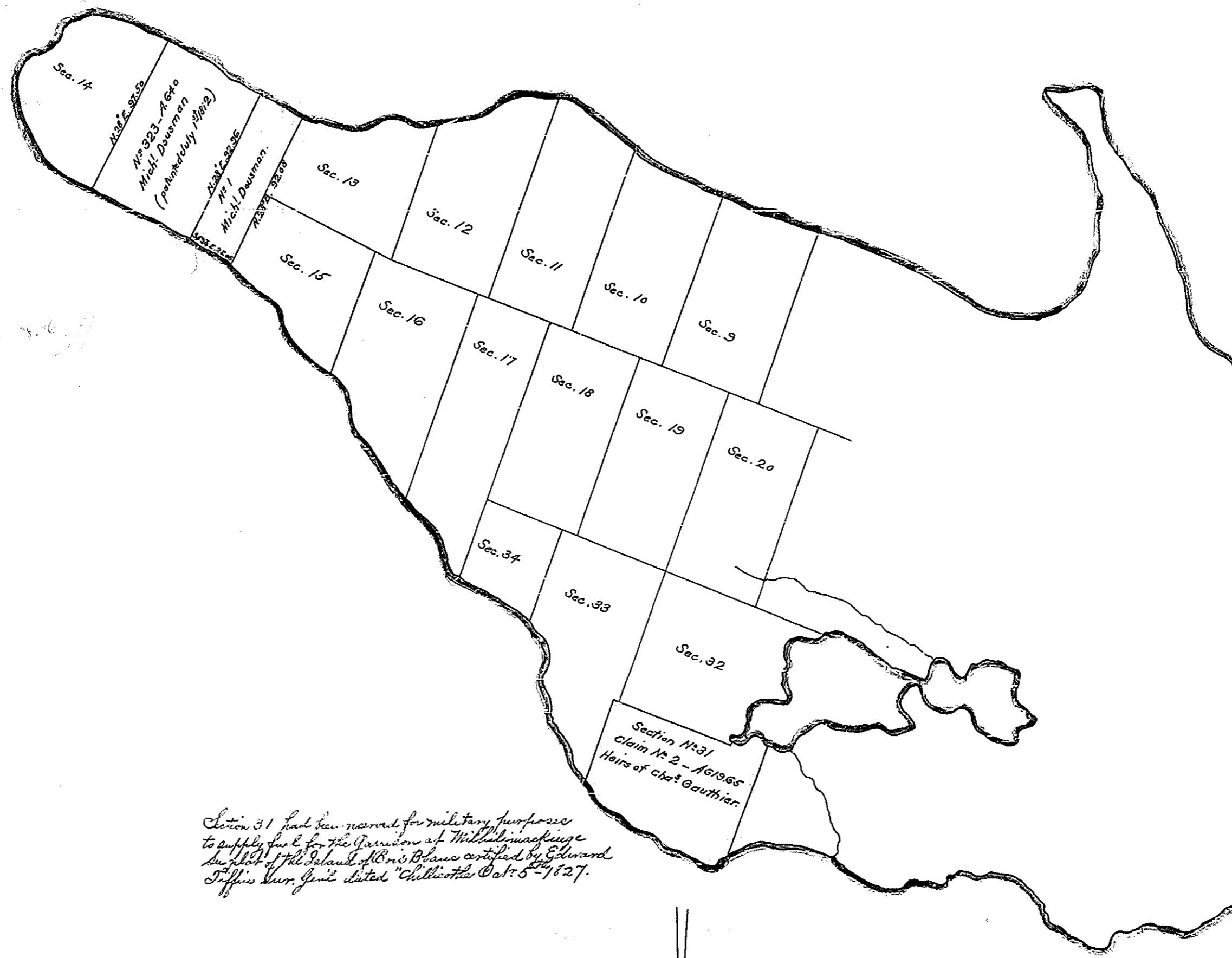
Edward Piffin
Sur. Genl.

Copy of this plat sent to the Register at Detroit
Mich. May 10th 1825 - See Records of Surveying Division
True Meridian
Var. 3° E. 42' 40.5"

Scale 40 Ch^s to an Inch

DEPARTMENT OF THE INTERIOR,
GENERAL LAND OFFICE,
Washington, D. C.
I hereby certify that this is a true copy of the plat of
survey of the lands to which it relates, on file in this office.

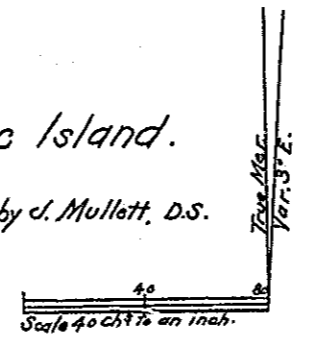
Assistant Commissioner



Section 31 had been reserved for military purposes to supply fuel for the Garrison at Michilimackinac on plot of the Island of Bois Blanc certified by Edward Tiffin Sur. Genl dated "Chillicothe Oct 5-1827."

Claims Nos 182, on Bois Blanc Island.

Surveyed in Nov. 1828 by J. Mullett, D.S.

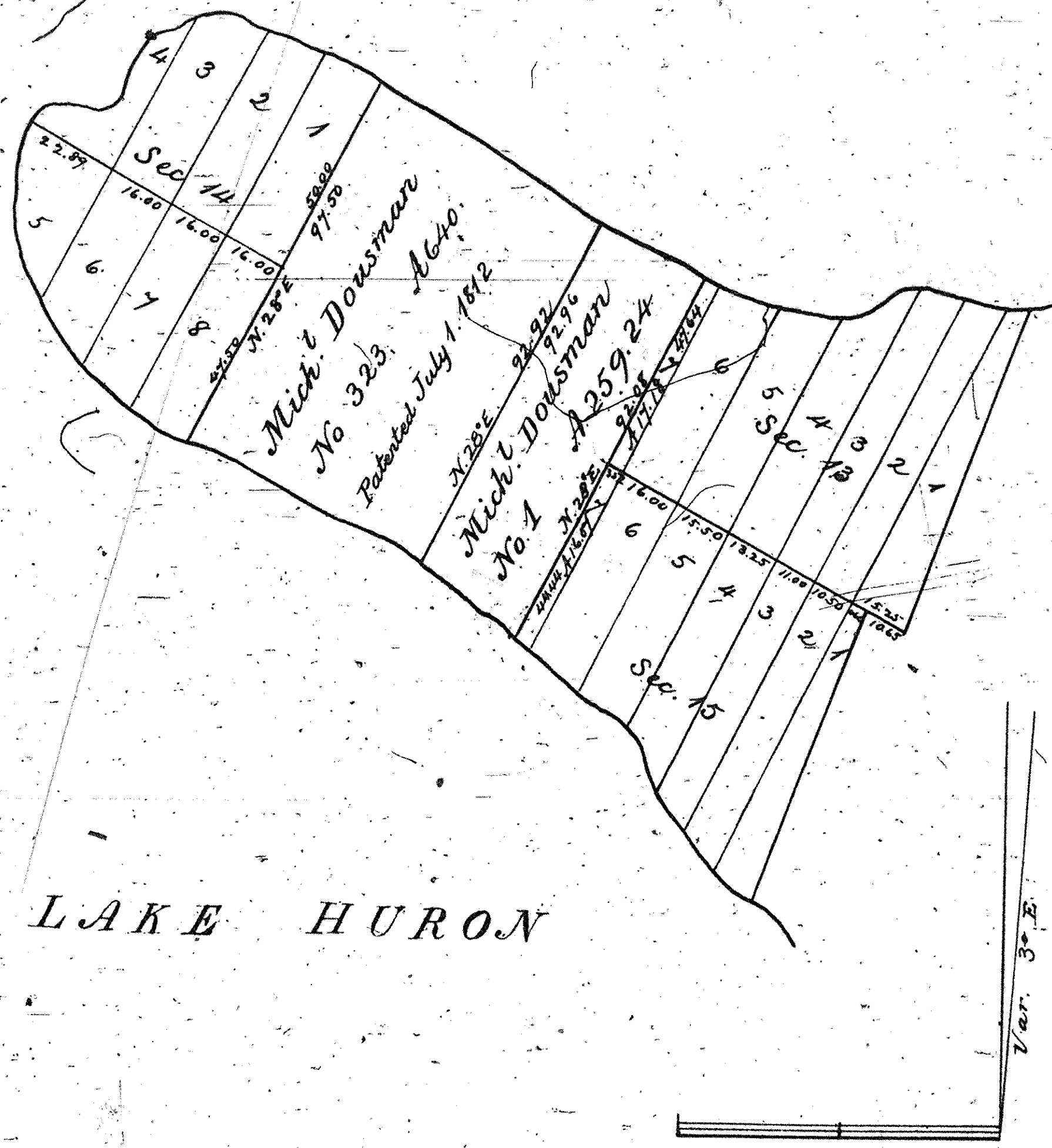


DEPARTMENT OF THE INTERIOR,
GENERAL LAND OFFICE,
Washington, D.C. June 23-1914.
I hereby certify that this is a true copy of the plat of
survey of the lands to which it relates, on file in this office.
S. H. Parrott
Acting Assistant Commissioner.

A true copy
Surveyor General's Office
9th January 1829
Edward Tiffin

Compared with original and correct

Received with letter of 16. 1844 from Agent Cincinnati Ohio
M. Douseman's private Claims, and Public Surveys
adjacent, on Bois Blanc I, in Lake Huron



LAKE HURON

A true copy from the original Map
 Surveyor General's Office
 Cincinnati July 15. 1844.
 William Johnston
 Surveyor Genl.

DEPARTMENT OF THE INTERIOR,
 GENERAL LAND OFFICE,
 Washington, D. C. June 22 1912.
 I hereby certify that this is a true copy of the plat of
 survey of the lands to which it relates, on file in this office.

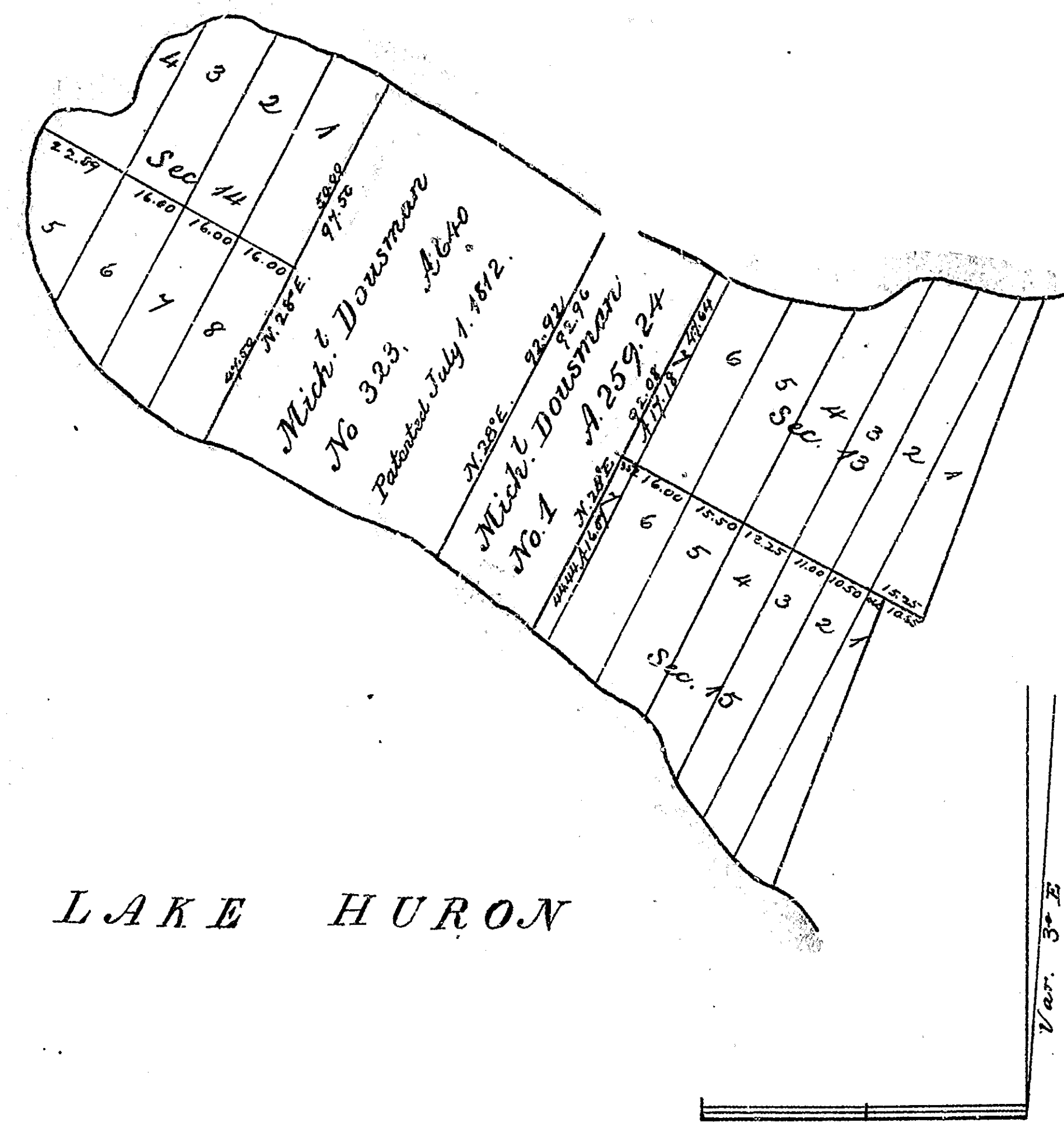
C. M. Bruce
 Assistant Commissioner

69

59-38

Compared with original and correct

Received with letter of 16. 1844 from Dept Cincinnati Ohio.
M. Douseman's private Claims, and Public Surveys
adjacent, on Bois Blanc I, in Lake Huron



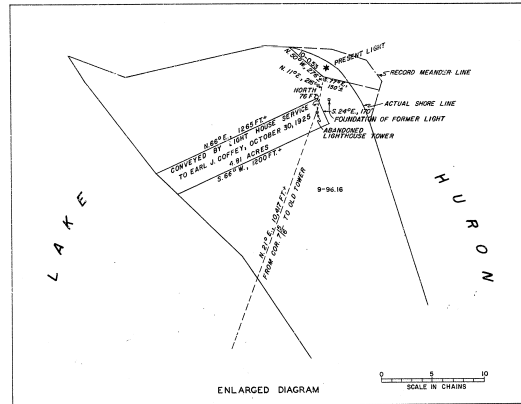
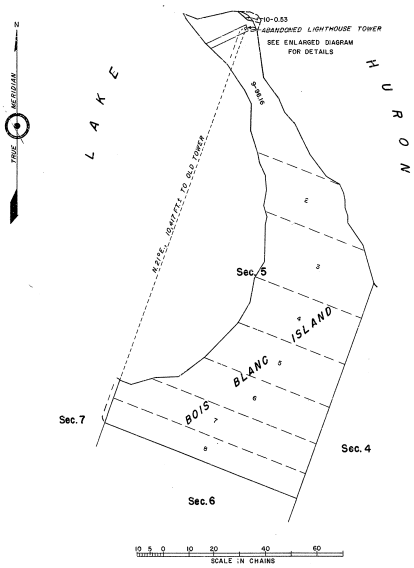
LAKE HURON

A true copy from the original Map
 Surveyor General's Office
 Cincinnati July 15. 1844.
 William Johnston
 Surveyor Genl.

DEPARTMENT OF THE INTERIOR,
 GENERAL LAND OFFICE,
 Washington, D. C. June 27 1844.
 I hereby certify that this is a true copy of the plat of
 survey of the lands to which it relates on file in this office.
 C. M. Smith
 Assistant Commissioner

TOWNSHIP 39 NORTH, RANGE 1 WEST, MICHIGAN MERIDIAN, MICHIGAN
 SUPPLEMENTAL PLAT OF SECTION 5

5938-2



This supplemental plat of sec. 5, based upon the plat approved October 5, 1927, has been prepared as an administrative measure, in accordance with data received from the Commandant, U.S. Coast Guard, by letter dated December 3, 1959, to provide designations and areas of lands in former Lot 1, Sec. 5 is public land reserved for lighthouse purposes. The Coast Guard has relinquished as excess to its further needs all of sec. 5 except a prescribed tract around the present light, which tract by this plat has been designated as new lot 10. The residual area of former Lot 1, less the tract previously conveyed by the Lighthouse Service, is designated as new Lot 9.

UNITED STATES DEPARTMENT OF THE INTERIOR
 BUREAU OF LAND MANAGEMENT
 Washington, D.C. April 11, 1960

This plat, showing amended lottings, is based upon the official records, and having been correctly prepared in accordance with the regulations, is hereby accepted.

For the Director
Donald C. Cameron
 Cadastral Engineering Staff Officer