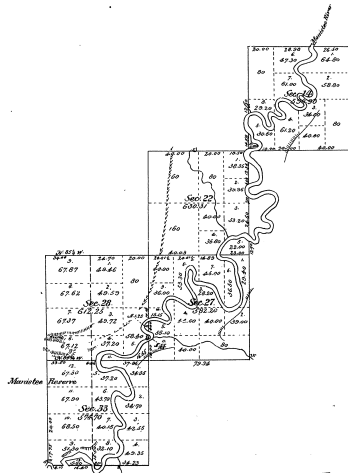


17-33

17-33

Supplemental Plat
 of
Part of Tp 22 North, Range 13 West, Mich PM,
 MICHIGAN.

Scale, 40 chs = 1 inch.



Department of the Interior,
 General Land Office.

Washington, D.C., July 8th 1886.

I hereby certify that the above is a plot of the lottings in 5793-SW Sec 19, west of Manistee River; SE $\frac{1}{4}$ Sec 22, W $\frac{1}{2}$ -SW Sec 27, west of Manistee River; NE $\frac{1}{4}$ -SE $\frac{1}{4}$ Sec 28, east of Manistee River; SE $\frac{1}{4}$ -SE $\frac{1}{4}$ Sec 28, south of Manistee River; and SE-SW Sec 28, south of Manistee River, Tp 22 North, Range 13 West, Mich PM, Michigan, made in accordance with the provisions of Section 2219 U.S. Revised Statutes.

Spillock
 Acting Commissioner's Office
 U.S. Surveyor General for Michigan.

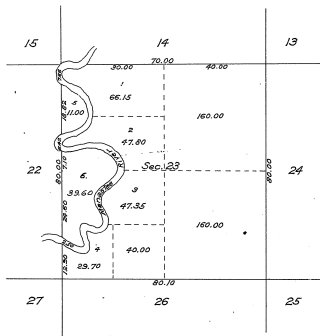
SUPPLEMENTAL PLAT

section 23, T. 22 N., R. 13 W., Mich. Mer.

MICHIGAN.

Scale: 20 chains to an inch.


17-33
17-33



17-33
17-33

Department of the Interior,
General Land Office,
Washington, D. C., September 28, 1917.

This supplemental plat of section 23, T. 22 N., R. 13 W., Mich. Mer. Michigan, is made for the purpose of showing the legal designation of the lots on the west bank of the Menominee River, by which patent was issued, March 28, 1871, to the State of Michigan, and is hereby approved.


Commissioner and ex officio
U. S. Surveyor General for Michigan.