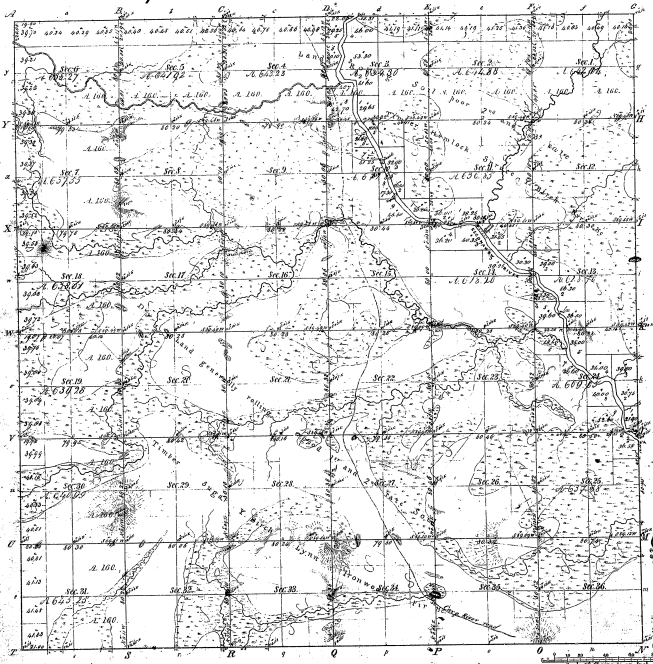


Township 43 N Range 25 W Mer. Mich



Boundaries of  
 1842  
 1843  
 1844  
 1845  
 1846  
 1847  
 1848  
 1849  
 1850  
 1851  
 1852  
 1853  
 1854  
 1855  
 1856  
 1857  
 1858  
 1859  
 1860  
 1861  
 1862  
 1863  
 1864  
 1865  
 1866  
 1867  
 1868  
 1869  
 1870  
 1871  
 1872  
 1873  
 1874  
 1875  
 1876  
 1877  
 1878  
 1879  
 1880  
 1881  
 1882  
 1883  
 1884  
 1885  
 1886  
 1887  
 1888  
 1889  
 1890  
 1891  
 1892  
 1893  
 1894  
 1895  
 1896  
 1897  
 1898  
 1899  
 1900

35 20

38-26

Mean, East of the 1st.

Total number of Acres 22,951.55

Survey designated	By Whom Surveyed	Date of Contract	Amount of Survey	When Surveyed	Boundaries of the Survey
Traverse	M. M. Hall	June 10, 1852	66.57	St. Charles 1852	
Hydrographic	M. M. Hall	Bound 11, 1852			

The above Map of Township 43 North Range 25 West of the  
 Principal Meridian Michigan is hereby approved by the Field Notes  
 of the survey thereon on file in this Office, which have been examined and approved.  
 George General Office  
 Detroit May 22, 1862  
 S. C. Johnson  
 Surveyor