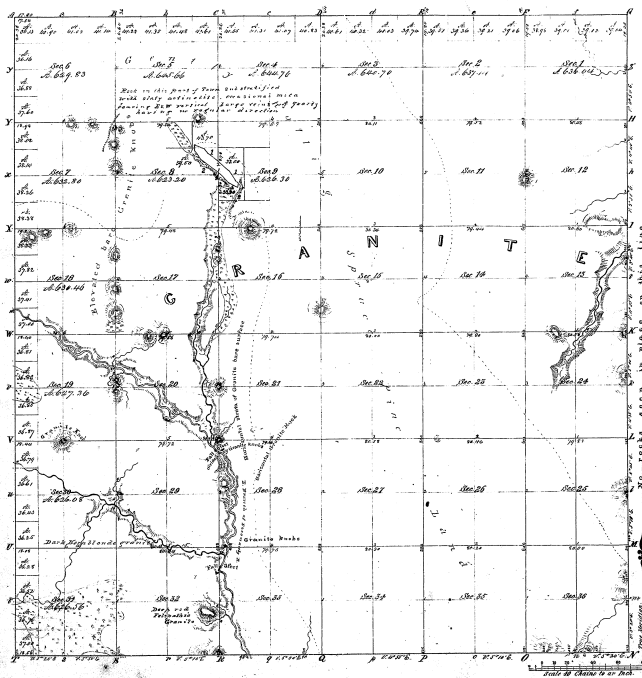


Township N^o 46 N. Range N^o 25 W. Mer. Mich.

This figure was made by the original surveyor and is not a copy of a copy.



Mileage of		Mileage of		Mileage of	
From	To	From	To	From	To
1	2	1	2	1	2
3	4	3	4	3	4
5	6	5	6	5	6
7	8	7	8	7	8
9	10	9	10	9	10
11	12	11	12	11	12
13	14	13	14	13	14
15	16	15	16	15	16
17	18	17	18	17	18
19	20	19	20	19	20
21	22	21	22	21	22
23	24	23	24	23	24
25	26	25	26	25	26
27	28	27	28	27	28
29	30	29	30	29	30
31	32	31	32	31	32
33	34	33	34	33	34
35	36	35	36	35	36

3936

34-36

Total number of acres 2004.59

Survey proposed	By whom surveyed	Date of Contract	Amount of Survey	When Surveyed	When Closed on the Survey
Traverse line	Wm. A. Black	Jan 21 1854	2004.59	2004.59	1854
Subdivisions	R. Boughton	Jan 21 1854	61.26	61.26	1854

The above Map of Township N^o 46 N. Range N^o 25 West of the Principal Meridian is a duly authorized and approved copy of the original survey on file in this Office, which has been examined and approved.

Surveyor General's Office
 Detroit, May 8, 1884
 Edward Rogers, Secy. Genl.