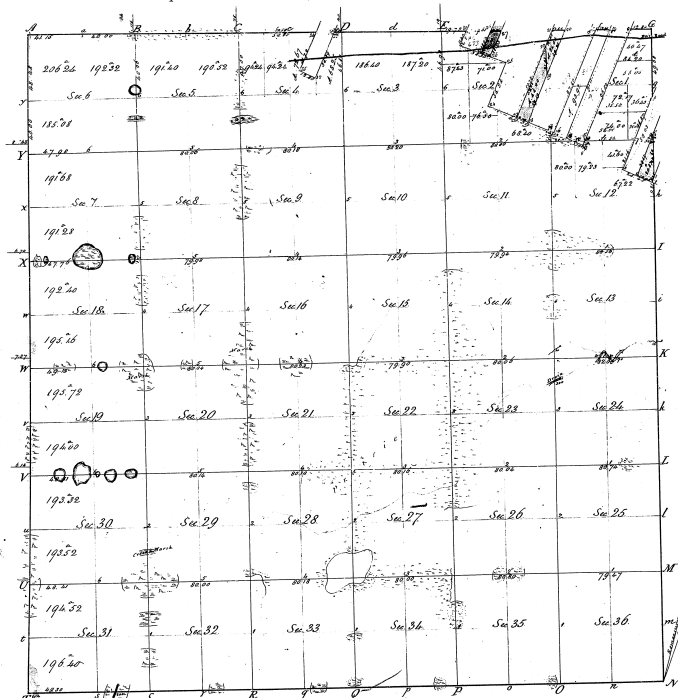


Township N<sup>o</sup> 7 S. Range N<sup>o</sup> 7 E. Mer. Michigan.



Not to be  
reproduced

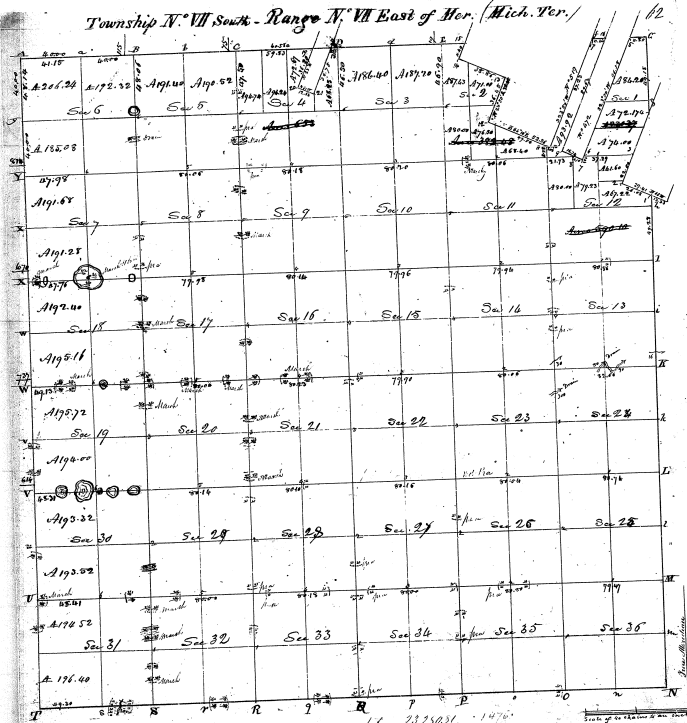
31-38

31-33

Surveyed in 1830 by Joseph Wampler D.S.  
Re-measurements by Orange Hudson D.S. in 1880

The above Map of Township N<sup>o</sup> 7 South Range N<sup>o</sup> 7 East of the  
Principal Meridian Michigan is a true and correct copy of the field  
of the survey thereof on file in this Office, which bears true  
and faithful  
testimony  
G. W. H. H. H.  
Clerk of the Survey Office  
Detroit May 29 1880

Township IV. VII South - Range N. VII East of Mer. (Mich. Ter.)

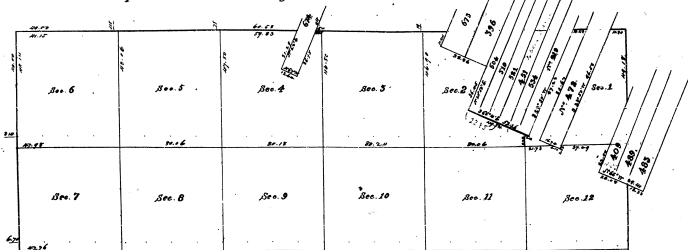


31-33

21-33

Consistent to a contract with and instructions from Edward Egan Survey General of this western state, having date this day of  
 I have accompanied said act and changed the above boundary, and in so doing that I had such marks and lines as  
 both natural and artificial as are situated on the face or front and down to in the field notes, maps, things and papers  
 with this plat into the Survey General's office. Witness my hand and seal this 10th day of June 1870.  
 Edward Egan

Township N<sup>o</sup> 7 South, Range N<sup>o</sup> 7 East.



Surveyed to B. by \_\_\_\_\_ Deputy Surveyor.

I certify that the above is a true copy of the plat in this Office.  
 Surveyor General's Office. \_\_\_\_\_ Sec'y

FROM GEORGE GO-S  
 N.H.C.  
 "SURVEYS AND FIELD NOTES"  
 "P. 8" etc. - 1878-1885

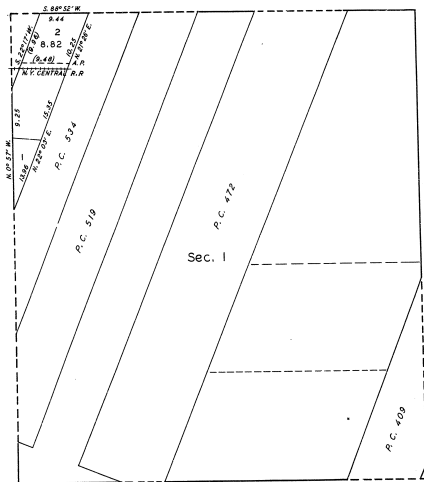
TOWNSHIP N<sup>o</sup> 7 SOUTH, RANGE N<sup>o</sup> 7 EAST, MICHIGAN MERIDIAN, MICHIGAN

SUPPLEMENTAL PLAT OF SECTION 1

SCALE: 1 INCH = 10 CHAINS

81-33

31-33



UNITED STATES  
DEPARTMENT OF THE INTERIOR  
GENERAL LAND OFFICE  
WASHINGTON, D. C., JULY 10, 1942.

THIS SUPPLEMENTAL PLAT OF SEC. 1, TOWNSHIP NO. 7 SOUTH, RANGE NO. 7 EAST, OF THE MICHIGAN MERIDIAN, MICHIGAN, BASED UPON THE PLAT APPROVED AUGUST 6, 1931, SHOWING A LEGAL DESIGNATION AND AREA FOR A TRACT OF LAND APPLIED FOR UNDER THE ACT OF SEPTEMBER 24, 1940 (54 STAT. 195), U. S. D. 08901, HAVING BEEN CORRECTLY PREPARED IN ACCORDANCE WITH THE REGULATIONS OF THIS OFFICE, IS HEREBY APPROVED.

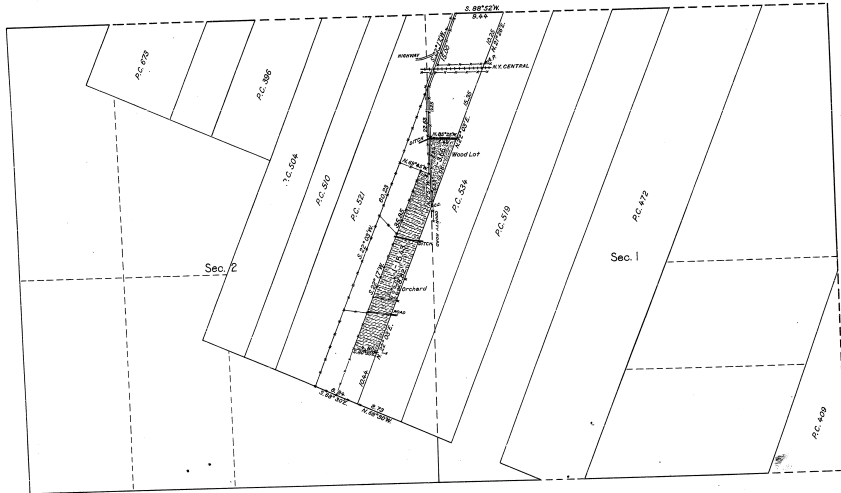
*Paul David Wolfson*  
ASSISTANT COMMISSIONER.



TOWNSHIP No. 7 SOUTH, RANGE No. 7 EAST, OF THE MICHIGAN MERIDIAN, MICHIGAN  
 SUPPLEMENTAL PLAT OF SECTIONS 1 AND 2

Scale: 10 chains to an inch

31-33 (6)  
 31-33



MEMORANDUM

THIS PLAT DELINEATES THE DEPENDENT RESERVE OF PORTIONS OF THE BOUNDARIES OF SECTIONS 1 AND 2, AND OF PRIVATE LAND CLAIMS NOS. 521 AND 534, AND THE SUBDIVISION OF PUBLIC LAND AREAS IN SECTIONS 1 AND 2, DERIVING LOCATIONS OF FRACTIONAL AREAS TO ACCORDANCE APPLICATION S. L. O. 02247, EXECUTED BY ARTHUR W. BROWN, U. S. GEODASTRAL ENGINEER, FROM SEPTEMBER 24 TO OCTOBER 4, 1930, UNDER SPECIAL INSTRUCTIONS FOR SHOP NO. 22, DATED AUGUST 29, 1929, APPROVED BY THE COMMISSIONER'S LETTER "E" DATED MAY 28, 1930.

THE PRIVATE LAND CLAIMS WERE SURVEYED BY ARDOR SUGLET, SURVEYOR OF PRIVATE CLAIMS, IN 1850 AND 1810. THE SUBDIVISIONAL SURVEYS WERE EXECUTED BY JOSEPH WATKINS, D. S., IN 1820, AS SHOWN UPON PLAT APPROVED JUNE 12, 1820. A PORTION OF THE PRIVATE LAND CLAIM BOUNDARIES AND ADJOINING SECTION LINES WERE SURVEYED BY GRANGE BROWN, D. S., IN 1846 AND 1847, AS SHOWN UPON PLAT APPROVED MAY 29, 1850.

OFFICE OF THE U. S. SUPERVISOR OF SURVEYS  
 DENVER, COLORADO, AUGUST 6, 1931.

THE ABOVE SUPPLEMENTAL PLAT OF SECTIONS 1 AND 2, TOWNSHIP NO. 7 SOUTH, RANGE NO. 7 EAST, OF THE MICHIGAN MERIDIAN, MICHIGAN, IS DIRECTLY COMPARABLE TO THE FIELD NOTES OF THE SURVEY THEREOF WHICH HAVE BEEN REEXAMINED AND APPROVED.

*Wm. L. Dyer*  
 U. S. SUPERVISOR OF SURVEYS.

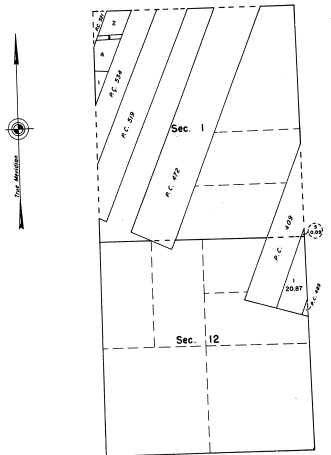
DEPARTMENT OF THE INTERIOR  
 GENERAL LAND OFFICE,  
 WASHINGTON, D. C., AUGUST 29, 1931.

THE SURVEY REPRESENTED BY THIS PLAT HAVING BEEN COMPLETELY EXECUTED IN ACCORDANCE WITH THE REQUIREMENTS OF LAW AND THE REGULATIONS OF THIS OFFICE, IT IS HEREBY ACCEPTED.

*J. B. Coville*  
 ASSISTANT COMMISSIONER.

TOWNSHIP 7 SOUTH, RANGE 7 EAST, OF THE MICHIGAN MERIDIAN, MICHIGAN  
 SUPPLEMENTAL PLAT, SECTIONS 1 AND 12

31-53



This plat, showing new lotting, is based upon the plat approved May 29, 1950, and May 29, 1963.

UNITED STATES DEPARTMENT OF THE INTERIOR  
 BUREAU OF LAND MANAGEMENT  
 Washington, D. C. December 11, 1968

This plat, showing new lotting, is based upon the official records, and having been correctly prepared in accordance with the regulations, is hereby accepted.

For the Director

*R. L. Bacon*

Chief, Division of Engineering