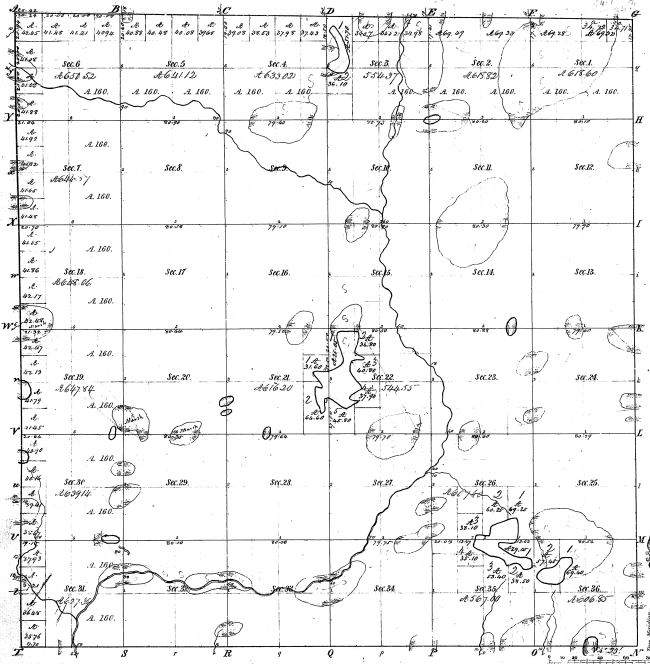


Township N. 9 N., Range N. 7 West Mer. (Mich.)



Mileage of Sections					
Section	Area	Perch	Acres	Perch	Acres
1	100.00	2708	11.11	2708	11.11
2	100.00	2708	11.11	2708	11.11
3	100.00	2708	11.11	2708	11.11
4	100.00	2708	11.11	2708	11.11
5	100.00	2708	11.11	2708	11.11
6	100.00	2708	11.11	2708	11.11
7	100.00	2708	11.11	2708	11.11
8	100.00	2708	11.11	2708	11.11
9	100.00	2708	11.11	2708	11.11
10	100.00	2708	11.11	2708	11.11
11	100.00	2708	11.11	2708	11.11
12	600.00	16272	64.44	16272	64.44
13	100.00	2708	11.11	2708	11.11
14	100.00	2708	11.11	2708	11.11
15	100.00	2708	11.11	2708	11.11
16	100.00	2708	11.11	2708	11.11
17	100.00	2708	11.11	2708	11.11
18	100.00	2708	11.11	2708	11.11
19	100.00	2708	11.11	2708	11.11
20	100.00	2708	11.11	2708	11.11
21	100.00	2708	11.11	2708	11.11
22	100.00	2708	11.11	2708	11.11
23	100.00	2708	11.11	2708	11.11
24	100.00	2708	11.11	2708	11.11
25	100.00	2708	11.11	2708	11.11
26	100.00	2708	11.11	2708	11.11
27	100.00	2708	11.11	2708	11.11
28	100.00	2708	11.11	2708	11.11
29	100.00	2708	11.11	2708	11.11
30	100.00	2708	11.11	2708	11.11
31	100.00	2708	11.11	2708	11.11
32	100.00	2708	11.11	2708	11.11
33	100.00	2708	11.11	2708	11.11
34	100.00	2708	11.11	2708	11.11
35	100.00	2708	11.11	2708	11.11
36	100.00	2708	11.11	2708	11.11

Total number of Acres 23,677.44

Survey Designated	By Whom Surveyed	Date of Contract	Amount of Survey	When Surveyed	Area	Perch	Acres
Township Lines	A. L. Washburn	Feb. 20, 1856	23,677.44	5 th 1857	3 rd 1858	2708	11.11
Subdivisions	James	June 26, 59	16 th 1857	1857	1859	2708	11.11

The above copy of Township, N. 9 North of Range, N. 7 West of Meridian, Michigan, is a true and correct copy of the original map on file in this office, and was prepared and approved by the Surveyor General's Office.

Surveyor General's Office
Grand Rapids, Mich. 4th 11/29

E. J. Raper
Supt. Gen.

67