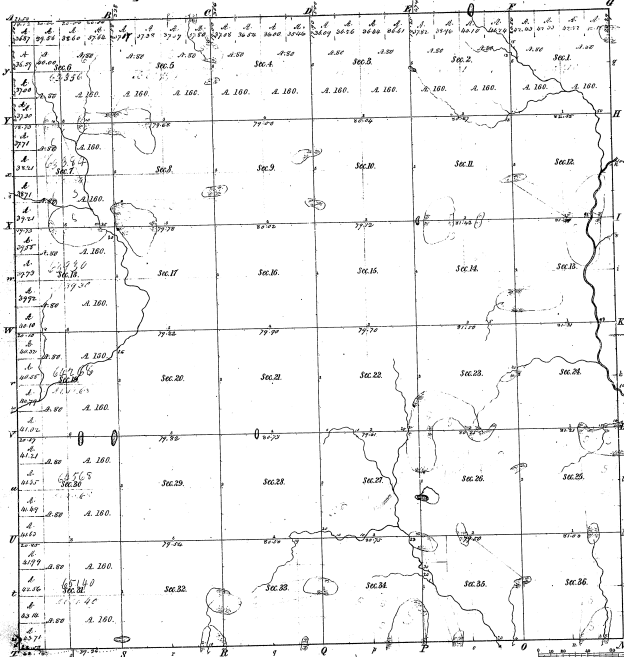


Township N.º 12 N., Range N.º 5 West Mer. (Mich.)



Boundaries of
Pre-1837 Concessions West
Post-1837 Concessions East

12-37

12-37

Total number of Acres 12,672.00

Survey Designated	By Whom Surveyed	Date of Condit.	Amount of Survey	When Surveyed	Amount for and in the "Pre-1837" Concessions
Township Lines	John Black &	Nov. 17, 1838	36.00	1838	36.00
Subdivisions	John Black &	July 2, 1839	54.72	1839	54.72
Township line	P. K. Reynolds	Sept. 23, 1836	6.00	1836	6.00
	John Reynolds	Sept. 12, 1837	12.00	1837	12.00

The above Map of Township N.º 12 North of Range N.º 5 West of Mer. is a true and correct copy of the original map and is a true and correct copy of the survey thereof on file in the Office and has been examined and approved.

Surveyor General's Office
Ann Arbor, May 25, 1839

P. C. Rawley
Surveyor General

12-37