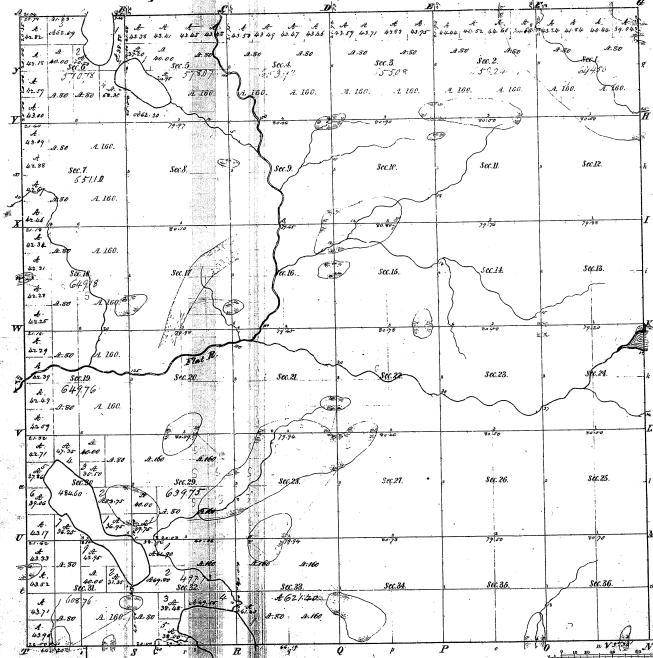


Township 1° 11' N., Range 7° West Mex. (Mich)



Mileage of Lakes			
Point	Course	Dist	Point
1	187° 19'	52.00	2
2	177° 59'	52.00	3
3	170° 00'	52.00	4
4	158° 00'	52.00	5
5	145° 00'	52.00	6
6	130° 00'	52.00	7
7	115° 00'	52.00	8
8	100° 00'	52.00	9
9	85° 00'	52.00	10
10	70° 00'	52.00	11
11	55° 00'	52.00	12
12	40° 00'	52.00	13
13	25° 00'	52.00	14
14	10° 00'	52.00	15
15	0° 00'	52.00	16

12-31

12-39

Total number of Acres 22,642.82

Survey designated	By whom	Approved	Date of Survey	Area	Remarks
Township Survey	John A.	1857	22,642.82	...
...	1858
...	1859

The above map of Township 1° 11' North of Range 7° West of the Principal Meridian, Michigan, is hereby confirmed, in the field notes of the survey, based on the same, which have been examined and approved.

Surveyor General's Office
 Lansing, Michigan
 December 12, 1859

C. P. ...