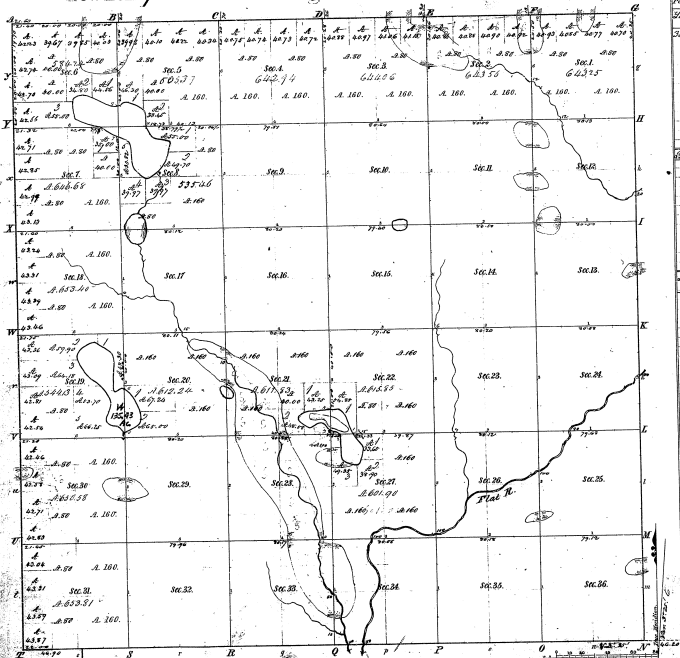


Township N^o 11 N., Range N^o 8 West Mer. (Mich.)



12-40

Mounders of Lake			
Point	Course	Distance	Point
1	S 65.0 E	1.000	2
2	S 75.0 E	1.000	3
3	S 85.0 E	1.000	4
4	S 95.0 E	1.000	5
5	S 5.0 E	1.000	6
6	S 15.0 E	1.000	7
7	S 25.0 E	1.000	8
8	S 35.0 E	1.000	9
9	S 45.0 E	1.000	10
10	S 55.0 E	1.000	11
11	S 65.0 E	1.000	12
12	S 75.0 E	1.000	13
13	S 85.0 E	1.000	14
14	S 95.0 E	1.000	15
15	S 5.0 E	1.000	16
16	S 15.0 E	1.000	17
17	S 25.0 E	1.000	18
18	S 35.0 E	1.000	19
19	S 45.0 E	1.000	20
20	S 55.0 E	1.000	21
21	S 65.0 E	1.000	22
22	S 75.0 E	1.000	23
23	S 85.0 E	1.000	24
24	S 95.0 E	1.000	25
25	S 5.0 E	1.000	26
26	S 15.0 E	1.000	27
27	S 25.0 E	1.000	28
28	S 35.0 E	1.000	29
29	S 45.0 E	1.000	30
30	S 55.0 E	1.000	31
31	S 65.0 E	1.000	32
32	S 75.0 E	1.000	33
33	S 85.0 E	1.000	34
34	S 95.0 E	1.000	35
35	S 5.0 E	1.000	36
36	S 15.0 E	1.000	37
37	S 25.0 E	1.000	38
38	S 35.0 E	1.000	39
39	S 45.0 E	1.000	40
40	S 55.0 E	1.000	41
41	S 65.0 E	1.000	42
42	S 75.0 E	1.000	43
43	S 85.0 E	1.000	44
44	S 95.0 E	1.000	45
45	S 5.0 E	1.000	46
46	S 15.0 E	1.000	47
47	S 25.0 E	1.000	48
48	S 35.0 E	1.000	49
49	S 45.0 E	1.000	50
50	S 55.0 E	1.000	51
51	S 65.0 E	1.000	52
52	S 75.0 E	1.000	53
53	S 85.0 E	1.000	54
54	S 95.0 E	1.000	55
55	S 5.0 E	1.000	56
56	S 15.0 E	1.000	57
57	S 25.0 E	1.000	58
58	S 35.0 E	1.000	59
59	S 45.0 E	1.000	60
60	S 55.0 E	1.000	61
61	S 65.0 E	1.000	62
62	S 75.0 E	1.000	63
63	S 85.0 E	1.000	64
64	S 95.0 E	1.000	65
65	S 5.0 E	1.000	66
66	S 15.0 E	1.000	67
67	S 25.0 E	1.000	68
68	S 35.0 E	1.000	69
69	S 45.0 E	1.000	70
70	S 55.0 E	1.000	71
71	S 65.0 E	1.000	72
72	S 75.0 E	1.000	73
73	S 85.0 E	1.000	74
74	S 95.0 E	1.000	75
75	S 5.0 E	1.000	76
76	S 15.0 E	1.000	77
77	S 25.0 E	1.000	78
78	S 35.0 E	1.000	79
79	S 45.0 E	1.000	80
80	S 55.0 E	1.000	81
81	S 65.0 E	1.000	82
82	S 75.0 E	1.000	83
83	S 85.0 E	1.000	84
84	S 95.0 E	1.000	85
85	S 5.0 E	1.000	86
86	S 15.0 E	1.000	87
87	S 25.0 E	1.000	88
88	S 35.0 E	1.000	89
89	S 45.0 E	1.000	90
90	S 55.0 E	1.000	91
91	S 65.0 E	1.000	92
92	S 75.0 E	1.000	93
93	S 85.0 E	1.000	94
94	S 95.0 E	1.000	95
95	S 5.0 E	1.000	96
96	S 15.0 E	1.000	97
97	S 25.0 E	1.000	98
98	S 35.0 E	1.000	99
99	S 45.0 E	1.000	100

Total number of Acres 22,680.35

Survey designated	By whom surveyed	Date of Survey	Amount of Survey	Plan Returned	Book for and page to which referred
Township 11 N.	Wm. M. Smith	1837	22,680.35	1837	1837
Sections 1 to 36	Wm. M. Smith	1837	22,680.35	1837	1837
Sections 1 to 36	Wm. M. Smith	1837	22,680.35	1837	1837

The above map of Township 11 N. Range 8 West of the 1st Mer. is a copy of the original survey of this township and is a true and correct copy of the same as the same is on file in the office which has been examined and approved by the Surveyor General of Michigan.

Wm. M. Smith
Surveyor General of Michigan

12-40

12-40