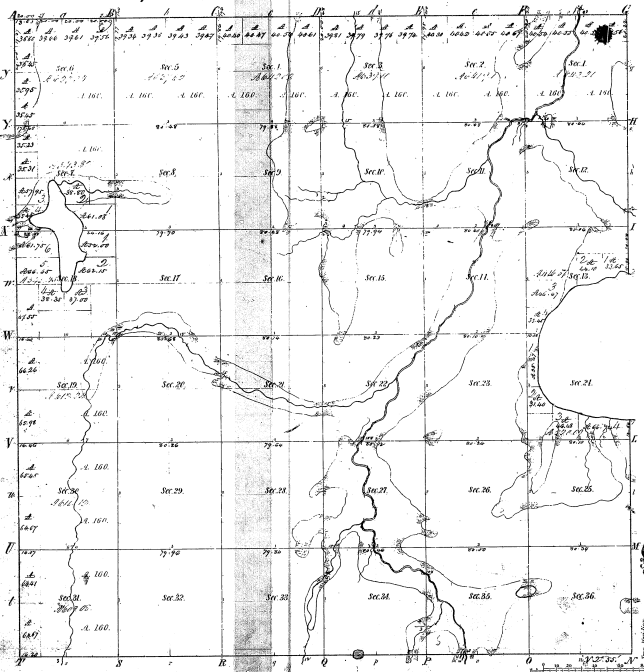


Township 1° 29' N. Range 3° 4' E. Mer. Mich.



Total number of Acres 29,183.99

Survey designated	By Whom Surveyed	Date of Contract	When Surveyed	When Paid and 1/2% on the Surplus
Township 1° 29' N. Range 3° 4' E.	James G. Holden	Jan 12, 1839	5-17-39	5-17-40
			5-17-40	5-17-40

The above Map of Township 1° 29' N. Range 3° 4' E. of the Principal Meridian Michigan is a true and correct copy of the original survey thereof on file in the Office which has been examined and approved.

Surveyor General's Office
 Eastman, Aug 15, 1861

Statement of Land Sales

State of Michigan 1861

21-5

Section	Acres	Price per Acre	Total Price
1	360.00	1.00	360.00
2	360.00	1.00	360.00
3	360.00	1.00	360.00
4	360.00	1.00	360.00
5	360.00	1.00	360.00
6	360.00	1.00	360.00
7	360.00	1.00	360.00
8	360.00	1.00	360.00
9	360.00	1.00	360.00
10	360.00	1.00	360.00
11	360.00	1.00	360.00
12	360.00	1.00	360.00
13	360.00	1.00	360.00
14	360.00	1.00	360.00
15	360.00	1.00	360.00
16	360.00	1.00	360.00
17	360.00	1.00	360.00
18	360.00	1.00	360.00
19	360.00	1.00	360.00
20	360.00	1.00	360.00
21	360.00	1.00	360.00
22	360.00	1.00	360.00
23	360.00	1.00	360.00
24	360.00	1.00	360.00
25	360.00	1.00	360.00
26	360.00	1.00	360.00
27	360.00	1.00	360.00
28	360.00	1.00	360.00
29	360.00	1.00	360.00
30	360.00	1.00	360.00
31	360.00	1.00	360.00
32	360.00	1.00	360.00
33	360.00	1.00	360.00
34	360.00	1.00	360.00
35	360.00	1.00	360.00
36	360.00	1.00	360.00

James G. Holden
 Surveyor General