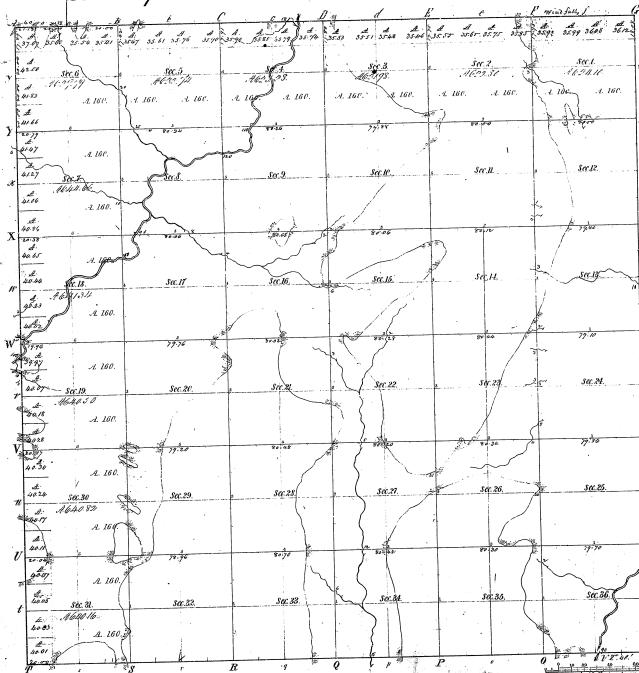


Township 1° 50' N. Range 1° 4' E. - Mer. Mich.



Meanders of

| | | | |
|-------------------|-------------------|-------------------|-------------------|
| Point Course 1874 | Point Course 1874 | Point Course 1874 | Point Course 1874 |
| | | | |
| | | | |
| | | | |
| | | | |
| | | | |
| | | | |
| | | | |
| | | | |
| | | | |
| | | | |
| | | | |
| | | | |
| | | | |
| | | | |
| | | | |
| | | | |
| | | | |
| | | | |
| | | | |
| | | | |
| | | | |

21-4

21-4

Total number of Acres 26252.17

| Township designated | By whom surveyed | Date of Contract | Amount of Survey | How Surveyed | Range 1 st to and 1 st of the Section |
|--|------------------|---------------------------|--|------------------|---|
| Township 1 st 50 th N. | Geo. S. Selden | May 21 st 1854 | 36 | 1/2 ^d | 8 th - 18 th |
| Subdivisions | None | 56 | 66 21 st - 57 th | 1/2 ^d | 24 th - 36 th |

The above Map of Township 1° 50' N. Range 1° 4' E. of the Principal Meridian Michigan is strictly conformable to the full notes of the survey thereof filed in this Office which have been examined and approved.

Surveyor General's Office
Cassville, Mo. 2^d 1850

[Signature]