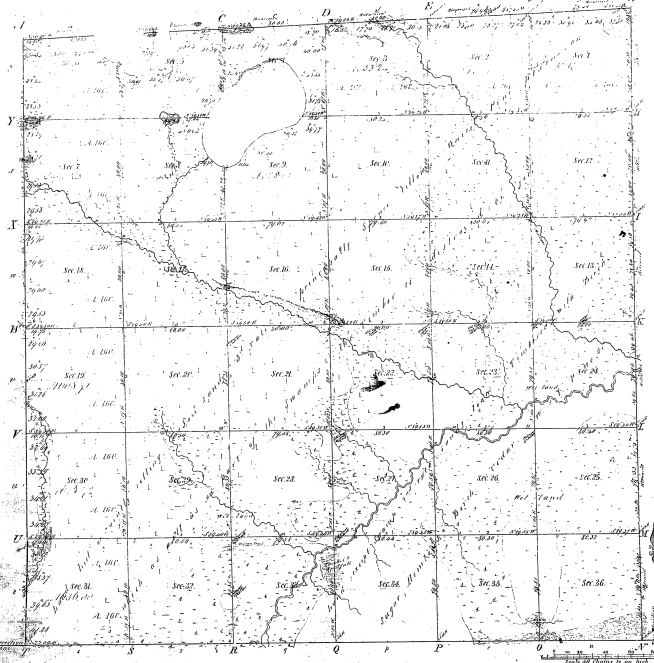
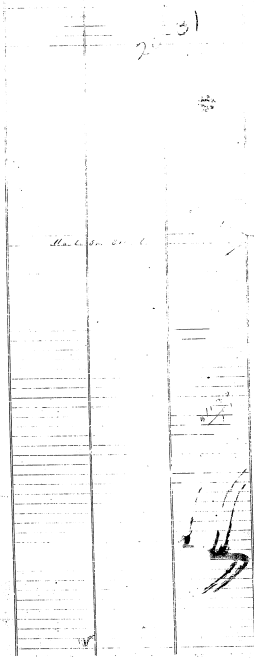


- Recovery
 Township, N^o 31, R^o Range, V^o 4 E.
 Mer. Mich.



Monrovia
 Public Lands Office, Bureau of Land Management, Washington, D.C.



20-31

Total number of Acres 21,907 1/2

Survey Designated	By Whom Surveyed	Date of Contract	Amount of Survey	When Surveyed	When the same was returned to the Survey Office
Township	Buller & Co.	March 19 th 1855	26,187 1/2	1 st June 1855	
Subdivisions	Buller & Co.	May 26 th 1855	62.40	3 rd June 1855	
8 Homestead Allowances	Buller & Co.	May 26 th 1855	4.70	3 rd June 1855	

The above Map of Township, N^o 31, R^o Range, V^o 4 E. is a Copy of the Principal Meridian of Michigan, as shown on the maps to the field notes of the survey thereon, as far as they have been examined and approved.
 Surveyor General's Office
 Detroit, March 11th 1855
Saml. Chapman
 Surveyor General

Cover Copy made

Cover Copy made