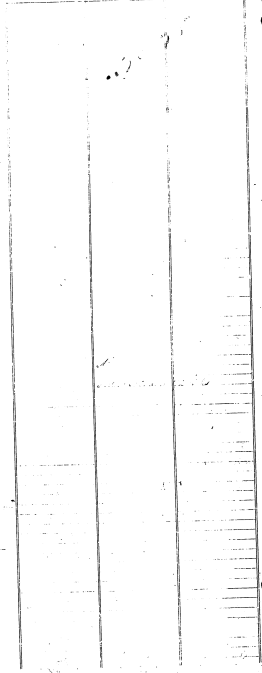
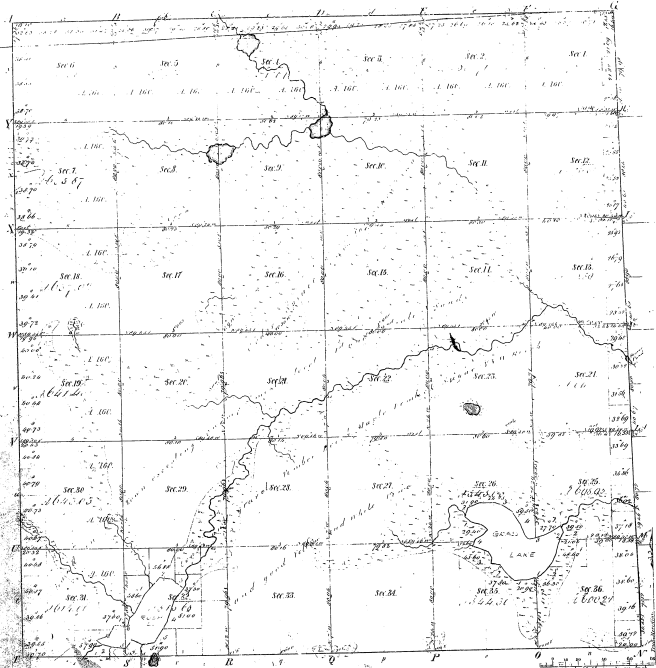


Township 17 32 N Range 17 3 E Men. Mich.

Boundaries of  
 Post Office Areas "A" & "B" from a "A" & "B" Post Office Areas "A" & "B"



20-25

Total number of Acres 100 1/4 60

Tract Designated	By Whom Surveyed	Date of Contract	Amount of Survey	When Surveyed	Remarks
Subdivisions	U.S. Army	April 18 1850	100 1/4	1850	
Subdivisions	U.S. Army	April 18 1850	100 1/4	1850	
Subdivisions	U.S. Army	April 18 1850	100 1/4	1850	

The above map of Township 17 32 North of Range 17 3 East of the  
 Principal Meridian Michigan is  
 a true and correct copy of the  
 original map on file in the office  
 of the Survey General Office  
 Detroit March 22 1857  
 D. B. S. 1857

D. B. S.  
 Survey Genl.