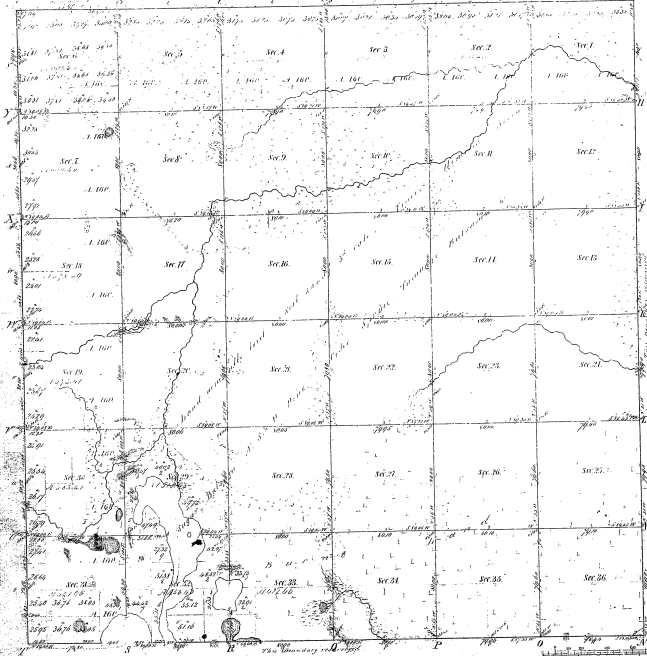


Township 19° 32' N. Range 19° E. Mer. Mich.



Memorandum of  
 Findings of  
 Field Notes  
 1858  
 1859  
 1860  
 1861  
 1862  
 1863  
 1864  
 1865  
 1866  
 1867  
 1868  
 1869  
 1870  
 1871  
 1872  
 1873  
 1874  
 1875  
 1876  
 1877  
 1878  
 1879  
 1880  
 1881  
 1882  
 1883  
 1884  
 1885  
 1886  
 1887  
 1888  
 1889  
 1890  
 1891  
 1892  
 1893  
 1894  
 1895  
 1896  
 1897  
 1898  
 1899  
 1900

Total number of Acres 7,157.77

Survey Designated	By Whom Surveyed	Date of Conduct	Amount of Survey	Plan Surveyed	Number of Acres
Subdivisions	Charles K. ...	July 18, 1858	6,357.77	1/4 Sec. 26, 1/4 Sec. 27, 1/4 Sec. 28, 1/4 Sec. 29, 1/4 Sec. 30, 1/4 Sec. 31, 1/4 Sec. 32, 1/4 Sec. 33, 1/4 Sec. 34, 1/4 Sec. 35, 1/4 Sec. 36	6,357.77
Amount of land					

The above map of Township 19° 32' North of Range 19° East of the Principal Meridian of Michigan, is drawn conformably to the field notes of the survey having for its basis the official survey of the ground.

Surveyor General Office  
 Charles L. ...  
 1858

TOWNSHIP 32 NORTH, RANGE 4 EAST, MICHIGAN MERIDIAN, MICHIGAN  
SURVEY OF ISLAND IN SECTIONS 29 AND 32

20-24②

Field Notes of Survey

Surveys as represented hereon were executed with a Gurley solar transit, constructed in accordance with Bureau of Land Management specifications, which was in good condition and was placed in satisfactory adjustment prior to undertaking this work. Directions of all lines refer to the true meridian and were determined by the solar transit method or by prolongation of celestial observations. Distances are expressed in chains, measured on the slope, reduced to horizontal equivalents.

The point for the M.C. of secs. 29 and 32, on E. shore of Long Lake, was pointed out by Mr. Alfred Willard, adjoining land owner, and is mhd. with a concrete monument, 4 ins. diam., projecting 4 ins. above ground, with iron rod in center; the point was not recommended.

from which

A red oak, 6 ins. diam., bears N. 30 $\frac{1}{2}$ ° E., 31 $\frac{1}{2}$  lks. dist., not mhd.  
A Norway pine, 8 ins. diam., bears S. 67 $\frac{1}{2}$ ° E., 62 lks. dist., not mhd.  
Thence, S. 81° 08' W., on a true line bet. secs. 29 and 32, over Long Lake; distance obtained by triangulation.

21.11 E. shore of island and point for M.C.

Set a regulation iron post, 2 $\frac{1}{2}$  ins. diam., with brass cap mhd.



from which

A Norway pine, 12 ins. diam., bears S. 11 $\frac{1}{2}$ ° W., 31 lks. dist., mhd.  
T 32 N 845 S29 MC BT.  
A cedar, 4 ins. diam., bears N. 71 $\frac{1}{2}$ ° W., 60 $\frac{1}{2}$  lks. dist., mhd. S29 MC BT.  
Thence crossing island, through timber and undergrowth, with same line and measurement.

22.53 W. Shore of island and point for M.C.

Set a regulation iron post, 2 $\frac{1}{2}$  ins. diam., with brass cap mhd.



from which

A white pine, 8 ins. diam., bears N. 30° E., 23 lks. dist., mhd.  
T 32 N 845 S29 MC BT.  
A cedar, 6 ins. diam., bears S. 6 $\frac{1}{2}$ ° W., 18 $\frac{1}{2}$  lks. dist., mhd.  
T 32 N 845 S29 MC BT.

Thence crossing Long Lake, with same line and measurement; distance obtained by triangulation.  
34.12 The point for M. C. of secs. 29 and 32, on W. shore of Long Lake, is mhd. with a concrete monument, 4 ins. diam., with iron rod in center; the point was not recommended.

from which

A red oak, 10 ins. diam., bears S. 4 $\frac{1}{2}$ ° W., 36 $\frac{1}{2}$  lks. dist.,  
a yard tree with mhd. 8 ft. Not additionally mhd.  
A red oak, 9 ins. diam., bears N. 48° W., 66 lks. dist.,  
a yard tree, not mhd.

Meanders of Island

From the M.C. of secs. 29 and 32, on E. shore of island; thence with meanders of island, in sec. 29; along a well-defined shore line, at foot of bluff, with timber and undergrowth to left.

N. 69° 02' W., 1.60 ch.  
S. 25° 48' W., 1.00 ch.  
S. 9° 30' W., 0.61 ch. The M.C. of secs. 29 and 32 on

W. shore of island.

Thence in sec. 32.

South, 0.60 ch.  
S. 79° 30' E., 1.40 chs.  
N. 45° 00' E., 1.30 chs.  
N. 79° 30' W., 0.82 ch. The M.C. of secs. 29 and 32 on

E. shore of island and place of beginning.

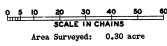
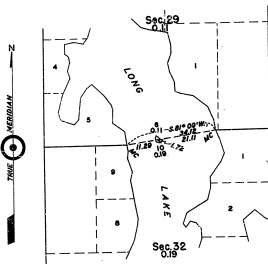
General Description

The island is of sandy and stony loam formation, similar to the mainland shores, and reaches approximately 1 $\frac{1}{2}$  feet above the water level of Long Lake.

The timber thereon consists of birch, cedar, white pine and Norway pine, ranging in size from 4 to 18 ins. diam., there are several old stumps, dead for many years, that reach to 24 ins. diam. There is a cist of silted around the island.

There are no improvements on the island.  
The formation of the island, of stony loam, its similarity to the lands surveyed in the original work, and the timber thereon, together with its sitting in the rearways of 1857, attest to the fact that the island was in existence in 1837, when Michigan was admitted into the Union, and has been in existence at all subsequent dates, and therefore has the status of public land.

The island is over 50% upland in character.



Note: Due to apparent but unverified distortions in the boundaries of secs. 29 and 32, the section lines are not shown in their entirety.

UNITED STATES DEPARTMENT OF THE INTERIOR  
BUREAU OF LAND MANAGEMENT  
Washington, D. C. August 4, 1959

This plat is strictly conformable to the above field notes of survey, which have been critically examined and found correct, and are hereby approved, and the survey, having been properly executed in accordance with the requirements of law and the regulations of this Bureau, is hereby accepted.

For the Director  
*Earl G. Barrington*  
Chief Engineering Staff Officer

I HEREBY CERTIFY UPON HONOR that, in pursuance of Special Instructions for Group 17, Michigan, bearing date of August 5, 1908, and Assignment Instructions dated August 5, 1908, I surveyed on September 12, 1908, the island in Long Lake, secs. 29 and 32, T. 32 N., R. 4 E., Michigan Meridian, in the State of Michigan, which is represented by this diagram and field notes of survey, and that said survey has been made in strict conformity with said instructions, the Manual of Instructions for Survey of the Public Lands of the United States, and in the specific manner described in the notes of survey.

*Hugh B. Crawford*

PLAT 19, 1959.

Hugh B. Crawford  
Cadastral Surveyor

This plat represents the complete record of survey.