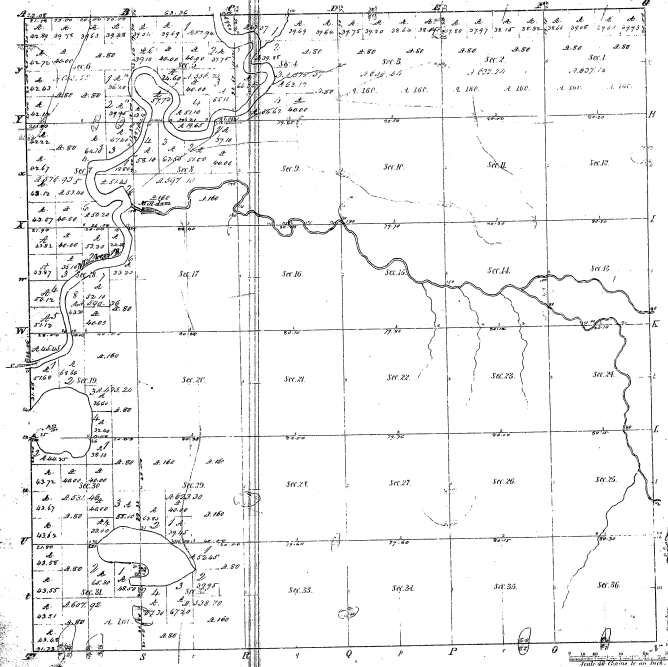


Township 1° 12' N., Range 1° 11' West Mer. (Mich.)



Number of Acres	Value	Value	Value	Value
1	1.00	1.00	1.00	1.00
2	1.00	1.00	1.00	1.00
3	1.00	1.00	1.00	1.00
4	1.00	1.00	1.00	1.00
5	1.00	1.00	1.00	1.00
6	1.00	1.00	1.00	1.00
7	1.00	1.00	1.00	1.00
8	1.00	1.00	1.00	1.00
9	1.00	1.00	1.00	1.00
10	1.00	1.00	1.00	1.00
11	1.00	1.00	1.00	1.00
12	1.00	1.00	1.00	1.00
13	1.00	1.00	1.00	1.00
14	1.00	1.00	1.00	1.00
15	1.00	1.00	1.00	1.00
16	1.00	1.00	1.00	1.00
17	1.00	1.00	1.00	1.00
18	1.00	1.00	1.00	1.00
19	1.00	1.00	1.00	1.00
20	1.00	1.00	1.00	1.00
21	1.00	1.00	1.00	1.00
22	1.00	1.00	1.00	1.00
23	1.00	1.00	1.00	1.00
24	1.00	1.00	1.00	1.00
25	1.00	1.00	1.00	1.00
26	1.00	1.00	1.00	1.00
27	1.00	1.00	1.00	1.00
28	1.00	1.00	1.00	1.00
29	1.00	1.00	1.00	1.00
30	1.00	1.00	1.00	1.00
31	1.00	1.00	1.00	1.00
32	1.00	1.00	1.00	1.00
33	1.00	1.00	1.00	1.00
34	1.00	1.00	1.00	1.00
35	1.00	1.00	1.00	1.00
36	1.00	1.00	1.00	1.00

11-34

Total number of Acres 36.00

Tract Designated	By Whom Surveyed	Date of Conveyance	Amount of Survey	When Surveyed	When Recorded	Value of Land	Value of Improvements	Total Value
Tract No. 1	John J. Sullivan	Jan 12, 1887	36.00	1887	1887	36.00	0.00	36.00
Tract No. 2	John J. Sullivan	Jan 12, 1887	36.00	1887	1887	36.00	0.00	36.00

This Report, Map of Township 1° 12' North of Range 1° 11' West of the Principal Meridian Michigan is a true and correct copy of the original survey as shown on the office records of the Surveyor General of Michigan.

Surveyor General of Michigan
 Edmund S. Hildner

C. Sullivan