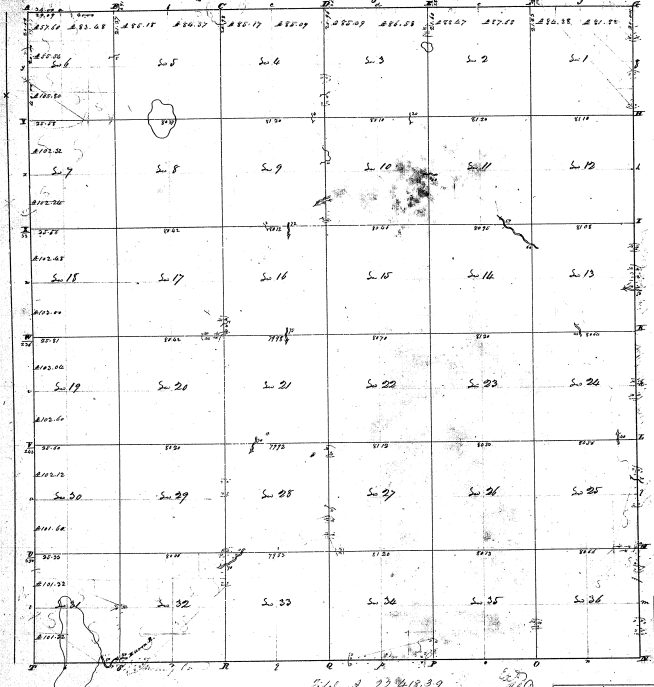


Township N.E. 104E, Range N.E. 104E, 6th of 10th (North. Tex)



25-35

28-35

Sub. of 224618.39

Pursuant to a contract with and instruction from Edward Duffin, Surveyor General of the United States, bearing date the day of _____ I have advanced this and surveyed the above described lot so as to certify that it has such number and bears its both material and artificial as are represented on said plat and recorded in the office under the title of and returned with this plat into the Surveyor General's office. Certified this day of April 1883

Wm. Hampler, Det.