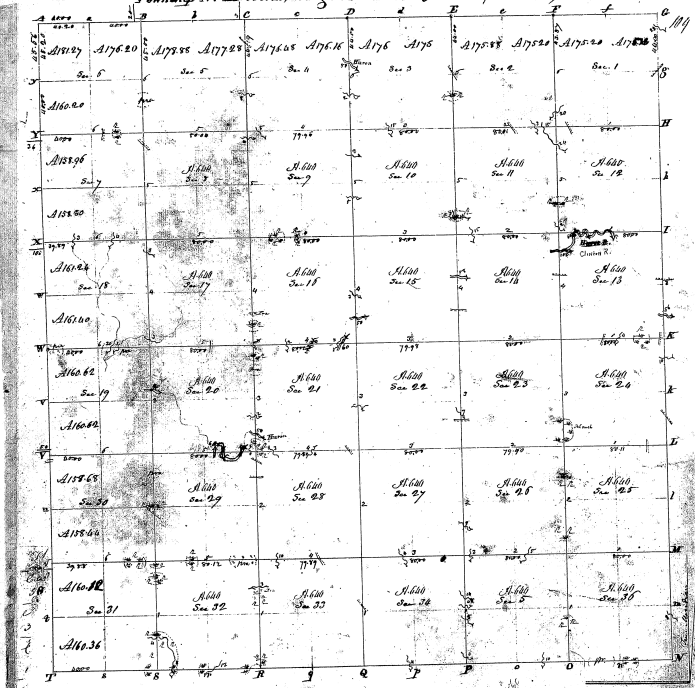


Township N. 21 North, Range N. 11 East of the Mer. (Mich. Ter.)



27-30

00-12

Pursuant to a contract with instructions from Edward Coffin Esq. Surveyor General of the State of Michigan I have measured and laid out and surveyed the above described township and do hereby certify that it has such marks & corners both natural and artificial as are represented on and in the above description the field notes made thereof and returned with this plat into the Surveyor General's office.

Certified this 14th day of September 1854

Wm. H. Miller S. G.