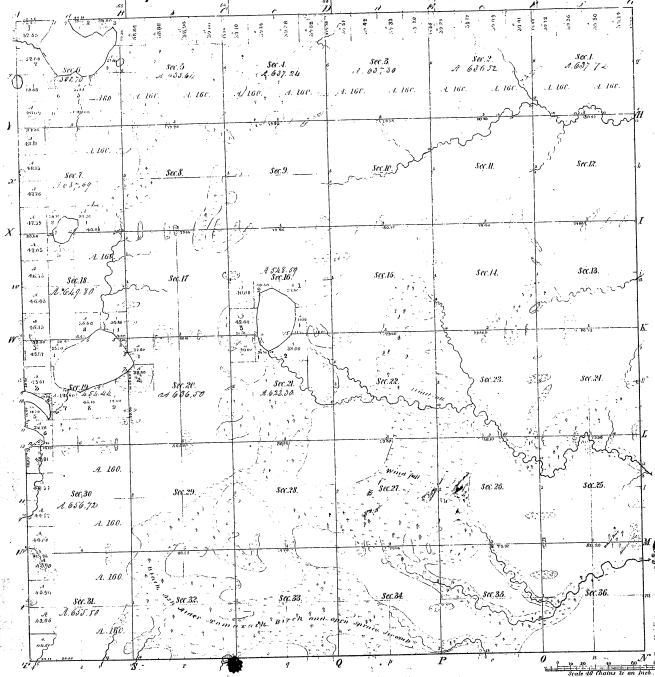


Re Survey
Township 1° 21' N. Range 3° 46' W. Mer. Mich.



Total number of Acres **92646.16**

Survey Designated	By Whom Surveyed	Date of Contract	Amount of Survey	When Surveyed	Where of use and to what the Survey was made
Township Lines	John B. Wilson	July 19 1825	M. 65 2 1/2	1825	1158
Subdivisions	John B. Wilson	March 21 1826	28 8 1/2	1826	1158

21-37

The above Map of Township 1° 21' North of Range 3° 46' West of the Principal Meridian, Michigan, is hereby returned to the field notes of the survey thereon file 21, the original of which has been examined and approved.

Surveyor General's Office
 Detroit July 27th 1866
 Lucius Lyon, Surveyor