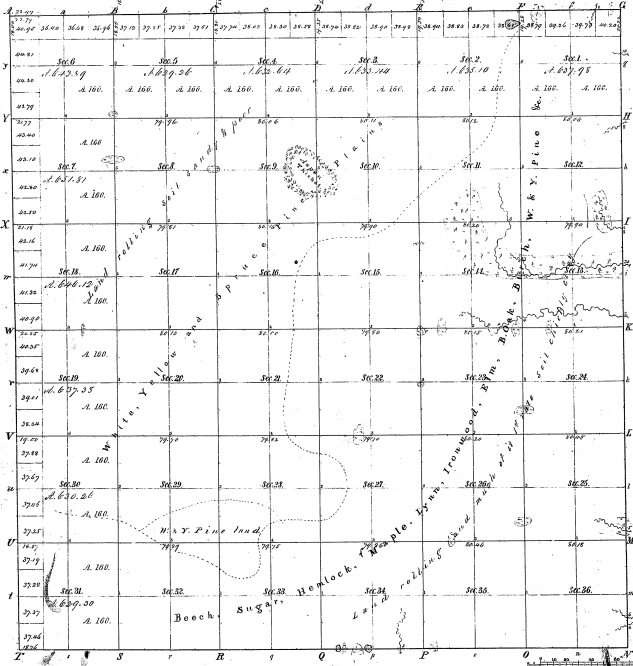


Re Survey

Township N^o 25 N. Range N^o 4 W. Mer. Mich



Number of
Acres

Section	Acres
1	
2	
3	
4	
5	
6	
7	
8	
9	
10	
11	
12	
13	
14	
15	
16	
17	
18	
19	
20	
21	
22	
23	
24	
25	
26	

21-21

21-21

Total number of Acres 25000.17

Survey described	By Whom Surveyed	Date of Contract	Amount of Survey	When Surveyed	When Made	How far and in what direction from the Section Corner
Township West Subdivisions	Leard & Johnson	July 16, 1848	25,000.17	5-7-1853		
	John Mullen	July 16, 1848	57,76.25	5-7-1848		

The above Map of Township N^o 25 North of Range N^o 4 East of the Principal Meridian is a true and correct copy of the field notes of the survey thereof on file in this Office, which have been examined and approved.

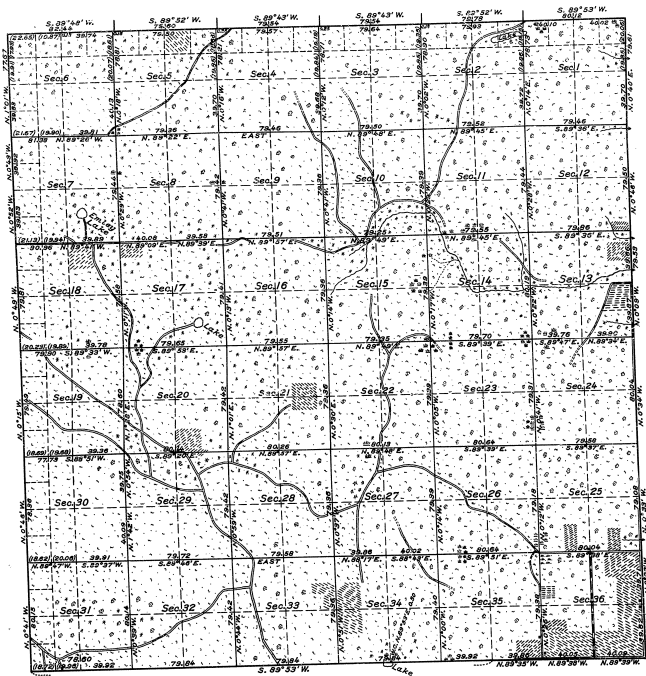
Surveyor General's Office,
Detroit August 2^d 1856

Resides (Signature)

TOWNSHIP No.25 NORTH, RANGE No.4 EAST, MICHIGAN MERIDIAN, MICHIGAN.
DEPENDENT RESERVEUY.

21-21

21-21-3



MEMORANDUM.

THIS PLAT OF THE RESURVEY OF TOWNSHIP 25 NORTH, RANGE 4 EAST, DELINEATES A RETRACEMENT AND REESTABLISHMENT OF THE LINES OF THE ORIGINAL SURVEY AS SHOWN UPON THE PLAT APPROVED AUGUST 4, 1845, IN THEIR TRUE ORIGINAL POSITION ACCORDING TO THE BEST AVAILABLE EVIDENCE OF THE POSITION OF THE ORIGINAL CORNERS. ALL DIFFERENCES BETWEEN THE MEASUREMENTS SHOWN ON THE ORIGINAL PLAT AND THOSE DERIVED IN THE RETRACEMENT HAVE BEEN DISTRIBUTED PROPORTIONALLY BETWEEN ACCEPTED CORNERS IN ACCORDANCE WITH SURVEYING RULES. REFERENCE WILL BE MADE TO THE ORIGINAL PLAT FOR THE SHOWING OF AREAS AND MORE DETAILED DESCRIPTIONS OF THE VARIOUS SMALLER SUBDIVISIONS.

OFFICE OF U. S. SUPERVISOR OF SURVEYS.
DENVER, COLORADO, APRIL 24, 1931.

THE ABOVE PLAT OF TOWNSHIP NO. 25 NORTH, RANGE NO. 4 EAST, OF THE MICHIGAN MERIDIAN, IN THE STATE OF MICHIGAN, IS STRICTLY CONFORMABLE TO THE FIELD NOTES OF THE SURVEY THEREOF, WHICH HAVE BEEN EXAMINED AND APPROVED.

Superintendent
U. S. SUPERVISOR OF SURVEYS.

DEPARTMENT OF THE INTERIOR.
GENERAL LAND OFFICE.

WASHINGTON, D. C., MAY 29, 1932.

THE SURVEY REPRESENTED BY THIS PLAT, HAVING BEEN CORRECTLY EXECUTED IN ACCORDANCE WITH THE REQUIREMENTS OF LAW AND THE REGULATIONS OF THIS OFFICE, IS HEREBY APPROVED.

Assistant Commissioner
ASSISTANT COMMISSIONER.

SCALE: 40 CHAINS TO AN INCH.

LINES DESIGNATED	BY WHOM SURVEYED	GROUP		MILEAGE	WHEN SURVEYED		
		NO.	DATE			WLS.	CHS.
EXTERIOR	GUY R. VEAL, U. S. C. ENGINEER.	17	JUNE 7, 1928.	23	71.35	JUNE 29, 1929.	AUGUST 17, 1929.
SUBDIVISIONAL	HUGH B. CRAWFORD, U. S. TRANSITMAN.			59	50.56		