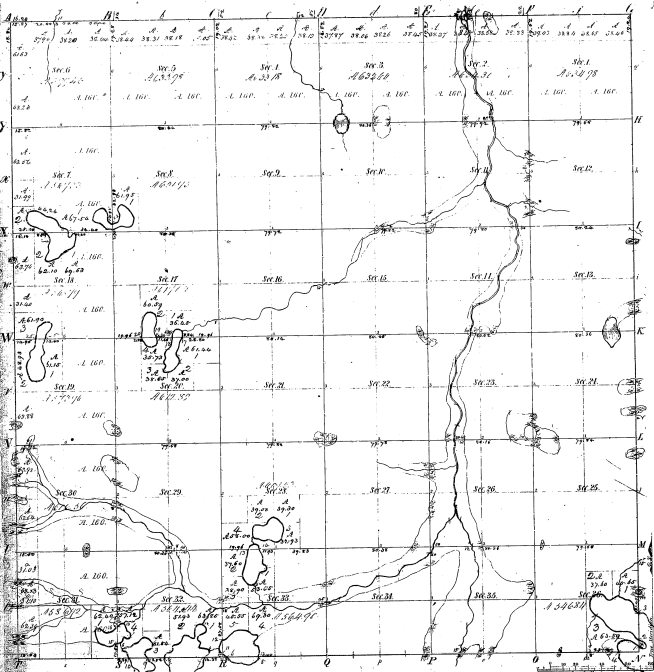


Township 1° 25' S., Range 1° 4' E., Mer. Mich.



Total number of Acres 66,325.33

Survey Designated	By Whom	Date of Contract	Amount of Survey	When Surveyed	When the map was filed in the Recorder's office
Ownership	Wm. C. ...	Nov. 19, 1839	52,879.25	1839	5-27-1840
Ownership	...	...	...	...	...

The above copy of Survey No. 25 N. of Range 1° 4' East of the Principal Meridian of Michigan is a truly correct and approved copy of the survey thereof, as the same has been examined and approved.

Surveyor General's Office  
Grand Rapids, 10th April 1840.

Number of acres, 3600

Section	Acres	Owner
1	3600	...
2	3600	...
3	3600	...
4	3600	...
5	3600	...
6	3600	...
7	3600	...
8	3600	...
9	3600	...
10	3600	...
11	3600	...
12	3600	...
13	3600	...
14	3600	...
15	3600	...
16	3600	...
17	3600	...
18	3600	...
19	3600	...
20	3600	...
21	3600	...
22	3600	...
23	3600	...
24	3600	...
25	3600	...
26	3600	...
27	3600	...
28	3600	...
29	3600	...
30	3600	...
31	3600	...
32	3600	...
33	3600	...
34	3600	...
35	3600	...
36	3600	...

21-12