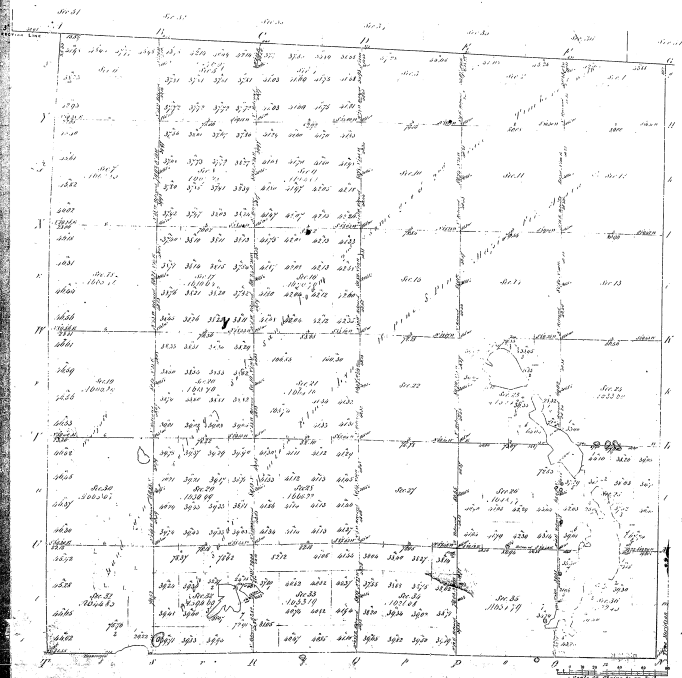


Retracing and Resurvey  
Township N<sup>o</sup> 30 N. Range N<sup>o</sup> 4 W.

Mer. Mich.



Map of the Township of N<sup>o</sup> 30 N. Range N<sup>o</sup> 4 W. Mer. Mich. showing the location of the sections and the location of the road.

1	2	3	4	5	6	7	8	9	10	11	12	13	14	15	16	17	18	19	20	21	22	23	24	25	26	27	28	29	30	31	32	33	34	35	36

Members 10 miles 43 Chans 24 bars

2400 feet above sea level and from the sea level

Total number of Acres 160000			
Original Survey	Resurvey	Acres of Original	Acres of Resurvey
160000	160000	160000	160000

All these sections are 36 acres each. The total of the township is 160000 acres. The original survey was made in 1836 and the resurvey was made in 1880. The original survey was made by John Smith and the resurvey was made by John Smith and John Doe.

1880

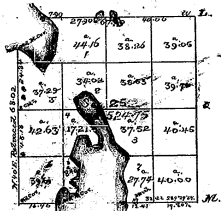
1880

State Land Office

(8)

14-1

DIAGRAM  
OF  
SECTION 25  
T. 30 N. R. 4 W. MICH.



Department of the Interior  
General Land Office  
December 24, 1896.

I hereby certify that the above is a plat of the subdivisions made in accordance with Section 2419-10-5, Revised Statutes of the South half of the South East fractional quarter and East half of the South West fractional quarter of Sec. 25, T. 30 North of Range No. 4 West Michigan Meridian in the State of Michigan.

*J. McWilliams*  
Commissioner  
Michigan Surveyor General  
of Michigan.

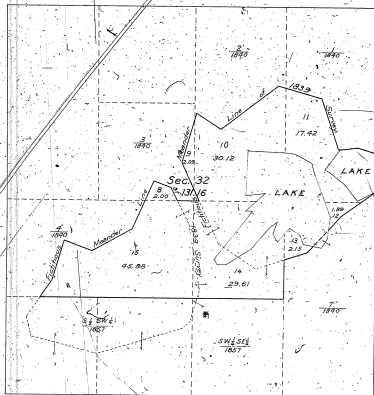
X

SUPPLEMENTAL PLAT

of  
Section 32, T. 30 N., R. 4 W., Michigan Meridian,  
MICHIGAN.

Scale: 1 inch = 10 acres

B. letter 133494 E. F. M.  
dated Jan. 15, 1932, approved  
by Assistant Secretary  
Jan. 19, 1932.



Washington, D. C., June 10, 1932.

The undersigned Agency certifies that this supplemental plat has been prepared under the general direction in accordance with the field notes of the surveys executed in 1929 and 1930, which have been verified and lottings amended without additional field work.

Absolute Supervisor of Surveys.

MEMORANDUM

The subdivisions referring to the plats of 1930 and 1931 are designated by the original description and the year in which the surveys were approved, in accordance with act standing disposals.

Lots 1, 2, 3, 4 and 7 are patented according to the plat approved March 27, 1930.  
Lots 5, 6, 8, 9 and 10 are patented according to the plat approved August 21, 1931.  
Lots 1, 2, 3, 4, 7, 8, 9, 10, 11, 12, 13, 14 and 15 are revised lottings of lands subject to disposal.  
Area of land subject to disposal = 531.16 acres.

DEPARTMENT OF THE INTERIOR  
GENERAL LAND OFFICE

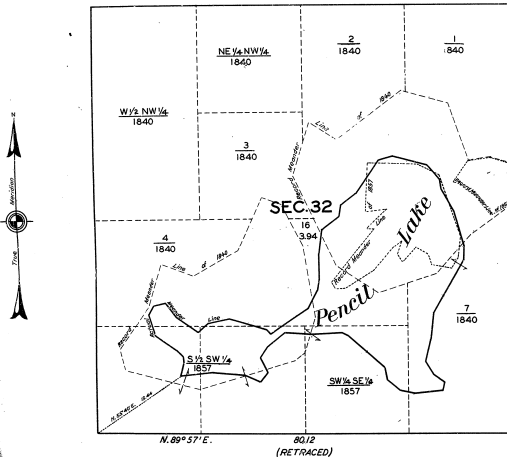
Washington, D. C., June 14, 1932.

I hereby certify that this supplemental plat of Section 32, T. 30 N., R. 4 W., Mich. Mer. is in accordance with the provisions of Section 265, U.S. Revised Statutes, in strictly conformable to the aforesaid field notes of the surveys executed in 1929 and 1930, as shown upon the plat approved March 27, 1930 and August 21, 1931, and the amended lottings contained on this supplemental plat are hereby approved.

Commissioner and ex officio  
Assistant Secretary

TOWNSHIP NO. 30 NORTH, RANGE NO. 4 WEST OF THE MICHIGAN MERIDIAN, MICHIGAN.  
 SUPPLEMENTAL PLAT OF SECTION 32.

SCALE: 10 CHAINS TO AN INCH.



MEMORANDUM.

THIS SUPPLEMENTAL PLAT OF SECTION 32, BASED UPON THE PLATS APPROVED MARCH 27, 1840 AND AUGUST 24, 1857, AND UPON THE ACTUAL MEASUREMENTS OF PENCIL LAKE, HAS BEEN PREPARED TO AFFORD DESIGNATION AND AREA FOR THE REMAINING PUBLIC LANDS IN THE SECTION, FORSAKEN TO AVOIDANCE CONTAINED IN GENERAL LAND OFFICE LETTER 1354674, PP., DATED JANUARY 19, 1932, WHICH BEARS DEPARTMENTAL APPROVAL UNDER DATE OF JANUARY 19, 1932.

THE PATENTED SUBDIVISIONS ARE SHOWN IN THEIR PROPER POSITIONS WITH DESIGNATIONS REFERRED TO THE PLAT OF SECTION THE PATENTED THEREBAND, THE DATE OF SAID PLAT BEING INDICATED BELOW THE DESIGNATION.

LAND SUBJECT TO DISPOSAL: LOT 16, 3.94 ACRES.

OFFICE OF U. S. SUPERVISOR OF SURVEYS,

DENVER, COLORADO, FEBRUARY 11, 1932.

THE ABOVE SUPPLEMENTAL PLAT OF SECTION 32, TOWNSHIP NO. 30 NORTH, RANGE NO. 4 WEST, OF THE MICHIGAN MERIDIAN, MICHIGAN, IS HEREBY COM-  
 PENSABLE TO THE FIELD NOTES OF THE SURVEY THEREOF WHICH HAVE BEEN  
 EXAMINED AND APPROVED.

*Barth S. Linn*  
 U. S. SUPERVISOR OF SURVEYS.

DEPARTMENT OF THE INTERIOR

GENERAL LAND OFFICE,

WASHINGTON, D. C., FEBRUARY 16, 1932.

THE SURVEY REPRESENTED BY THIS PLAT HAVING BEEN CORRECTLY EXECUTED  
 IN ACCORDANCE WITH THE REQUIREMENTS OF LAW AND THE REGULATIONS OF THIS  
 OFFICE, IS HEREBY ACCEPTED.

*W. C. McCall*  
 ASSISTANT COMMISSIONER

LINES DESIGNATED	BY WHOM SURVEYED	GROUP NO.	GROUP DATE	MILKSON M.S. CHS.	WHEN SURVEYED BEGUN	WHEN SURVEYED COMPLETED
RETRACEMENTS	JOSEPH C. CHAMBERLAIN	29	SEPTEMBER 2, 1857	1 0 12	SEPTEMBER 21, 1857	SEPTEMBER 25, 1857
CONNECTIONS	V. S. C. ENGINEER.		1931.	0 15-44	1931.	1931.
MEASUREMENTS				2 45-70		

TOWNSHIP 30 NORTH, RANGE 4 WEST, MICHIGAN MERIDIAN, MICHIGAN  
SURVEY OF ISLAND IN SECTIONS 25 AND 36

Field Notes of Survey

Surveys as represented herein were executed with a Gurley solar transit, constructed in accordance with Bureau of Land Management specifications, which transit was in good condition and was placed in satisfactory adjustment prior to undertaking this work. Directions of all lines refer to the true meridian and were determined by the solar transit method or by prolongation of celestial observations. Distances are expressed in chains, measured on the slope, reduced to horizontal equivalents.

The point for N.C. of secs. 25 and 36, on E. shore of Manuka Lake, was determined from remains of original H.E.'s a stump hole, N. 87 $^{\circ}$  E., 138 lks. (Record: N. 85 $^{\circ}$  E.); a white pine stump, 20 ins. diam., S. 53 $^{\circ}$  E., 154 lks. (Record: S. 51 $^{\circ}$  E.).

At corner point

Set a regulation brass tablet,  $\frac{3}{8}$  ins. diam., in a tile, 24 ins. long, 4 ins. diam., filled with concrete, 18 ins. in ground, with top md.

	7 30 N
	S 25
M	S 36
	E 4 W
	1958

from which

A white pine, 13 ins. diam., bears N. 22 $^{\circ}$  E., 20 $\frac{1}{2}$  lks. dist., md. T30N E4W S36 MC FT.  
A Norway pine, 7 ins. diam., bears S. 36 $^{\circ}$  E., 52 lks. dist., md. T30N E4W S36 MC FT.

Thence, S. 89 $^{\circ}$  59' W., bet. secs. 25 and 36, crossing Manuka Lake; distance obtained by chaining.

S.E. shore of island and point for N.C.

Set a regulation iron post,  $\frac{3}{8}$  ins. diam., with brass cap md.

	7 30 N
	S 25
M	S 36
	E 4 W
	1958

from which

A jack pine, 6 ins. diam., bears S. 74 $\frac{1}{2}$  W., 56 lks. dist., md. T30N E4W S36 MC FT.  
A white pine, 7 ins. diam., bears N. 47 $\frac{1}{2}$  W., 84 lks. dist., md. T30N E4W S36 MC FT.

Thence crossing island; continue same course and distance.

7.70 A white pine, 8 ins. diam., on line.

10.70 W. shore of island and point for N.C.

Set a regulation iron post,  $\frac{3}{8}$  ins. diam., with brass cap md.

	7 30 N
	S 25
M	S 36
	E 4 W
	1958

from which

A birch, 7 ins. diam., bears N. 23 $\frac{1}{2}$  E., 55 lks. dist., md. T30N E4W S36 MC FT.  
A white pine, 5 ins. diam., bears S. 74 $\frac{1}{2}$  W., 45 lks. dist., md. T30N E4W S36 MC FT.

Thence over Manuka Lake; continue same course and measurement. Distance obtained by triangulation.

29.95 W. beach of Lake.

30.76 The point for N.C. of secs. 25 and 36, on W. shore of Manuka Lake, md. by an iron rod, recognized and accepted as the N.C.

At the corner point

Set a regulation brass tablet,  $\frac{3}{8}$  ins. diam., in a tile, 24 ins. long, 4 ins. diam., filled with concrete, 16 ins. in ground, with top md.

	Y 30 N
	S 36
M	S 36
	N 4 W
	1958

from which

A maple, 4 ins. diam., bears S. 48 $\frac{1}{2}$  W., 19 $\frac{1}{2}$  lks. dist., md. S36 MC FT.  
A poplar, 10 ins. diam., bears N. 31' W., 53 lks. dist., md. T30N E4W S36 MC FT.

Meanders of Island

From M. C. on E. shore of island, thence with meanders of island, along a well-defined shore line, sloping to right; in sec. 25:

N. 28 $^{\circ}$ 15' E.,	1.60 chs.	N. 15 $^{\circ}$ 30' E.,	2.80 chs.
N. 18 $^{\circ}$ 45' E.,	2.80 chs.	S. 38 $^{\circ}$ 30' W.,	4.70 chs.
N. 74 $^{\circ}$ 45' W.,	3.40 chs.	S. 35 $^{\circ}$ 38' E.,	4.78 chs. to N.C.

of sec. 25 and 36, on W. shore.

Thence in sec. 36

S. 12 $^{\circ}$ 00' E.,	2.00 chs.	N. 77 $^{\circ}$ 15' E.,	1.10 chs.
S. 38 $^{\circ}$ 30' E.,	1.60 chs.	N. 23 $^{\circ}$ 45' E.,	3.14 chs. to N.C.

on E. shore and place of beginning.

General Description

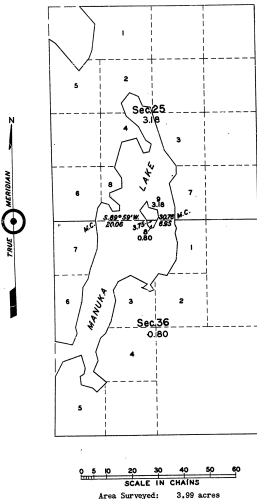
The island is of sandy loam formation and reaches approximately 5 ft. above the normal level of Manuka Lake.

The timber is birch, poplar, white pine and jack pine, ranging in size from 4 to 16 ins. diam.; there are several old stumps to 24 ins. diam., which have been cut many years.

There are no improvements on the island.

The formation of the island, similar to that of the mainland included in the original survey, and the timber growth thereon which is estimated to be well over 100 years of age, attests to the fact that it was in existence in 1837, when Michigan was admitted into the Union, and has been in continuous existence since that date, and therefore has the status of public land.

The island is well over 80% upland in character, in both sections.



I HEREBY CERTIFY UPON HONOR that, in pursuance of Special Instructions for Group 67, Michigan, bearing date of August 5, 1958, and Assignment Instructions dated August 5, 1958, I surveyed on September 4, 1959, the Island in Manuka Lake, secs. 25 and 36, T. 30 N., R. 4 W., Michigan Meridian, in the State of Michigan, which is represented by this diagram and field notes of survey, and that said survey has been made in strict conformity with said instructions, the Manual of Instructions for Survey of the Public Lands of the United States, and in the specific manner described in the notes of survey.

*Hugh B. Crawford*

June 19, 1960.

Hugh B. Crawford  
Cadastral Surveyor

UNITED STATES DEPARTMENT OF THE INTERIOR  
BUREAU OF LAND MANAGEMENT  
Washington, D.C. August 4, 1959

This plat is strictly conformable to the show field notes of survey, which have been critically examined and found correct, and are hereby approved, and the survey, having been properly executed in accordance with the requirements of law and the regulations of this Bureau, is hereby accepted.

For the Director

*Joseph W. Harrington*  
Cadastral Engineering Staff Officer

This plat represents the complete record of survey.

Diagram  
of  
Section 25  
T. 30 N. R. 4 W. MICH.



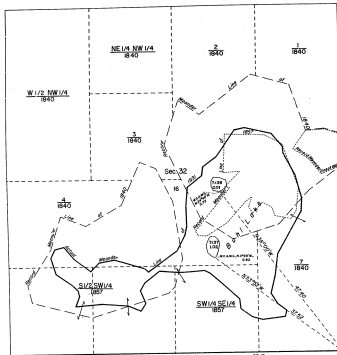
Department of the Interior  
Cassius Lake Office  
December 20, 1875.

I hereby certify that the above is a plat of the subdivisions made in accordance with Section 219 U.S. Revised Statutes of the South half of the South East fractional quarter and East half of the South West fractional quarter of Sec. 25 T. 30 N. 4 W. Range 4 West Michigan Meridian in the State of Michigan.

J. A. Williams  
Commissioner  
Ex-officio Surveyor General  
of Michigan.

Compd with Carl Eschmann  
April 4 1895 J. D. Barry Sec.

TOWNSHIP 30 NORTH, RANGE 4 WEST, OF THE MICHIGAN MERIDIAN, MICHIGAN.  
SURVEY OF ISLANDS



Scale: 1" = 200' (Horizontal)  
Scale: 1" = 100' (Vertical)



Area: 100 Acres

A history of surveys is contained in the field notes.

This plat represents the survey of two islands in Bush Lake, formerly known as Pencil Lake, T. 30 N., R. 4 W., Michigan Meridian, Michigan, which were omitted from previous surveys.

Except as indicated herein, the bearings and areas are as shown on the plat approved March 27, 1867, August 18, 1877, and the plat accepted February 14, 1933.

Survey executed by Gary L. Kratz, Cadastral Surveyor, beginning October 31, 1977, and completed November 1, 1977, pursuant to Special Instructions dated July 23, 1977, for Group No. 79 Michigan.

The patented subdivisions are shown in their proper position with designations referring to the plat on which the patents were based, the date of said plat being indicated below the designation.

UNITED STATES DEPARTMENT OF THE INTERIOR  
BUREAU OF LAND MANAGEMENT  
Denver, Colorado

This plat is strictly conformable to the approved field notes, and the survey, being here correctly recorded in accordance with the requirements of law and the regulations of this Bureau, is hereby accepted.

For the Director

*James S. Smith*  
Acting Chief, Cadastral Survey  
Bureaucratic and Approval Staff