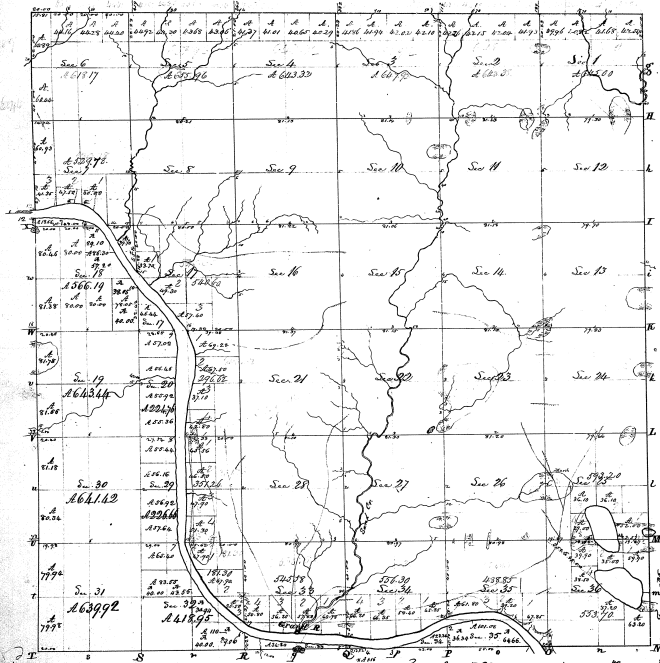


Township N. VII North, Range N. XIII, West Mer. (Mia. Ter.)



Total Acres, 3621.00

Scale as shown on sheet

Original Designation (by whom surveyed)	Date of Survey	No. of Acres	No. of Sections	When Surveyed	Amount of Money Paid for the Same
St. M. River	25th Apr 1832	112.0	1	1832	16, 04 7/8
Admission to the River	18th Oct 1836	16, 04 7/8	1	1836	3 3/4
Admission to the River	18th Oct 1836	63, 07, 3/4	1	1836	1 1/2

The above Map of Township N. VII of Range N. XIII W. of the Principal Meridian, Territory of the State of Iowa, is hereby confirmed, and the field notes of the survey thereof, on file in this office, which have been examined and approved.

Surveyor General's Office
Cincinnati, March 27th 1838.

M. T. Williams
Secy. G. S.

135

8-15

Sections of Township N. VII North, Range N. XIII, West Mer. (Mia. Ter.)		
Section	Acres	Remarks
1	3600	Original survey, see map
2	1800	Original survey, see map
3	2800	Original survey, see map
4	2800	Original survey, see map
5	1700	Original survey, see map
6	1300	Original survey, see map
7	700	Original survey, see map
8	1800	Original survey, see map
9	1800	Original survey, see map
10	1800	Original survey, see map
11	1800	Original survey, see map
12	1800	Original survey, see map
13	1800	Original survey, see map
14	1800	Original survey, see map
15	1800	Original survey, see map
16	1800	Original survey, see map
17	1800	Original survey, see map
18	1800	Original survey, see map
19	1800	Original survey, see map
20	1800	Original survey, see map
21	1800	Original survey, see map
22	1800	Original survey, see map
23	1800	Original survey, see map
24	1800	Original survey, see map
25	1800	Original survey, see map
26	1800	Original survey, see map
27	1800	Original survey, see map
28	1800	Original survey, see map
29	1800	Original survey, see map
30	1800	Original survey, see map
31	1800	Original survey, see map
32	1800	Original survey, see map
33	1800	Original survey, see map
34	1800	Original survey, see map
35	1800	Original survey, see map
36	1800	Original survey, see map

Abstract of General Acct.,
and of B. Sales.

Per	Balance	1828	1829	Balance	1830
	General Acct.	574 0	4 00		
	Balance on 1/1/28	574 0	4 00		
	1793 0	12 00	1793 0	7 00	
	1796 0	22 10	1796 0	11 50	
	1798 0	15 00			
	1799 0	15 00	1799 0	36	
	1800 0	28 00	1800 0	40 00	
	1801 0	20 00	1801 0	40 00	
	1802 0	2 00	1802 0	1 00	
	1803 0	4 00	1803 0	2 00	
	1804 0	12 00	1804 0	8 00	
	1805 0	12 00	1805 0	2 00	
	1806 0	12 00	1806 0	2 00	
	1807 0	12 00	1807 0	2 00	
	1808 0	12 00	1808 0	2 00	
	1809 0	12 00	1809 0	2 00	
	1810 0	12 00	1810 0	2 00	
	1811 0	12 00	1811 0	2 00	
	1812 0	12 00	1812 0	2 00	
	1813 0	12 00	1813 0	2 00	
	1814 0	12 00	1814 0	2 00	
	1815 0	12 00	1815 0	2 00	
	1816 0	12 00	1816 0	2 00	
	1817 0	12 00	1817 0	2 00	
	1818 0	12 00	1818 0	2 00	
	1819 0	12 00	1819 0	2 00	
	1820 0	12 00	1820 0	2 00	
	1821 0	12 00	1821 0	2 00	
	1822 0	12 00	1822 0	2 00	
	1823 0	12 00	1823 0	2 00	
	1824 0	12 00	1824 0	2 00	
	1825 0	12 00	1825 0	2 00	
	1826 0	12 00	1826 0	2 00	
	1827 0	12 00	1827 0	2 00	
	1828 0	12 00	1828 0	2 00	
	1829 0	12 00	1829 0	2 00	
	1830 0	12 00	1830 0	2 00	
	1831 0	12 00	1831 0	2 00	
	1832 0	12 00	1832 0	2 00	
	1833 0	12 00	1833 0	2 00	
	1834 0	12 00	1834 0	2 00	
	1835 0	12 00	1835 0	2 00	
	1836 0	12 00	1836 0	2 00	
	1837 0	12 00	1837 0	2 00	
	1838 0	12 00	1838 0	2 00	
	1839 0	12 00	1839 0	2 00	
	1840 0	12 00	1840 0	2 00	
	1841 0	12 00	1841 0	2 00	
	1842 0	12 00	1842 0	2 00	
	1843 0	12 00	1843 0	2 00	
	1844 0	12 00	1844 0	2 00	
	1845 0	12 00	1845 0	2 00	
	1846 0	12 00	1846 0	2 00	
	1847 0	12 00	1847 0	2 00	
	1848 0	12 00	1848 0	2 00	
	1849 0	12 00	1849 0	2 00	
	1850 0	12 00	1850 0	2 00	
	1851 0	12 00	1851 0	2 00	
	1852 0	12 00	1852 0	2 00	
	1853 0	12 00	1853 0	2 00	
	1854 0	12 00	1854 0	2 00	
	1855 0	12 00	1855 0	2 00	
	1856 0	12 00	1856 0	2 00	
	1857 0	12 00	1857 0	2 00	
	1858 0	12 00	1858 0	2 00	
	1859 0	12 00	1859 0	2 00	
	1860 0	12 00	1860 0	2 00	
	1861 0	12 00	1861 0	2 00	
	1862 0	12 00	1862 0	2 00	
	1863 0	12 00	1863 0	2 00	
	1864 0	12 00	1864 0	2 00	
	1865 0	12 00	1865 0	2 00	
	1866 0	12 00	1866 0	2 00	
	1867 0	12 00	1867 0	2 00	
	1868 0	12 00	1868 0	2 00	
	1869 0	12 00	1869 0	2 00	
	1870 0	12 00	1870 0	2 00	
	1871 0	12 00	1871 0	2 00	
	1872 0	12 00	1872 0	2 00	
	1873 0	12 00	1873 0	2 00	
	1874 0	12 00	1874 0	2 00	
	1875 0	12 00	1875 0	2 00	
	1876 0	12 00	1876 0	2 00	
	1877 0	12 00	1877 0	2 00	
	1878 0	12 00	1878 0	2 00	
	1879 0	12 00	1879 0	2 00	
	1880 0	12 00	1880 0	2 00	
	1881 0	12 00	1881 0	2 00	
	1882 0	12 00	1882 0	2 00	
	1883 0	12 00	1883 0	2 00	
	1884 0	12 00	1884 0	2 00	
	1885 0	12 00	1885 0	2 00	
	1886 0	12 00	1886 0	2 00	
	1887 0	12 00	1887 0	2 00	
	1888 0	12 00	1888 0	2 00	
	1889 0	12 00	1889 0	2 00	
	1890 0	12 00	1890 0	2 00	
	1891 0	12 00	1891 0	2 00	
	1892 0	12 00	1892 0	2 00	
	1893 0	12 00	1893 0	2 00	
	1894 0	12 00	1894 0	2 00	
	1895 0	12 00	1895 0	2 00	
	1896 0	12 00	1896 0	2 00	
	1897 0	12 00	1897 0	2 00	
	1898 0	12 00	1898 0	2 00	
	1899 0	12 00	1899 0	2 00	
	1900 0	12 00	1900 0	2 00	

813