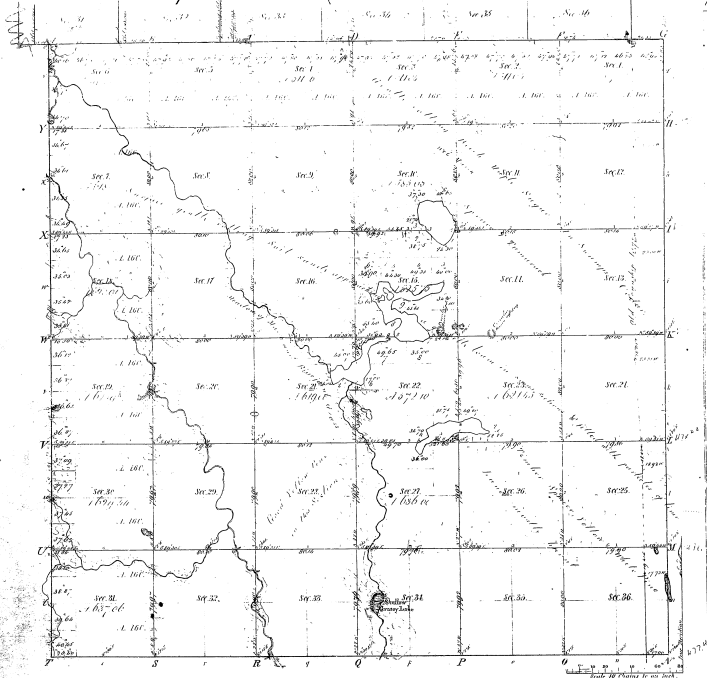


Township 17 33.1 Range 17 24.1 Men. Michigan



Meander's in
Public Lands in 1840 Public Lands in 1840 Public Lands in 1840

20-11
20-11

C. C. C. C.

Total number of Acres 21,805.04

Survey Designated	By Whom Surveyed	Date of Finish	Amount of Acres	When Surveyed	Amount of Acres
Public Lands	W. M. C. C. C.	Sept. 6, 1851	21,805.04	1851	21,805.04
Subdivision	Geo. M. C. C.	Sept. 6, 1851	65 57 22	5-20 Oct. 1851	65 57 22
Local Boundary	Geo. M. C. C.		5 61 23	5-20 Oct. 1851	5 61 23

The above copy of Township 17 33.1 Range 17 24.1 of the
Michigan Meridian is a copy of the original
of the survey thereon in the office, and has been examined and approved.

Surveyor General's Office,
District of Michigan, 1851
Marion S. C. C.