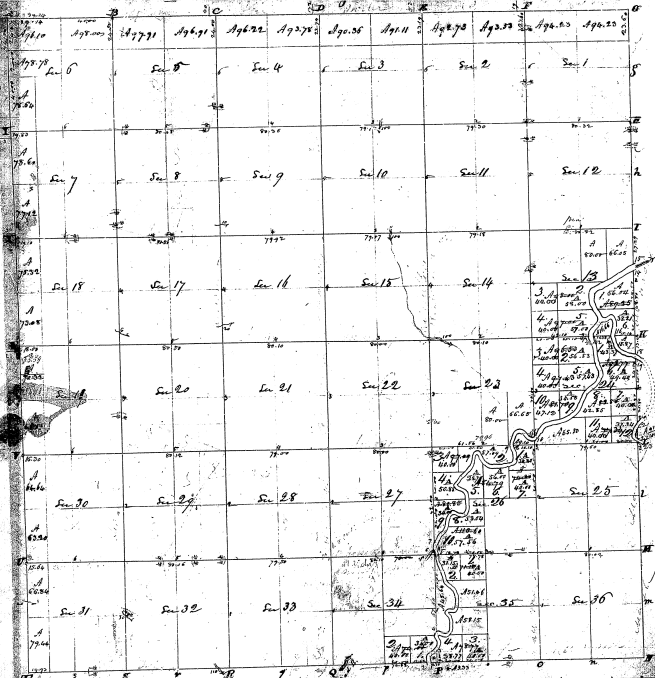


Township N. 21 North, Range N. 2 East Mer. (S. 70m)

21



Plat of Section 33, 012, 21 North, Range N. 2 East Mer. (S. 70m)

Placed to a lot east with and situated from Charles' Office, Chicago, Ill., during the day of  
 I have examined the plat and certify that it is correct and that it is well known to  
 be true and correct and that I am a competent person to do so and that I am a  
 with the State and that I am a competent person to do so and that I am a

23-11  
 23-11