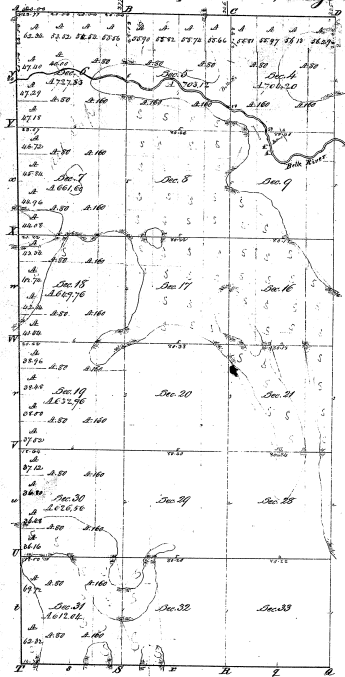


Township N: 6 N, Range N: 18 East Mer. (Mich.)



26-21

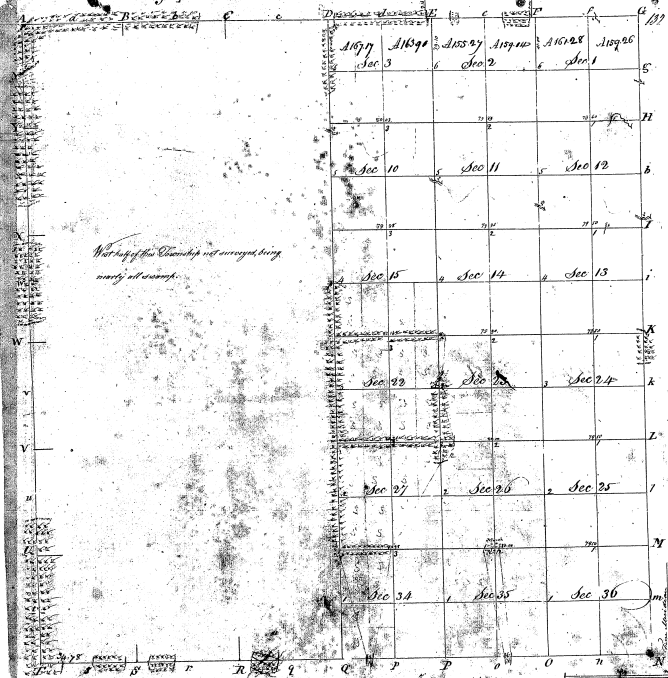
26-21 (2)

Long Surveyed by Wm. Henry Rice of Central Dist. of Survey this day in the year 1857  
 Town Survey  
 Subscribers W. H. Hunt August 27. 18. 58 5 1/2 1858 5 1/2 1858

This shows Map of Township N. 6 N. of Range N. 18 E. of the Principal Meridian Michigan is truly conformable to the field notes of the Survey though on file in this office, which has been examined and approved by the Surveyor General's Office  
 Wm. H. Hunt  
 Surveyor General's Office  
 Lansing Michigan 22. 1857

Surveyed by Wm. H. Hunt  
 June 27. 1858

Township N. 21 North, Range N. 12 East, (Mich. Ter.)



Not all of this Township is surveyed, being nearly all swamp.

In No. 11-2189-  
 Pursuant to a contract with and Instructions from Edward Tiffin Esq. Surveyor General of the United States bearing date the twentieth day of November 1816 I have advertisement laid out and Surveyed the above described Township; and do certify that it had paid, marks and bounds both natural and artificial as are represented to said Plat, and described in the field notes made thereof, and returned with the Plat into the Surveyor General's Office: Certified this 25th day of Sept 1817  
 William Beaman

26-21

26-21 (2)