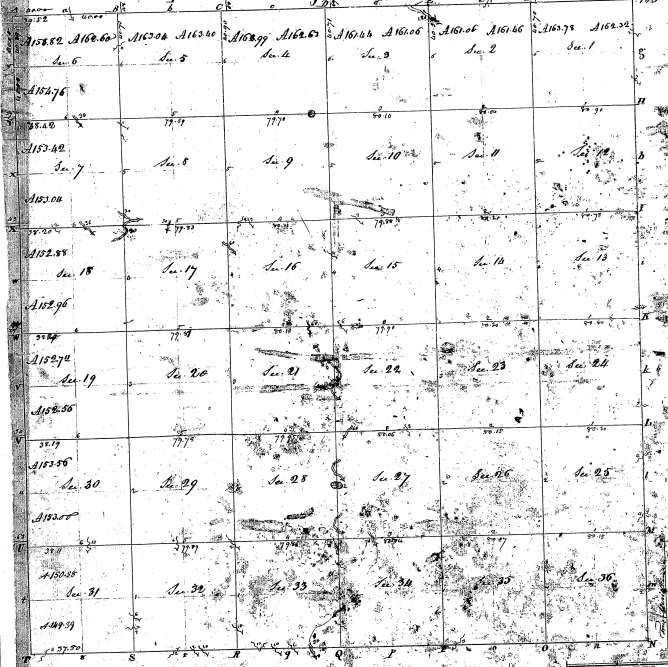


Township N<sup>o</sup> VI North, Range N<sup>o</sup> XVI East of Mer. (Mich. Ter.)



26-24

26-24

Pursuant to a contract, with and Instructions, from Edward Tiffin Esquire, Surveyor General of the Michigan State, bearing date the twentieth day of November 1816, These administrators laid out and surveyed the above described Township, and do certify that it had such marks and bounds both natural and artificial as are represented on said Plat, and described in the field, was made thereof and returned with this Plat, unto the Surveyor General's Office, on the 25th day of Sept. 1817.

William D. Weston, Esq.