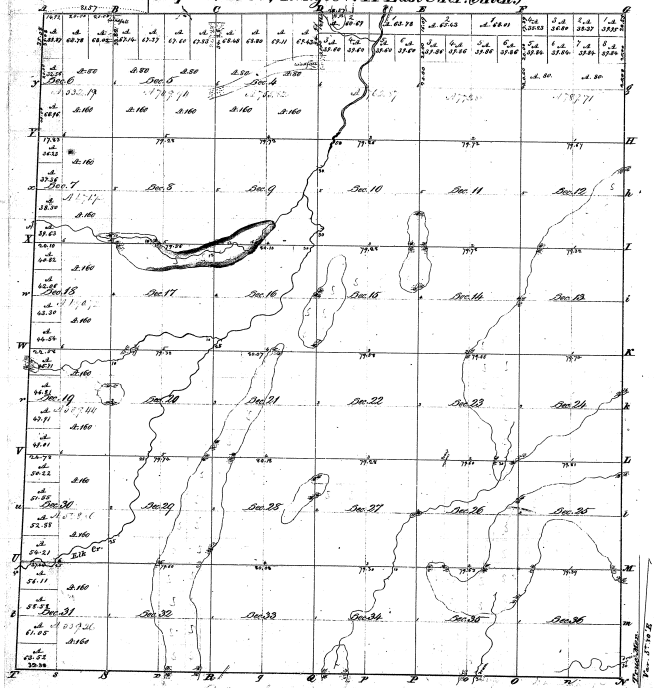


Township N. 10 N., Range N. 11 East, Mer. (Mich.)

26-2  
26-2



Area survey of 52923.44

Original Survey	Original Survey	Subj. to this Survey	Subj. to this Survey
1837	1837	1837	1837
1838	1838	1838	1838
1839	1839	1839	1839
1840	1840	1840	1840
1841	1841	1841	1841
1842	1842	1842	1842
1843	1843	1843	1843
1844	1844	1844	1844
1845	1845	1845	1845
1846	1846	1846	1846
1847	1847	1847	1847
1848	1848	1848	1848
1849	1849	1849	1849
1850	1850	1850	1850
1851	1851	1851	1851
1852	1852	1852	1852
1853	1853	1853	1853
1854	1854	1854	1854
1855	1855	1855	1855
1856	1856	1856	1856
1857	1857	1857	1857
1858	1858	1858	1858
1859	1859	1859	1859
1860	1860	1860	1860
1861	1861	1861	1861
1862	1862	1862	1862
1863	1863	1863	1863
1864	1864	1864	1864
1865	1865	1865	1865
1866	1866	1866	1866
1867	1867	1867	1867
1868	1868	1868	1868
1869	1869	1869	1869
1870	1870	1870	1870
1871	1871	1871	1871
1872	1872	1872	1872
1873	1873	1873	1873
1874	1874	1874	1874
1875	1875	1875	1875
1876	1876	1876	1876
1877	1877	1877	1877
1878	1878	1878	1878
1879	1879	1879	1879
1880	1880	1880	1880
1881	1881	1881	1881
1882	1882	1882	1882
1883	1883	1883	1883
1884	1884	1884	1884
1885	1885	1885	1885
1886	1886	1886	1886
1887	1887	1887	1887
1888	1888	1888	1888
1889	1889	1889	1889
1890	1890	1890	1890
1891	1891	1891	1891
1892	1892	1892	1892
1893	1893	1893	1893
1894	1894	1894	1894
1895	1895	1895	1895
1896	1896	1896	1896
1897	1897	1897	1897
1898	1898	1898	1898
1899	1899	1899	1899
1900	1900	1900	1900

The above Map of Township N. 10 North of Range N. 11 East of the Meridian, Michigan Territory is hereby confirmed to the full title of the Survey made thereon by the Surveyor General of Michigan, which has been examined & approved.  
 Surveyor General's Office  
 Detroit, Mich. 20. 1855  
 W. T. Williams  
 Surveyor General